



Air Prep



Lockout Valve Series

We're everywhere you need us to be!



Lockout Series	3-7
Features and Benefits	3
Manual Lockout Valves	4
Slo-Start Lockout Valves	5
High Flow Lockout Valves	6
Modular Lockout Valves	7



Numatics Lockout Valves



Lockout valves prevent unauthorized pressurization of an air system during service or maintenance. Numatics lockout valves employ a unique, one piece center spool design that accommodates a user-supplied padlock in the closed position. When locked in the closed position, the system controlled by the lockout valve cannot be operated until the padlock is removed.

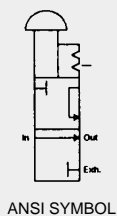
Numatics lockout valves are available in several different designs, including manual, Slo-Start™, and Modular. Each lockout valve is equipped with an emergency shut-off feature that quickly exhausts all downstream air to atmosphere. An additional feature of the Slo-Start™ valves is their capability to gradually build up downstream pressure before opening to full flow conditions.

Features of Numatics lockout Valves

- Emergency shutoff
- Quick exhaust of downstream pressure
- Meets OSHA specifications
- Integrated hole for tradesman lock
- Sturdy construction
- Durable and long lasting
- Standardized bright yellow body with a red knob is easily identified as a lockout device
- Slo-Start™ feature prolongs life of downstream pneumatic components



Lockout Valve Series



Manual Lockout Valves VL30/VL40 Series

- High exhaust capability
- Detented spool
- Low-friction startup
- Meets OSHA specifications
- Surface mountable

Specifications

Temperature Range: 40°F to 120° F (4.4° C to 46.9° C)

Maximum Pressure: 150 PSIG (10 bar)

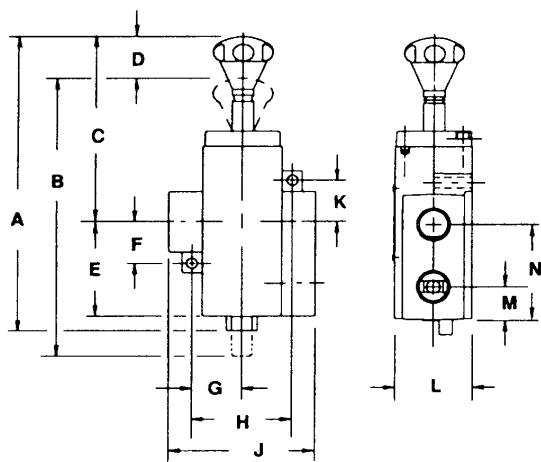
Flow Media: filtered air

Weight: VL30 Series 2.1 lbs (.95 kg)

VL40 Series 4.4 lbs (2 kg)

Cv Ratings

MODEL NUMBER	Cv IN-OUT	Cv OUT-EXH
VL30N03Y	4.8	3.7
VL30N04Y	6.8	5.2
VL30N06Y	8.5	7.5
VL40N06Y	13.5	11.0
VL40N08Y	18.2	14.9
VL40N10Y	19.1	14.9
VL40N12Y	20.3	16.3



Mounting Dimensions

top dimensions = inches
bottom dimensions (in parenthesis) = millimeters

MODEL NUMBER	A	B	C	D	E	F	G
VL30	8.04 (204.2)	7.54 (191.5)	5.16 (131)	0.96 (24.4)	2.38 (60.5)	1.12 (28.6)	1.31 (33.3)
VL40	9.75 (247.7)	9.27 (235.5)	6.12 (155.4)	1.30 (33)	3.13 (79.5)	1.50 (38.1)	1.62 (41.3)

MODEL NUMBER	H	J	K	L	M	N
VL30	2.62 (66.6)	3.76 (95.5)	1.12 (28.6)	2.00 (50.8)	0.75 (19)	2.38 (60.5)
VL40	3.25 (82.6)	4.76 (120.9)	1.50 (38.1)	2.50 (63.5)	1.09 (27.7)	3.13 (79.5)

How To Order

V L 30 N 03 Y

Threads

N = NPTF
G = G Tap (BSPP)

Port Size

03 = 3/8 in/out, 3/8 exh.
04 = 1/2 in/out, 1/2 exh.
06 = 3/4 in/out, 3/4 exh.

Options

A = Metal Muffler (i.e. VL30N03AY)
B = Scissor Lockout (i.e. VL30N03BY)

V L 40 N 06 Y

Threads

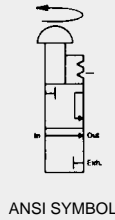
N = NPTF
G = G Tap (BSPP)

Port Size

06 = 3/4 in/out, 3/4 exh.
08 = 1 in/out, 1 exh.
10 = 1 1/4 in/out, 1 exh.
12 = 1 1/2 in/out, 1 exh.

Options

A = Metal Muffler (i.e. VL40N08AY)
B = Scissor Lockout (i.e. VL40N08BY)



Slo-Start™ Lockout Valves VT30/VT40 Series

- Slow start-up
- High exhaust capability
- Detented spool
- Low-friction seals
- Meets OSHA specifications
- Surface mountable

Specifications

Temperature Range: 40°F to 120° F (4.4° C to 46.9° C)

Maximum Pressure: 150 PSIG (10 bar)

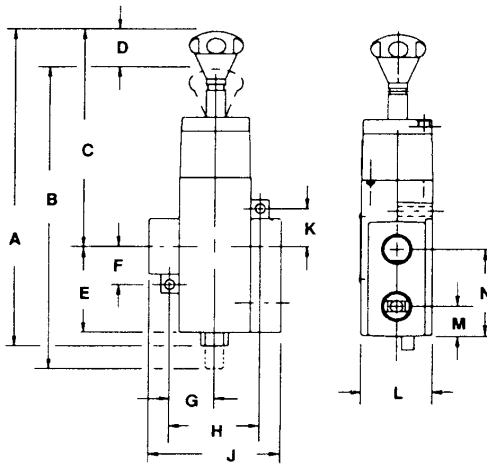
Flow Media: filtered air

Weight: VT30 Series 2.5 lbs (1.13 kg)

VT40 Series 5.0 lbs (2.27 kg)

Cv Ratings

MODEL NUMBER	Cv IN-OUT	Cv OUT-EXH
VT30N03Y	4.8	3.7
VT30N04Y	6.8	5.2
VT30N06Y	8.5	7.5
VT40N06Y	13.5	11.0
VT40N08Y	18.2	14.9
VT40N10Y	19.1	14.9
VT40N12Y	20.3	16.3



Mounting Dimensions

top dimensions = inches

bottom dimensions (in parenthesis) = millimeters

MODEL NUMBER	A	B	C	D	E	F	G
VT30	9.36 (237.7)	8.86 (225)	6.48 (164.6)	0.96 (24.3)	2.38 (60.5)	1.12 (28.6)	1.31 (33.3)
VT40	11.45 (290.8)	10.97 (278.6)	7.82 (198.6)	1.30 (33)	3.13 (79.5)	1.50 (38.1)	1.62 (41.3)

MODEL NUMBER	H	J	K	L	M	N
VT30	2.62 (66.6)	3.76 (95.5)	1.12 (28.6)	2.00 (50.8)	0.75 (19)	2.38 (60.5)
VT40	3.25 (82.6)	4.76 (120.9)	1.50 (38.1)	2.50 (63.5)	1.09 (27.7)	3.13 (79.5)

How To Order

V T 30 N 03 Y

Threads

N = NPTF

G = G Tap (BSPP)

Port Size

03 = 3/8 in/out, 3/8 exh.

04 = 1/2 in/out, 1/2 exh.

06 = 3/4 in/out, 3/4 exh.

Options

A = Metal Muffler (i.e. VT30N03AY)

B = Scissor Lockout (i.e. VT30N03BY)

V T 40 N 06 Y

Threads

N = NPTF

G = G Tap (BSPP)

Port Size

06 = 3/4 in/out, 3/4 exh.

08 = 1 in/out, 1 exh.

10 = 1 1/4 in/out, 1 exh.

12 = 1 1/2 in/out, 1 exh.

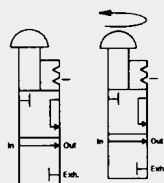
Options

A = Metal Muffler (i.e. VT40N08AY)

B = Scissor Lockout (i.e. VT40N08BY)



Lockout Valve Series



ANSI SYMBOL

High Flow Lockout Valves VL52/VT52 Series

- High flow
- High exhaust capability
- Detented spool
- Low-friction startup
- Meets OSHA specifications
- Surface mountable

Specifications

Temperature Range: 40°F to 120° F (4.4° C to 46.9° C)

Maximum Pressure: 150 PSIG (10 bar)

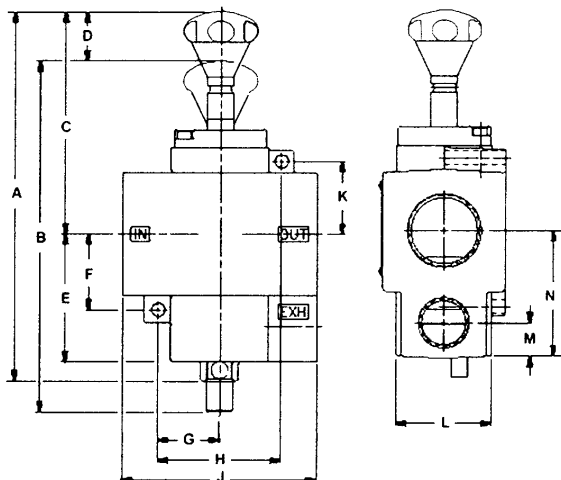
Flow Media: filtered air

Weight: VL52 Series 4.125 lbs (1.87 kg)

VT52 Series 5.5 lbs (2.5 kg)

Cv Ratings

MODEL NUMBER	Cv IN-OUT	Cv OUT-EXH
VL52N12Y	24	16
VL52N16Y	24	16
VT52N12Y	24	16
VT52N16Y	24	16



Mounting Dimensions

top dimensions = inches

bottom dimensions (in parenthesis) = millimeters

MODEL NUMBER	A	B	C	D	E	F	G
VL52	9.77 (248.2)	9.27 (235.5)	5.90 (149.9)	1.32 (33.5)	3.38 (85.9)	2.00 (50.8)	1.63 (41.4)
VT52	11.47 (291.3)	10.97 (278.6)	7.59 (192.8)	1.32 (33.5)	3.38 (85.9)	2.00 (50.8)	1.63 (41.4)

MODEL NUMBER	H	J	K	L	M	N
VL52	3.24 (82.3)	5.13 (130.3)	1.92 (48.8)	2.50 (63.5)	0.88 (22.4)	3.31 (84.1)
VT52	3.24 (82.3)	5.13 (130.3)	1.92 (48.8)	2.50 (63.5)	0.88 (22.4)	3.31 (84.1)

How To Order

V L 52 N 12 Y

Model

L = Standard

T = Slo-Start™ Feature

Threads

N = NPTF

G = G Tap (BSPP)

Port Size

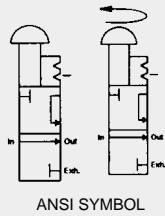
12 = 1 1/2"

16 = 2"

Options

A = Metal Muffler (i.e. VL52N12AY)

B = Scissor Lockout (i.e. VL52N12BY)



Modular Lockout Valves MVL30/MVT30 Series

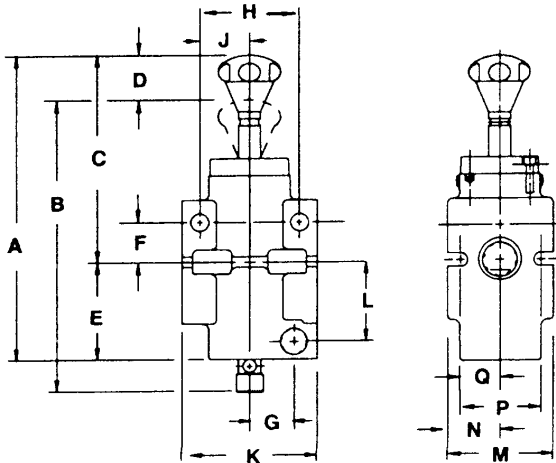
- High exhaust capability
- Detented spool
- Low-friction startup
- Meets OSHA specifications
- Modular adaptable to Numatics FLEXIBLOK® 32 3/4 Series

Specifications

Temperature Range: 40°F to 120° F (4.4° C to 46.9° C)
 Maximum Pressure: 150 PSIG (10 bar)
 Flow Media: filtered air
 Weight: MVL30 Series 2.1 lbs (.95 kg)
 MVT30 Series 4.4 lbs (2 kg)

Cv Ratings

MODEL NUMBER	Cv IN-OUT	Cv OUT-EXH
MVL30N06Y	6.0	5.0
MVT30N06Y	6.0	5.0



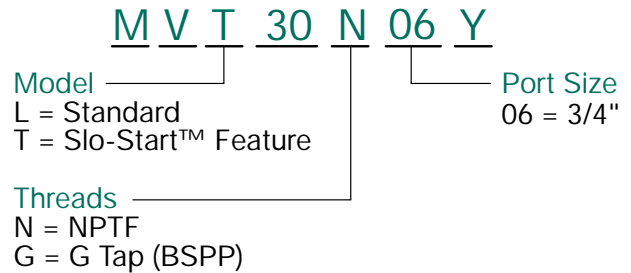
Mounting Dimensions

top dimensions = inches
 bottom dimensions (in parenthesis) = millimeters

MODEL NUMBER	A	B	C	D	E	F	G	H
MVL30	7.54 (191.5)	7.54 (191.5)	5.16 (131)	0.96 (24.3)	2.38 (60.5)	0.85 (21.6)	1.06 (26.9)	2.50 (63.5)
MVT30	8.86 (225)	8.86 (225)	6.48 (164.6)	0.96 (24.3)	2.38 (60.5)	0.85 (21.6)	1.06 (26.9)	2.50 (63.5)

MODEL NUMBER	J	K	L	M	N	P	Q
MVL30	1.25 (31.8)	3.20 (81.3)	1.86 (47.2)	2.68 (68)	1.34 (34)	2.00 (50.8)	1.00 (25.4)
MVT30	1.25 (31.8)	3.20 (81.3)	1.86 (47.2)	2.68 (68)	1.34 (34)	2.00 (50.8)	1.00 (25.4)

How To Order



Options

- A = Metal Muffler (i.e. MVL30N06AY)
- B = Scissor Lockout (i.e. MVT30N06BY)

Repair Kits

Lockout Valves

► Lockout Valve O-Ring Replacement Kits

includes 1 o-ring (3 needed for each lockout)

kit#	description
126-323	for VL30 and VT30 Series
126-324	for VL40 and VT40 Series
126-323	for MVL30 Series
126-324	for VL52 and VT52 Series

Each kit contains one o-ring, however, a lockout valve contains 3 o-rings total.
 To replace all o-rings in a lockout, 3 kits are needed.



numatics®

World Class Supplier of Pneumatic Components



World Headquarters

Numatics Incorporated

Phone: 248-887-4111

Fax: 248-887-9190

Numatics – Air Preparation

Phone: 810-667-3900

Fax: 810-667-3902

Numatics – Valves

Phone: 248-887-4111

Fax: 248-887-9190

Numatics – Miniature Valves

Phone: 248-960-1400

Fax: 248-960-2160

Numatics – Cylinders

Phone: 615-771-1200

Fax: 615-771-1201

Numatics – Rodless Cylinders

Phone: 519-452-1777

Fax: 519-452-3995

Numatics – Automation

Phone: 440-934-3200

Fax: 440-934-2288

CANADA

Ontario

Numatics, Ltd.

Phone: 519-452-1777

Fax: 519-452-3995

Quebec

Numatics, Ltd.

Phone: 514-332-6444

Fax: 514-332-9273

British Columbia

Numatics, Ltd.

Phone: 604-574-0401

Fax: 604-574-3713

EUROPE

Germany – European Headquarters

Numatics GmbH

Phone: 011-49-22 41-31 60-0

Fax: 011-49-22 41-31 60 40

Hungary

Numatics Kft.

Phone: 011-36-13 82 21 35

Fax: 011-36-12 04 39 47

England

Numatics Limited

Phone: 011-44-1525-37 07 35

Fax: 011-44-1525-38 25 67

France

Numatics s.a.r.l.

Phone: 011-33-1 41 21 48 88

Fax: 011-33-1 41 21 48 89

Italy

Numatics srl

Phone: 011-39-030-373 19 99

Fax: 011-39-030-373 19 81

Netherlands

Numatics B.V.

Phone: 011-31-418-65 29 50

Fax: 011-31-418-65 29 43

Spain

Numatics Spain S.L.

Phone: 011-34-93-221 21 96

Fax: 011-34-93-221 35 14

AFRICA

South Africa

Numatics SA (Pty) Ltd.

Phone: 011-27-11-8 65 44 52

Fax: 011-27-11-8 65 42 90

LATIN & SOUTH AMERICA

Mexico

Numatics de Mexico S.A. de C.V.

Phone: 011-52-222-284 6176

Fax: 011-52-222-284 6179

Brazil

Valvair Comercial Ltda.

Phone: 011-55-12-351 2874

Fax: 011-55-12-351 1958

ASIA & PACIFIC

Australia

Numatics Australia Pty. Ltd.

Phone: 011-61-3-95 63 86 00

Fax: 011-61-3-95 63 85 11

Taiwan – Asian Headquarters

Numatics Co, Ltd. Asia

Phone: 011-886-2-29 15 16 05

Fax: 011-886-2-29 14 18 97

For a comprehensive listing of all Numatics production and distribution facilities worldwide, visit www.numatics.com