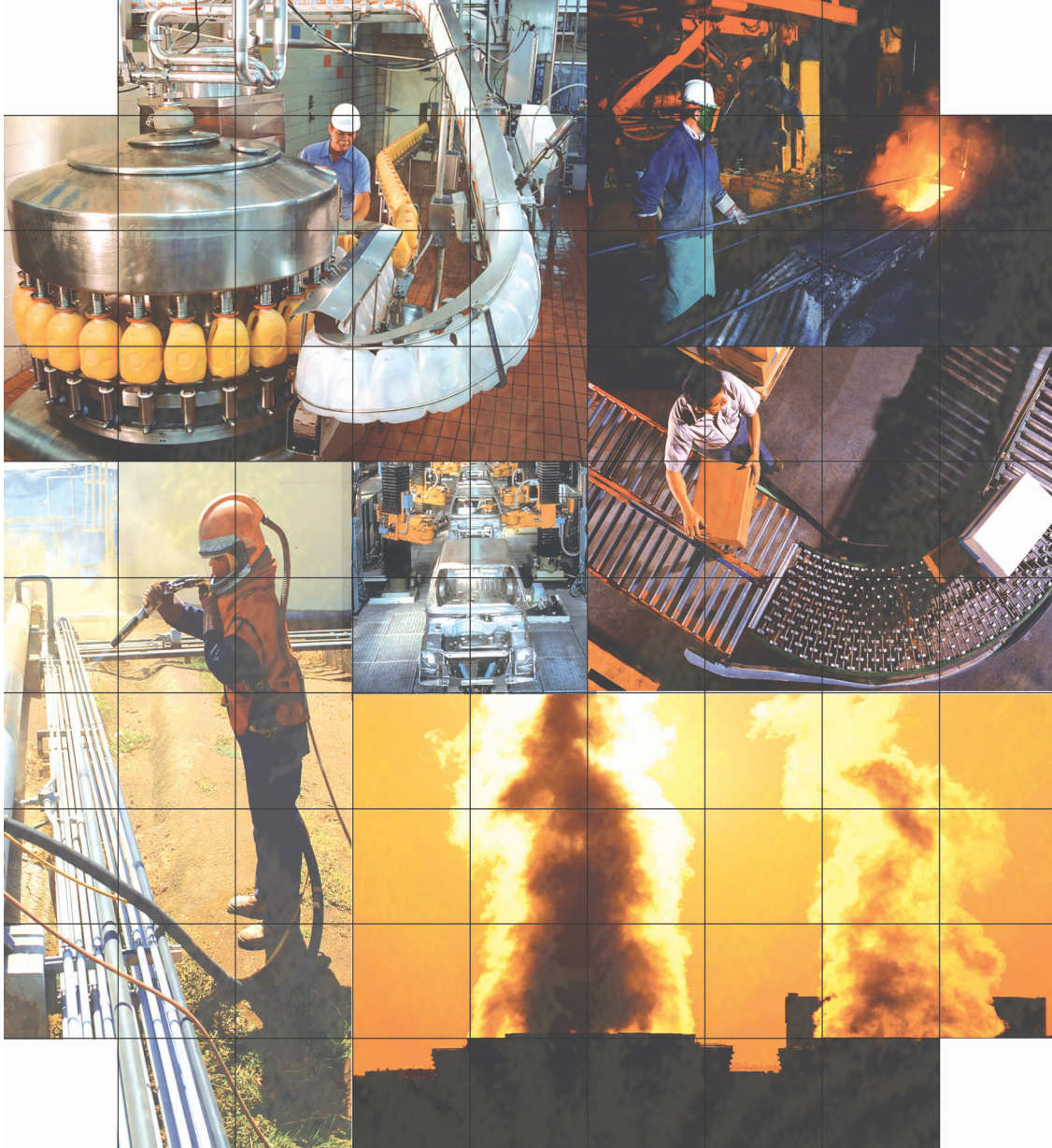


ASCO[®] Valve



Valves for the control of air, water and steam

www.ascovalve.net

SOLENOID VALVES

GENERAL PURPOSE APPLICATIONS

1/8" - 2"

TECHNICAL DATA

- **Fluids** : water, air & neutral gas; light oil < 40 cSt
- **Body** : Brass
- **Sealing** : NBR (steam: PTFE)
- **Maximum temperature**
 - Ambient** : +60 °C
 - Fluid** : +85 °C (106 Series : +80 °C)
- **Protection** : IP65
- **Standard voltage DC (=)** : 24V
- **Standard voltage AC (~)** : 110V / 50-60 Hz
220V / 50-60 Hz
230V / 50 Hz
Other voltages available upon request
- **Steam** : + 80 °C
+ 170 °C

106 series



240 series



238 series



SPECIFICATIONS

pipe size G	orifice size (mm)	flow coef Kv (l/min)	operating pressure differential (bar)			power rating		catalog number
			min	maximum		AC (W)	DC (W)	
				air / gas / water / light oil	AC			

2 WAY NORMALLY CLOSED

1/8"	1.5	1	0	20	12	4	6.9	10600058
1/8"	2.5	1.7	0	10	4	4	6.9	10600003
1/4"	1.5	1.1	0	20	12	4	6.9	10600187
1/4"	2.5	2.9	0	10	4	4	6.9	10600189
3/8"	12	40	0.3	10	10	4	6.9	SCE238A001
3/8"	12	40	0.3	16	16	5	6.9	SCE238A006
3/8"	12.5	35	0	10	10	6	15.3	SCG238A044
1/2"	12	40	0.3	10	10	4	6.9	SCE238A002
1/2"	12	40	0.3	16	16	5	6.9	SCE238A007
1/2"	15	70	0.3	10	10	4	6.9	SCE238B003
1/2"	15	70	0.3	16	16	5	6.9	SCE238B008
1/2"	12.5	35	0	10	10	6	15.3	SCG238A046
3/4"	20	110	0.3	10	10	4	6.9	SCE238A004
3/4"	20	110	0.3	16	16	5	6.9	SCE238A009
3/4"	19	75	0	10	10	6	15.3	SCG238A048
1"	25	165	0.3	10	10	4	6.9	SCE238A005
1"	25	165	0.3	16	16	5	6.9	SCE238A010
1"	25	166	0	10	10	9	15.3	SCG238A050
1 1/4"	30	250	0.5	10	10	8	9.0	SCG238C016
1 1/2"	45	450	0.5	10	10	8	9.0	SCG238C017
2"	45	566	0.5	10	10	8	9.0	SCG238C018

2 WAY NORMALLY OPENED

3/8"	11.5	28	0.35	12	12	6	6.0	SCG238S414
1/2"	11.5	35	0.35	12	12	6	6.0	SCG238S415
3/4"	18	83	0.35	12	12	6	6.0	SCG238S416
1"	24	183	0.35	12	12	6	6.0	SCG238S417
1 1/4"	30	250	0.5	10	10	8	9.0	SCG238C019
1 1/2"	45	450	0.5	10	10	8	9.0	SCG238C020
2"	45	566	0.5	10	10	8	9.0	SCG238C021

2 WAY NORMALLY CLOSED - STEAM / SUPERHEATED WATER

3/8"	10	33	0.4	8	-	6	-	SCG240A100
1/2"	10	42	0.4	8	-	6	-	SCG240A101
3/4"	16	75	0.4	8	-	6	-	SCG240A102
1"	18.5	142	0.4	8	-	6	-	SCG240A103

Note: Manual Operator, Viton and EPDM can be supplied

Conversion: Cv = 0.069kv (l/min)

bar = 100kpa = 14.5psi

°F = 9/5 °C + 32

Viscosity: 40cSt = 186SSU

PRESSURE OPERATED VALVES

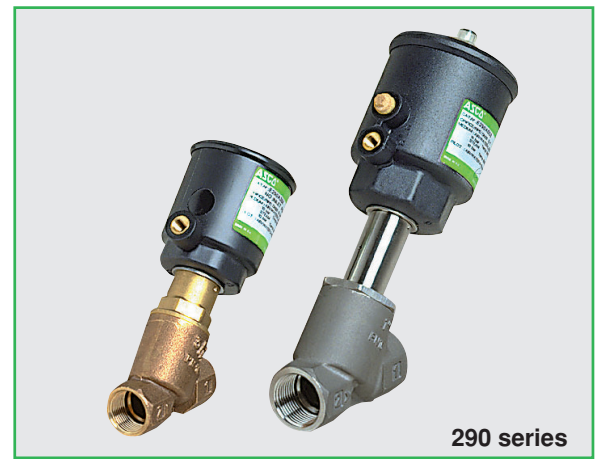
MULTI PURPOSE APPLICATIONS

external pilot operated

3/8" - 2 1/2"

TECHNICAL DATA

- **Fluids** : air, neutral gas, water, light oil, superheated water, steam (bronze series)
aggressive fluids (stainless steel series)
- **Temperature range**
 - Fluid** : - 10°C to + 184°C
 - Ambient** : - 10°C to + 60°C
- **Body** : Bronze / Stainless steel 316L
- **Stuffing box and disc seal** : PTFE



290 series

SPECIFICATIONS

pipe size G	orifice size (mm)	flow coef Kv (l/min)	pilot pressure (bar)		operating pressure differential (bar)			dimensions / weight ref.	catalog number for valve only		
			min ⁽¹⁾	max	min.	maximum			bronze body	stainless steel body	
						air, gases, aggressive fluids	water, oil, superheated water, aggressive fluids				steam (184°C)
2 WAY NORMALLY CLOSED - Entry under disc (anti-water hammering)											
3/8"	10	33	4	10	0	16	16	10	1	--	E290A791
1/2"	15	82	4	10	0	16	16	10	2	E290A384	E290A393
1/2"	15	58	4	10	0	12	12	10	3	--	E290A792
3/4"	20	157	4	10	0	10	10	10	4	E290A385	E290A394
3/4"	20	108	4	10	0	6	6	6	5	--	E290A793
1"	25	275	4	10	0	10	10	10	6	E290B010	E290B053
1 1/4"	32	450	4	10	0	12	12	10	7	E290A017	E290A060
1 1/2"	40	750	4	10	0	8	8	8	8	E290A021	E290A064
2"	50	1110	4	10	0	10	10	10	9	E290A485	E290A498
2 1/2"	65	1850	4	10	0	6	6	6	10	E290A488	E290A501
2 WAY NORMALLY CLOSED - Entry above disc											
3/8"	10	33	4	10	0	10	-	10	1	--	E290A797
1/2"	15	82	3.5	10	0	10	-	10	2	E290A390	E290A399
1/2"	15	58	4	10	0	10	-	10	3	--	E290A798
3/4"	20	157	4	10	0	10	-	10	4	E290A391	E290A400
3/4"	20	108	4	10	0	6	-	6	5	--	E290A799
1"	25	213	5	10	0	10	-	10	11	E290A392	E290A401
1 1/4"	32	450	5	10	0	10	-	10	12	E290A039	E290A082
1 1/2"	40	750	7	10	0	10	-	10	13	E290A040	E290A083
2"	50	983	10	10	0	10	-	10	14	E290A043	E290A086
2 1/2"	65	1567	10	10	0	10	-	10	15	E290A623	E290A625

(1) Minimum pilot pressure required to achieve 10 bar main line pressure or maximum rated pressure of valve (if rated under 10 bar). Lower minimum pilot pressures are possible if valve is being used at less than its maximum rating.

PILOT VALVES

direct operated

1/8" - 1/4"

TECHNICAL DATA

- **Standard voltage DC (=)** : 24V
- AC (~)** : 110V / 50-60 Hz
220V / 50-60 Hz
230V / 50 Hz
Other voltages available upon request
- **Protection** : IP65

SPECIFICATIONS

pipe size G	orifice size (mm)	flow coef Kv (l/min)	operating pressure differential (bar)			power rating		catalog number
			min	maximum		AC (W)	DC (W)	
				air / gas / water / oil	AC			
3 WAY NORMALLY CLOSED								
1/8"	1	0.5	0	15	15	4	6.9	10700001
1/4"	1.5	1	0	12	12	5	6.9	10700207

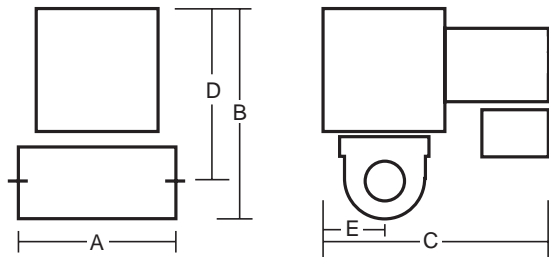


107 series

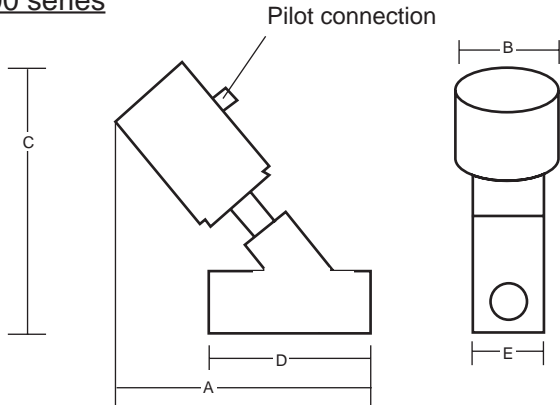


DIMENSIONS (mm), WEIGHT (kg)

238 / 106 / 240 / 107 series



290 series



ASCO VALVE - ASIA / PACIFIC

Australia

Tel: (61-2) 9451 7077 Fax: (61-2) 9451 9924
Email: sales@asco.com.au

China

Beijing

Tel: (86-10) 8563 1122 Fax: (86-10) 8561 5224
Email: asco.beijing@ascovalve.net

Chengdu

Tel: (86-28) 8662 8833 Fax: (86-28) 8662 5854
Email: asco.chengdu@ascovalve.net

Guangzhou

Tel: (86-20) 3877 1766 Fax: (86-20) 8761 6507
Email: asco.guangzhou@ascovalve.net

Shanghai

Tel: (86-21) 6391 2588 Fax: (86-21) 6391 2319
Email: asco.shanghai@ascovalve.net

Hong Kong

Tel: (852) 2343 8580 Fax: (852) 2790 1771
Email: asco.hongkong@ascovalve.net

Indonesia

Tel: (62-21) 750 7800 Fax: (62-21) 750 7899
Email: valvesales@ascovalve.net

Malaysia

Tel: (60-3) 8023 0680 Fax: (60-3) 8023 0681
Email: valvesales@ascovalve.net

New Zealand

Tel: (64-9) 478 0192 Fax: (64-9) 478 0193
Email: nzsales@asco.com.au

Singapore

Tel: (65) 6556 1100 Fax: (65) 6556 0011
Email: valvesales@ascovalve.net

catalog number	A	B	C	D	E	weight (kg)
238 series A001, A002 A006, A007	62	82	43	68.5	21.5	0.4 0.5
B003 B008	81.5	84.5	57	71	28.5	0.5 0.6
A004 A009	95	95.5	68	79.5	34	0.8 0.9
A005 A010	105.5	105	87	84.5	43.5	1.0 1.1
C016 C017 C018 C019 C020 C021	113 140 157 113 140 157	133 140 151 151 158 169	81 110 110 81 110 110	107 110 115 125 128 133	40.5 55 55 40.5 55 55	1.7 2.6 3.1 1.9 3.0 3.4
A044 A046 A048 A050	52 52 67 86	85 85 92 112	81 81 92 99	72 72 76 92	19 19 29 37	0.6 0.5 0.7 1.2
S414 S415 S416 S417	60 66 79 105	89 94 103 121	40 40 50 71	79 80 86 100	20 20 25 35.5	0.9 1.0 1.1 1.9
106 series 106 00 058 106 00 003	33	52	60	45	14	0.14
106 00 187 106 00 189	40	61	60	51	15	0.17
240 series A100 A101 A102 A103	60 66 79 105	80 85 94.5 123	40 40 50 71	69 72 78 102	20 20 25 35.5	0.38 0.41 0.61 1.34
107 series 107 00 001 107 00 207	33 40	52 60	25 26.5	45 50	11 11.5	0.14 0.23

dimensions ref	A	B	C	D	E	pilot G thread	weight (kg)
290 series							
1	92	44	93	55	24	1/8"	0.4
2	142	69	155	65	27	1/8"	0.9
3	99	44	97	65	28	1/8"	0.4
4	151	69	159	75	32	1/8"	1.0
5	107	44	105	75	30	1/8"	0.5
6	179	85	192	90	41	1/8"	1.7
7	236	118	246	110	50	1/4"	2.7
8	243	118	262	120	60	1/4"	3.5
9	315	156	328	150	70	1/4"	6.8
10	347	156	352	190	86	1/4"	8.9
11	155	69	165	90	41	1/8"	1.4
12	217	85	229	110	50	1/8"	2.1
13	224	85	245	120	60	1/8"	2.9
14	267	118	276	150	70	1/4"	4.3
15	299	118	300	190	86	1/4"	6.3

South Korea

Tel: (82-31) 777 9650 Fax: (82-31) 777 9659
Email: asco.korea@ascovalve.net

Taiwan

Tel: (886-2) 2325 9555 Fax: (886-2) 2702 6009
Email: asco.taiwan@ascovalve.net

Thailand

Tel: (66-2) 563 5088 Fax: (66-2) 563 5089
Email: valvesales@ascovalve.net