



Motor Protection Circuit-Breakers Series 8527/2

- Explosion protection to
 - CENELEC
 - IEC
- Can be used in Zone 1 and Zone 2
- For protection of Ex e- and Ex d-motors
- Adjustable thermal over-current trip, phase failure sensitive
- Fast electromagnetic trip
- Robust enclosure of glass fibre-reinforced polyester resin
- Optionally with
 - Under-voltage trip
 - Shunt short trip
 - Ammeter
 - Auxiliary current switches

STAHL

Series 8527 motor protection circuit-breakers are used to protect both Ex e- and Ex d-motors and the installation.

The breakers are actuated by a rotatable grip, which also gives unambiguous switch position identification.

Zone 1 and Zone 2



Selection table		Circuit-breaker with or without ammeter							
Current adjustment range	Auxiliary contacts	Ordering code without accessories		with undervoltage trip		with shunt trip			
		without ammeter	with ammeter	without ammeter	with ammeter	without ammeter	with ammeter		
0,1... 0,16 A	without 1NO+1NC 2NO+2NC								
		8527/21-01-0001	8527/25-01-0001	8527/21-01-10_1	8527/25-01-10_1	8527/21-01-20_1	8527/25-01-20_1		
		8527/22-01-0201	8527/26-01-0201	8527/22-01-12_1	8527/26-01-12_1	8527/22-01-22_1	8527/26-01-22_1		
0,16 ... 0,25 A	without 1NO+1NC 2NO+2NC								
		8527/21-02-0001	8527/25-02-0001	8527/21-02-10_1	8527/25-02-10_1	8527/21-02-20_1	8527/25-02-20_1		
		8527/22-02-0201	8527/26-02-0201	8527/22-02-12_1	8527/26-02-12_1	8527/22-02-22_1	8527/26-02-22_1		
0,25...0,4 A	without 1NO+1NC 2NO+2NC								
		8527/21-03-0001	8527/25-03-0001	8527/21-03-10_1	8527/25-03-10_1	8527/21-03-20_1	8527/25-03-20_1		
		8527/22-03-0201	8527/26-03-0201	8527/22-03-12_1	8527/26-03-12_1	8527/22-03-22_1	8527/26-03-22_1		
0,4...0,63 A	without 1NO+1NC 2NO+2NC								
		8527/21-04-0001	8527/25-04-0001	8527/21-04-10_1	8527/25-04-10_1	8527/21-04-20_1	8527/25-04-20_1		
		8527/22-04-0201	8527/26-04-0201	8527/22-04-12_1	8527/26-04-12_1	8527/22-04-22_1	8527/26-04-22_1		
0,63...1 A	without 1NO+1NC 2NO+2NC								
		8527/21-05-0001	8527/25-05-0001	8527/21-05-10_1	8527/25-05-10_1	8527/21-05-20_1	8527/25-05-20_1		
		8527/22-05-0201	8527/26-05-0201	8527/22-05-12_1	8527/26-05-12_1	8527/22-05-22_1	8527/26-05-22_1		
1...1,6 A	without 1NO+1NC 2NO+2NC								
		8527/21-06-0001	8527/25-06-0001	8527/21-06-10_1	8527/25-06-10_1	8527/21-06-20_1	8527/25-06-20_1		
		8527/22-06-0201	8527/26-06-0201	8527/22-06-12_1	8527/26-06-12_1	8527/22-06-22_1	8527/26-06-22_1		
1,6...2,5 A	without 1NO+1NC 2NO+2NC								
		8527/21-07-0001	8527/25-07-0001	8527/21-07-10_1	8527/25-07-10_1	8527/21-07-20_1	8527/25-07-20_1		
		8527/22-07-0201	8527/26-07-0201	8527/22-07-12_1	8527/26-07-12_1	8527/22-07-22_1	8527/26-07-22_1		
2,5...4 A	without 1NO+1NC 2NO+2NC								
		8527/21-08-0001	8527/25-08-0001	8527/21-08-10_1	8527/25-08-10_1	8527/21-08-20_1	8527/25-08-20_1		
		8527/22-08-0201	8527/26-08-0201	8527/22-08-12_1	8527/26-08-12_1	8527/22-08-22_1	8527/26-08-22_1		
4...6,3 A	without 1NO+1NC 2NO+2NC								
		8527/21-09-0001	8527/25-09-0001	8527/21-09-10_1	8527/25-09-10_1	8527/21-09-20_1	8527/25-09-20_1		
		8527/22-09-0201	8527/26-09-0201	8527/22-09-12_1	8527/26-09-12_1	8527/22-09-22_1	8527/26-09-22_1		
6,3...9 A	without 1NO+1NC 2NO+2NC								
		8527/21-10-0001	8527/25-10-0001	8527/21-10-10_1	8527/25-10-10_1	8527/21-10-20_1	8527/25-10-20_1		
		8527/22-10-0201	8527/26-10-0201	8527/22-10-12_1	8527/26-10-12_1	8527/22-10-22_1	8527/26-10-22_1		
9...12,5 A	without 1NO+1NC 2NO+2NC								
		8527/21-11-0001	8527/25-11-0001	8527/21-11-10_1	8527/25-11-10_1	8527/21-11-20_1	8527/25-11-20_1		
		8527/22-11-0201	8527/26-11-0201	8527/22-11-12_1	8527/26-11-12_1	8527/22-11-22_1	8527/26-11-22_1		
12,5...16 A	without 1NO+1NC 2NO+2NC								
		8527/21-12-0001	8527/25-12-0001	8527/21-12-10_1	8527/25-12-10_1	8527/21-12-20_1	8527/25-12-20_1		
		8527/22-12-0201	8527/26-12-0201	8527/22-12-12_1	8527/26-12-12_1	8527/22-12-22_1	8527/26-12-22_1		
16...20 A	without 1NO+1NC 2NO+2NC								
		8527/23-13-0002	8527/25-13-0002	8527/23-13-10_2	8527/25-13-10_2	8527/23-13-20_2	8527/25-13-20_2		
		8527/24-13-0202	8527/26-13-0202	8527/24-13-12_2	8527/26-13-12_2	8527/24-13-22_2	8527/26-13-22_2		
20...22,5 A	without 1NO+1NC 2NO+2NC								
		8527/23-14-0002	8527/25-14-0002	8527/23-14-10_2	8527/25-14-10_2	8527/23-14-20_2	8527/25-14-20_2		
		8527/24-14-0202	8527/26-14-0202	8527/24-14-12_2	8527/26-14-12_2	8527/24-14-22_2	8527/26-14-22_2		

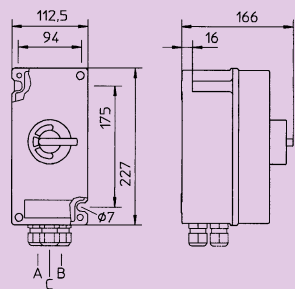
Add. to ordering code	Rated voltage for accessories	AC/DC	24 V ... 60 V		110 V ... 240 V	
			1*	2*	3	4
		AC	48 V; 50 Hz	5	6	7
			110 V; 50 Hz	6	7	8
			230 V; 50 Hz	7	8	9
			400 V; 50 Hz	8	9	
			415 V; 50 Hz	9		
			500 V; 50 Hz			

Technical data							
Explosion protection Temperature class	EEx de IIC T.						
	Type	Adjustment range	Temperature class				
	8527/21	0,1 A to 0,25 A	T6				
	8527/22	0,25 A to 12,5 A 12,5 A to 16 A	T5 T4				
	8527/23 8527/24 8527/25 8527/26	0,1 A to 12,5 A 16 A to 22,5 A	T6 T5				
Test certificate	BVS 94.C.2022 other certificates: BVS/DMT (German Federal Republic); SEV (Switzerland); BKI (Hungary)						
Enclosure material	Polyester resin						
Degree of protection	IP 65						
Switch element							
Main contacts Rated operating voltage U_e Rated operating current I_e	3-pole max. 690 V, AC, 50/60 Hz 0,1 A ... 22,5 A						
Switching capacity	according to adjustment range, see page 10/13 AC 3						
	230 V	400 V	500 V	690 V			
	7,0 kW	12,5 kW	16,0 kW	22 kW			
Thermal overcurrent trip	according to adjustment range, adjustable at switch						
Electromagnetic fast trip	At 12 times max. value of thermal overcurrent trip fixed						
Back-up fuse	Adjustment range		Highest rated current of fuses, gL, aM				
	from	to	230 V AC	400 V AC	500 V AC	690 V AC	
	0,1 A ...	1,6 A	short-circuit proof no fuse needed				
	1,6 A ...	2,5 A					25 A
	2,5 A ...	4,0 A					35 / 40 A
	4,0 A ...	6,3 A	50 A	40 A			
	6,3 A ...	9,0 A	80 A	50 A			
	9,0 A ...	12,5 A	80 A	80 A	50 A		
	12,5 A ...	20,0 A	100 A	100 A	50 A		
20,0 A ...	22,5 A	125 A	125 A	50 A			
Mechanical life	10 ⁵ Operations						
Ambient temperature	- 20 °C ... + 40 °C						
Connection	8527/21/22 directly to fitted components Main contacts ... 10 mm ² solid Auxiliary contacts ... 2,5 mm ² solid 8527/21 on terminals ... 2,5 mm ² solid 8527/23/24 ... 10 mm ² solid 8527/25/26						
Weights	8527/21	8527/22	8527/23	8527/24	8527/25	8527/26	
	2,8 kg	3,6 kg	4,1 kg	4,5 kg	4,6 kg	5,5 kg	
Switch grip	Labelling: 0 - I; in 0-position can be padlocked in 3 positions; Colour: Standard: grip and collar black; Special: red grip and yellow collar (EM-STOP)						
Accessories							
Auxiliary contacts Rated operating voltage U_e Rated operating current I_e	option: none; 1 NC + 1 NO; 2 NC + 2 NO max. 500 V; AC						
	AC 15	230 V 2 A	400V 0,5 A	DC 13	60 V 2,5 A	220 V 0,25 A	

Continuation →

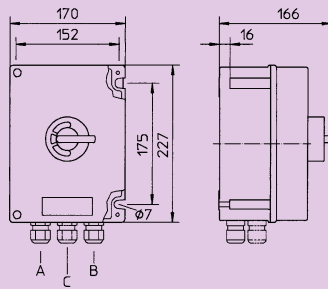
Technical data (Continuation)

Undervoltage trip Voltages	When power is lost, circuit-breaker trips; this prevents unwanted restarting, e.g. of a motor; available operating voltages U_C : 50 Hz: 48 V; 60 V; 110 V; 230 V; 400 V; 415 V; 500 V
Shunt trip Voltages	For remote tripping of circuit-breaker by applying actuating voltage available operating voltage U_e : AC / DC: 24 ... 60 V; 110 ... 240 V
Ammeter Movement Measuring range Overload capacity	Type 8403; dimensions 72 x 72 mm Moving iron; class 2.5; direct measuring; overload scale 1:2 dependent on switch setting range; see table below 2 x I_e cont.; 10 x I_e 25 s; 50 x I_e 1 s



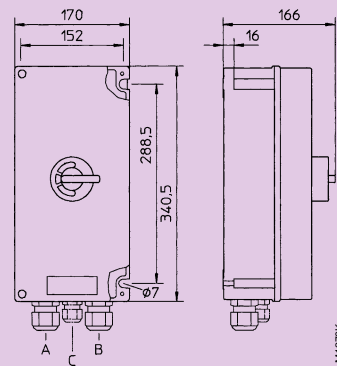
8527/21

M126BK



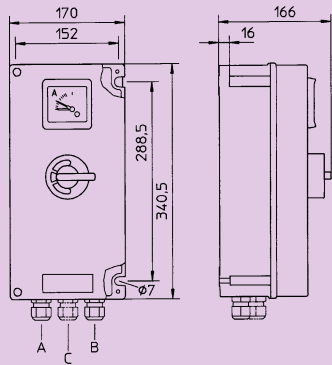
8527/22

M126BK



8527/23
8527/24

M127BK



8527/25
8527/26

M127BK

8527/2
Motor protection circuit-breakers

Cable entries

Type	Accessories	Cable glands 8161		Stopping plugs 8290 M25 x 1,5
		M25 x 1,5	M32 x 1,5	
8527/21	without	A + B	–	C
	with	A, B, C	–	–
8527/22	without	A + B	–	C
	with	A, B, C	–	–
8527/23; 8527/24	without	–	A + B	C
	with	C	A + B	–
8527/25; 8527/26 0,1 A ... 12,5 A	without	A + B	–	C
	with	A, B, C	–	–
12,5 A ... 22,5 A	without	–	A + B	C
	with	C	A + B	–

