



Indicating Lamp *NON-Ex* for Panel Mounting Series 8415

- Explosion protection to
– CENELEC
- For use in Ex i-circuits
- To operate via safety barriers
- Colours:
white, red, yellow, green
- With terminals


STAHL

This indicating lamp is designed especially to operate across safety barriers in intrinsically safe circuits. The proven LED is used as the light source.

The patented fixing mechanism saves time when inserting the control switches into switchgear panels.

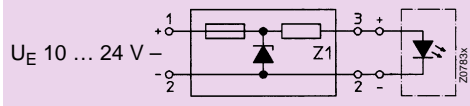
Zone 1 and Zone 2

Selection table

Version	Description	Ordering code	Weight [kg]	
8415 Indicating lamp 	Indicating lamp *NON-Ex* for Ex i-circuits	white	8415/24 – 50 – 9	0,13
		red	8415/24 – 50 – 2	0,13
		yellow	8415/24 – 50 – 4	0,13
		green	8415/24 – 50 – 5	0,13

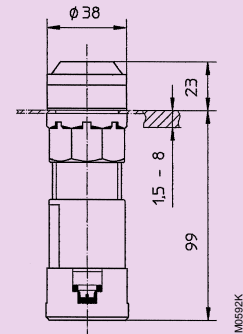
Note: Indicating lamp 8415 to be used in intrinsically safe circuits only!

Technical data

Explosion protection	EEx [ib] IIC or EEx [ia] IIC at the Ex i-circuit
Material Enclosure/bezel	Polyester/Polyamide
Rated voltage	at constant current 35 mA → U_e ca. 17 V, DC
Electrical life	10^5 output hours
Ambient temperature	-20° C ... +40° C
Degree of protection	IP 65 IP 20 terminals with cover
Colours	red, yellow, green, white
Terminals	2 x 1,5 mm ² flexible
Safety barriers	9001/01 – 280 – 110 – 10
Explosion protection	EEx [ia] II C/II B
Test certificate	Ex-91.C.2046 X
Rated voltage	$U_e = 24$ V, DC
Rated current	$I_e = 86$ mA
End-to-end resistance	RL = 277 Ω
Schematic	

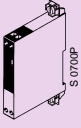

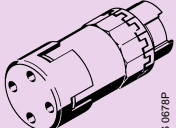
Note: Indicating lamp 8415 to be used in intrinsically safe circuits only!

Dimensions,
all dimensions in mm –
subject to alteration



STAHL

Accessories and spare parts

Designation	Description	Ordering code	Weight [kg]
Safety barrier	 Safety barrier for surface mounting	9001/01 – 280 – 110 – 10	0,05
Light source	 white red yellow green	84 150 13 21 0 84 150 10 21 0 84 150 11 21 0 84 150 12 21 0	0,15 0,15 0,15 0,15
Connection		84 150 90 79 0	0,1

Accessories e.g. additional disc, bezel see indicating lamp 8013, page 9/33