



Floodlight Series 6524

- Can be used in Zone 2
- Available in 3 sizes
- Lamp options:
 - Sodium vapour lamps up to 400 W
 - Halogen iodide lamps up to 400 W
- Upright mounting
- Stainless steel enclosure
- Quick-action fastener
 - Fast lamp change facility
- Options
 - Wire guard
 - Pole-mounting attachment
 - Reflectors, narrow or broad beam

Selection table

Version	Description Lamp type	Lampholder	Power	Tube	Temp. class	max. Ambient temp.	Ordering code	Weight [kg]
Floodlight for upright mounting for use in Zone 2	for high-pressure sodium lamps	E 27	70 W	tubular	T4	40 °C	6524/11-007-1-1-741	12,0
		E 40	100 W	tubular	T4	55 °C	6524/12-010-1-1-741	18,0
			150 W	tubular	T4	55 °C	6524/12-015-1-1-641	18,0
			250 W	tubular	T3	40 °C	6524/12-025-1-1-641	18,0
			250 W	tubular	T3	55 °C	6524/13-025-1-1-641	19,5
			400 W	tubular	T3	50 °C	6524/13-040-1-1-641	19,5
	for high-pressure iodide lamps	E 40	250 W	tubular	T3	40 °C	6524/12-025-1-1-341	18,0
		250 W	tubular	T3	55 °C	6524/13-025-1-1-341	19,5	
		400 W	tubular	T3	45 °C	6524/13-040-1-1-341	19,5	

Add. to ordering code: Specify rated voltage and frequency
Specify options required

Note: The fittings are supplied without lamps, please order as accessories!

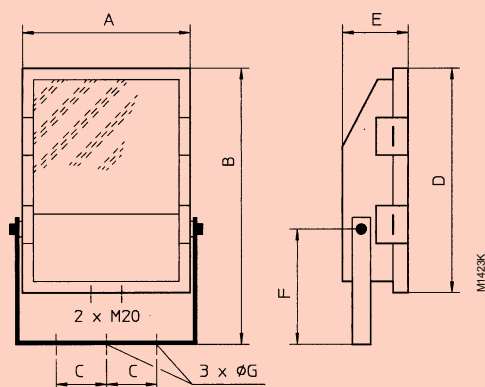
Zone 2



Technical data	
Explosion protection	Ex N II T3 / T4; dependent on version (Zone 2)
Test certificate	6524/11: BASEEFA Ex 97Y4257 6524/12: BASEEFA Ex 94Y4165 X 6524/13: BASEEFA Ex 97Y4294
Rated voltage	200 V ... 254 V, 50 Hz or 210 V ... 254 V, 60 Hz
Ambient temperature	- 20 °C ... + 40 °C
Material	
Enclosure	Stainless steel
Gasket	Silicon rubber
Fixing elements	Stainless steel
Cover	Safety glass
Cable entries	2 M20 threaded holes; 1 transit plug
Connection	3 terminals for max. 6 mm ² ; through-wiring possible
Ballast	integratal to fitting
Lampholder	E 27 or E 40, depending on size
Mounting	Upright mounting: on bracket, defined inclination Operating position: 6524/11 and /13: any 6524/12: controller not above lamp
Power factor	cos φ 0,85 for discharge lamps
Degree of protection	IP 66 / IP 67

Accessories and spare parts						
Designation	Description	Power	Tube	Lampholder	Ordering code	Weight [kg]
		100 W	tubular	E 40	461 889 0	0,06
		150 W	tubular	E 40	461 667 0	0,17
		250 W	tubular	E 40	461 668 0	0,20
		400 W	tubular	E 40	461 670 0	0,21
High-pressure iodide lamps		250 W	tubular	E 40	461 650 0	0,18
		400 W	tubular	E 40	461 652 0	0,19

Dimensions (in mm)



Type	Dimensions in mm						
	A	B	C	D	E	F	Ø G
6524/11	308	443	75	348	150	175	12
6524/12	415	630	150	490	185	260	13
6524/13	456	640	150	490	219	260	13