



Floodlight Series 6121

- Can be used in Zone 1 and Zone 2
- Lamp options:
 - Sodium vapour lamps up to 400 W
 - Halogen iodide lamps up to 400 W
 - Halogen lamps up to 500 W
- In versions for
 - Upright mounting
 - Suspension mounting
- Enclosure in cast aluminium, mounting components in stainless steel
- Fast lamp change facility
- Options
 - Wire guard
 - Dazzle-limiting
 - Pole mounting attachment
 - PTFE coating
 - M25 cable entries

Selection table

Version	Description Lamp type	Lamp- holder	Power	Temp. class	max. Ambient temp.	Ordering code	Weight [kg]
Floodlight upright mounting for use in Zone 1 and Zone 2	for high-pressure sodium lamps	E 40	150 W	T3	55 °C	6121/32-015-1-2-611	28
			250 W	T3	55 °C	6121/32-025-1-2-611	28
			400 W	T3	55 °C	6121/32-040-1-2-611	28
	for high-pressure iodide lamps	E 40	250 W	T4	40 °C	6121/32-025-1-2-311	28
			400 W	T3	55 °C	6121/32-040-1-2-311	28
	for halogen lamps	E 40	up to 500 W	T3	40 °C	6121/32-050-1-1-211	26
Floodlight as pendant fittings for use in Zone 1 and Zone 2	for high-pressure sodium lamps	E 40	150 W	T3	55 °C	6121/34-015-1-2-611	28
			250 W	T3	55 °C	6121/34-025-1-2-611	28
			400 W	T3	55 °C	6121/34-040-1-2-611	28
	for high-pressure iodide lamps	E 40	250 W	T4	40 °C	6121/34-025-1-2-311	28
			400 W	T3	55 °C	6121/34-040-1-2-311	28
	for halogen lamps	E 40	up to 500 W	T3	40 °C	6121/34-050-1-1-211	26

Add. to ordering code: Specify rated voltage and frequency.
Specify options required.

Note: The fittings are supplied without lamps, please order as accessories!

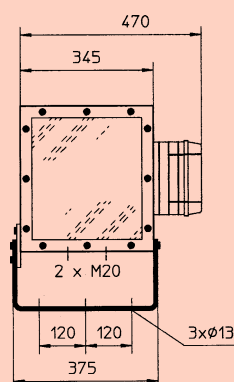
Zone 1 and Zone 2



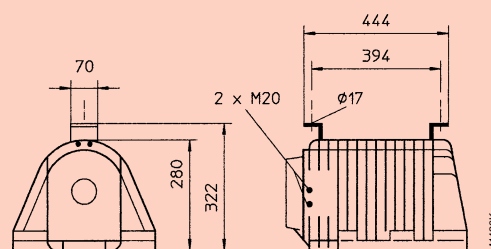
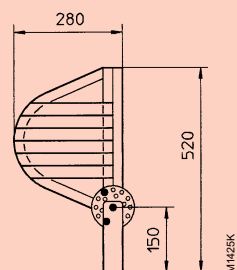
Technical data	
Explosion protection	EEx de IIC T4 or T3, depending on version
Test certificate	BASEEFA 99 ATEX 2006
Rated voltage	220 V ... 254 V, 50 Hz or 240 V ... 277 V, 60 Hz
Ambient temperature	- 20 °C ... + 40 °C (max. temperature see selection table, - 50 °C IIB optional)
Material	
Enclosure	Cast aluminium
Fixing elements	Stainless steel
Cover	Safety glass
Cable entries	Standard: 2 M20 threaded holes Special: 2 M25 threaded holes possible
Connection	3 terminals for max. 6 mm ² ; through-wiring is possible
Ballast	integral in fitting
Mounting	Upright mounting: on bracket, defined inclination possible Pendant: with fixing brackets Operating position: any
Power factor	cos φ 0,85 for high pressure iodure lamps
Light deflection	Standard: broad bowl
Degree of protection	IP 66 / IP 67

Accessories and spare parts						
Designation	Description				Ordering code	Weight [kg]
		Lampholder	Power	Tube		
High-pressure sodium lamps		E 40	150 W	tubular	461 667 0	0,17
			250 W	tubular	461 668 0	0,20
			400 W	tubular	461 670 0	0,21
High-pressure mercury lamps		E 40	250 W	tubular	461 650 0	0,18
			400 W	tubular	461 652 0	0,19
Halogen lamps		E 40	500 W	tubular	461 641 0	0,15

Dimensions (in mm)



6121/32
Floodlight upright version



6121/34
Floodlight pendant version