

## Section E

## ENCLOSURES INDEX



**DB Series**  
Junction Boxes .....2-3



**TEF/TEB Series**  
Terminal Enclosures .....4-6



**GE Series**  
With Terminal Block.....7



**HK Series**  
ATEX Terminal Boxes .....8



**EXB Series**  
Junction Boxes .....9-12



**B7E Series**  
Junction Boxes .....13-14



**XB Series**  
Junction Boxes .....15



**XJB Series**  
Junction Boxes .....16-17

**Blank Mounting Pans** .....18

**Enclosure Options** .....19



**GL/GLXR Series**  
Round & Rectangular Lenses.....19-21



**CBH Series**  
Circuit Breaker Handles .....22



**TWBE Series**  
Terminal Blocks.....23



**GR Series**  
Threaded Enclosures .....24-29



**HK/2HK Series**  
Instrument/Device Enclosures .....30-33

**Conduit Opening Data** .....34



**Class II, Div. 1 & 2, Groups E,F,G**  
**Class III**  
**NEMA 3R, 4, 4X, 9(E,F,G)**



Listed - File E10514



Certified - File LR11716



File 25132

APPROVED

See files for details or call Killark.

## FEATURES-SPECIFICATIONS

### Applications

- Hazardous locations due to the presence of combustible dusts or easily ignitable fibers or flyings
- Damp or wet locations (raintight)

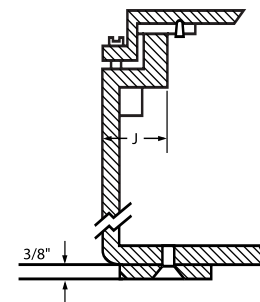
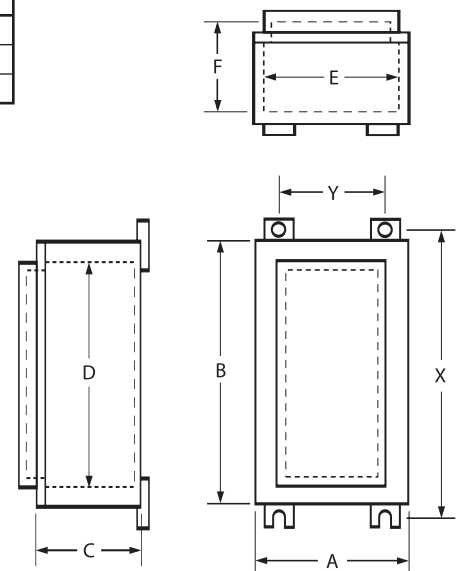
### Features

- Copper-free aluminum (less than 4/10 of 1%)
- Surface mounting type box with raised cover
- Mounting lugs included as standard
- Cover screws are stainless steel
- Gaskets mechanically fastened to cover
- All DB boxes cast with wall thicknesses suitable to drill and tap conduit openings. Conduit openings may be factory or field installed. See chart for conduit size limitations. See page E34 for conduit opening data
- Enclosures are available blank or with factory modifications, options and accessories. See catalog pages E18-23 for additional details

MODIFICATIONS	
CATALOG NUMBER	DESCRIPTION
KIT-251	100 Amp ground lug
KIT-252	225 Amp ground lug

SUFFIX NUMBER	DESCRIPTION
SU2	Hinge installed
SU3	Drain and breather installed
SU8	Pan mounting studs

BOX WIDTH	"J" DIMENSION
6	1
8 THRU 20	1-3/8
24 AND LARGER	2



**KILLARK®**



**Class II, Div. 1 & 2, Groups E,F,G**  
**Class III**  
**NEMA 3R, 4, 4X, 9(E,F,G)**



Listed - File E10514



Certified - File LR11716



File 25132

APPROVED

See files for details or call Killark.

**FEATURES-SPECIFICATIONS**

DB ENCLOSURES WITH MOUNTING LUGS															
CATALOG NUMBER	NOMINAL DIMENSIONS								MOUNTING DIMENSIONS		CATALOG NUMBER		MAX SIZE <sup>①</sup> CONDUIT OPENING		MAXIMUM NUMBER OF OPERATORS†
	OUTSIDE			INSIDE			COVER OPENING				OPTIONAL HINGE TYPE	OPTIONAL MOUNTING PAN <sup>②③</sup>	ENDS	BACK & SIDE	
	A	B	C	D	E	F	G	H	X	Y					
DB-664	6"	6"	4"	5-3/8"	5-3/8"	4-7/32"	4-1/4"	4-1/4"	7-1/4"	4-1/4"	HINGE-4	6307-6	2	2	1 row of 1 = 1
DB-884	8"	8"	4"	7-3/8"	7-3/8"	4-5/8"	5-7/16"	5-7/16"	9-1/4"	5-7/16"	HINGE-4	6247-8	2	2	2 rows of 2 = 4
DB-886	8"	8"	6"	7-3/8"	7-3/8"	6-5/8"	5-7/16"	5-7/16"	9-1/4"	5-7/16"	HINGE-4	6247-8	2	2	2 rows of 2 = 4
DB-8106	8"	10"	6"	9-3/8"	7-3/8"	6-5/8"	7-9/32"	5-5/16"	11-1/4"	5-5/16"	HINGE-4	6247-10	2	2	2 rows of 2 = 4
DB-6126	6"	12"	6"	11-3/8"	5-3/8"	6-7/32"	10-3/16"	4-5/16"	13-1/4"	4-5/16"	HINGE-4	6307-12	2	2	4 rows of 1 = 4
DB-8146	8"	14"	6"	13-3/8"	7-3/8"	6-5/8"	11-1/4"	5-5/16"	15-1/4"	5-5/16"	HINGE-4	6247-14	2	2	4 rows of 2 = 8
DB-8188	8"	18"	8"	17-3/8"	7-3/8"	8-5/8"	15-1/4"	5-5/16"	19-1/4"	5-5/16"	HINGE-4	6247-18	2	2	5 rows of 2 = 10
DB-10106	10"	10"	6"	9-3/8"	9-3/8"	6-1/2"	7-5/16"	7-5/16"	11-1/4"	7-5/16"	HINGE-4	6248-10	2	2	2 rows of 2 = 4
DB-10148	10"	14"	8"	13-3/8"	9-3/8"	8-1/2"	11-5/16"	7-5/16"	11-1/4"	7-5/16"	HINGE-4	6248-14	2	2	4 rows of 2 = 8
DB-12148	12"	14"	8"	13-3/8"	11-3/8"	8-7/16"	11-5/16"	9-5/16"	15-1/4"	9-5/16"	HINGE-4	6249-14	4	2	4 rows of 3 = 12
DB-12168	12"	16"	8"	15-3/8"	11-3/8"	8-9/16"	13-1/4"	9-1/4"	14-1/4"	9-1/4"	HINGE-4	6249-16	4	2	4 rows of 3 = 12
DB-12188	12"	18"	8"	17-3/8"	11-3/8"	8-5/8"	15-5/32"	9-5/32"	19-1/4"	9-5/32"	HINGE-4	6249-18	4	2	5 rows of 3 = 15
DB-12248	12"	24"	8"	23-3/8"	11-3/8"	8-1/6"	21-5/16"	9-5/16"	25-1/4"	9-5/16"	HINGE-4	6249-24	4	2	8 rows of 3 = 24
DB-16188	16"	18"	8"	17-3/8"	15-3/8"	8-9/16"	15-5/16"	13-5/16"	19-1/4"	13-5/16"	HINGE-4	6250-18	4	2	5 rows of 4 = 20
DB-16248	16"	24"	8"	23-3/8"	15-3/8"	8-9/16"	21-5/16"	13-5/16"	25-1/4"	13-5/16"	HINGE-4	6250-24	4	2	8 rows of 4 = 32
DB-16368	16"	36"	8"	35-3/8"	15-3/8"	8-9/16"	33-5/16"	13-5/16"	37-1/4"	13-5/16"	HINGE-4	6250-36	4	2	12 rows of 4 = 48
DB-20248	20"	24"	8"	23-3/8"	19-3/8"	8-9/16"	21-1/2"	17-1/2"	25-1/4"	17-1/2"	HINGE-4	6251-24	4	2	8 rows of 6 = 48
DB-203010	20"	30"	10"	29-3/8"	19-3/8"	10-5/8"	27-1/4"	17-1/4"	31-1/4"	17-1/4"	HINGE-4	6251-30	4	2	10 rows of 6 = 60
DB-243010	24"	30"	10"	29-1/8"	23-1/8"	10-7/16"	26"	20"	32"	20"	*HINGE-11L	6252-30	4	4	10 rows of 7 = 70
DB-243610	24"	36"	10"	35-3/8"	23-3/8"	10-7/16"	32"	20"	38"	20"	*HINGE-11L	6252-36	4	4	12 rows of 7 = 84

① These limits are necessary to assure 3-1/2 full threads to meet Class II requirements.

② Boxes are not factory machined for a mounting pan. Add suffix SU8 if box is to be supplied with pan mounting studs.

③ When pan is ordered without box, it is supplied with studs and hardware for field mounting. Machining of box for pan studs is required.

\* 24" wide enclosures are furnished with hinged covers on left side as a standard feature.

† Maximum number of "G" series control operators permitted in cover, down + across = total.

Use short style "G" series operators.



**KILLARK®**


**FRP Enclosure  
Size 08**

**Stainless Steel Enclosure  
Size 06**

**Stainless Steel Enclosure  
Size 09**

Class I, Div. 2, Groups A,B,C,D  
Class I, Zones 1 & 2, Groups IIC, IIB, IIA  
Class II, Div. 1 & 2, Groups E,F,G ①  
Class III  
NEMA 3, 4, 4X  
(A) Ex e II T6 IP66\*



**Requires factory assembly**

\* Dependent on cable entry connector types

## TECHNeTERM

### Applications

- Hazardous and corrosive environments such as refineries, chemical plants, water treatment and bio gas plants, and wherever a combustible gas-air mixture or combustible dust may occur
- Used to link electrical wires. Primary circuit brought into the enclosure is distributed to field control devices or sensors
- TECHNeTERM Series for power and control circuits
- TECHNiTERM Series for intrinsically safe circuits is available upon request. Includes blue colored DIN rail line-up terminals

### Features

- Pre-configured enclosures with DIN rail mounted terminals installed eliminates time consuming engineering and sourcing
- Enclosures are available in Fiber-glass Reinforced Polyester or 316 electro-polished Stainless Steel
- Weidmuller or Phoenix increased safety 600 volt rated DIN rail line-up terminals
- Factory installed conduit openings, cable glands, flange (binding) plates and hinges are available upon request.

### Dimensions

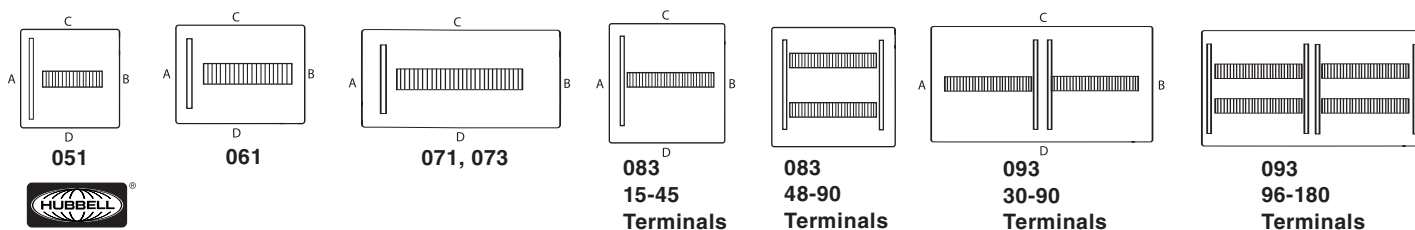
See page E5 for FRP and page E6 for steel enclosures.

## FEATURES-SPECIFICATIONS

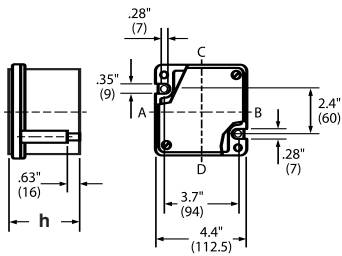
TEF/TEB/TEA ENCLOSURES WITH WEIDMÜLLER TERMINALS					
TERMINAL QTY.	WIRE RANGE AWG	TERMINAL SIZE MM2	GROUND WIRE CONNECTIONS	CATALOG NUMBER POWER AND CONTROL CIRCUITS	
				FRP	STAINLESS STEEL
18	22-12	2.5	14	TEF051DW12018	TEB051DW12018
15	22-10	4	14	TEF051DW10015	TEB051DW10015
9	20-8	10	12	TEF051DW08009	TEB051DW08009
24	22-12	2.5	14	TEF061DW12024	TEB061DW12024
21	22-10	4	14	TEF061DW10021	TEB061DW10021
12	20-8	10	12	TEF061DW08012	TEB061DW08012
45	22-12	2.5	14	TEF071DW12045	TEB071DW12045
36	22-10	4	14	TEF071DW10036	TEB071DW10036
24	20-8	10	12	TEF071DW08024	TEB071DW08024
45	22-12	2.5	14	TEF073DW12045	TEB073DW12045
36	22-10	4	14	TEF073DW10036	TEB073DW10036
24	20-8	10	12	TEF073DW08024	TEB073DW08024
18	14-6	16	12	TEF073DW06018	TEB073DW06018
45	22-12	2.5	36	TEF083DW12045	TEB083DW12045
36	22-10	4	36	TEF083DW10036	TEB083DW10036
24	20-8	10	24	TEF083DW08024	TEB083DW08024
18	14-6	16	24	TEF083DW06018	TEB083DW06018
12	12-2	35	24	TEF083DW02012	TEB083DW02012
90	22-12	2.5	72	TEF083DW12090	TEB083DW12090
72	22-10	4	72	TEF083DW10072	TEB083DW10072
48	20-8	10	48	TEF083DW08048	TEB083DW08048
90	22-12	2.5	72	TEF093DW12090	TEB093DW12090
72	22-10	4	72	TEF093DW10072	TEB093DW10072
48	20-8	10	48	TEF093DW08048	TEB093DW08048
36	14-6	16	48	TEF093DW06036	TEB093DW06036
24	12-2	35	48	TEF093DW02024	TEB093DW02024
180	22-12	2.5	144	TEF093DW12180	TEB093DW12180
144	22-10	4	144	TEF093DW10144	TEB093DW10144
96	20-8	10	96	TEF093DW08096	TEB093DW08096

For Phoenix Type UK Terminals—Change Bold 'W' to 'P'.  
©CSA Certified for Class II, Div. 1&2, EFG. UL Listed for Class II, Div. 2, FG.

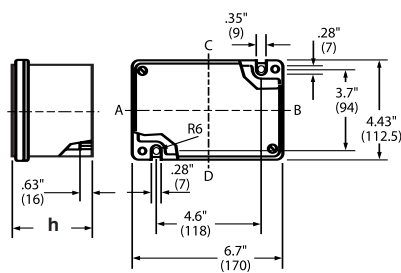
### Terminal Layout



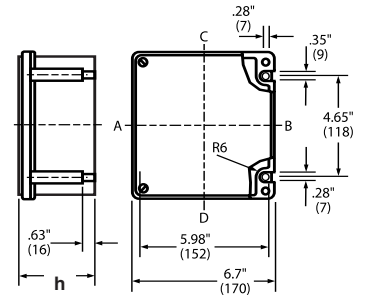
**KILLARK®**



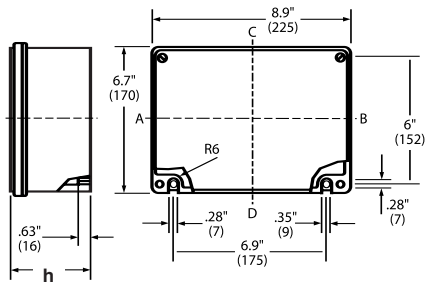
**Size 03**



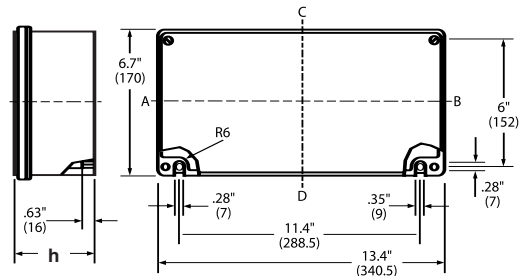
**Size 04**



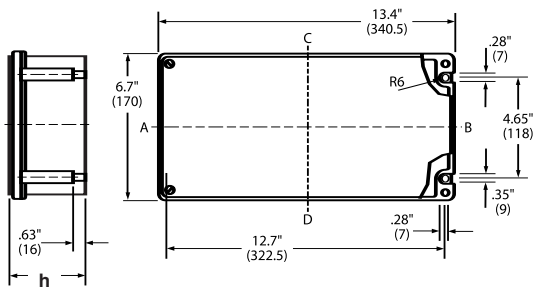
**Size 05**



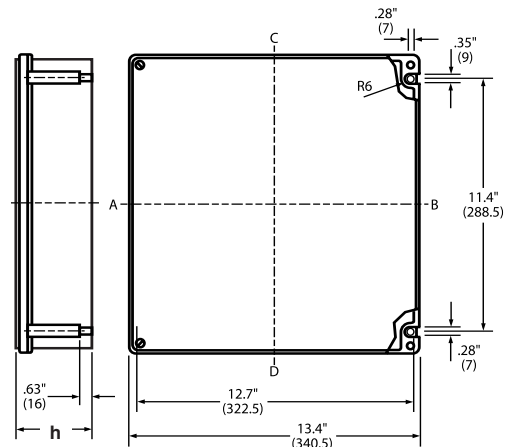
**Size 06**



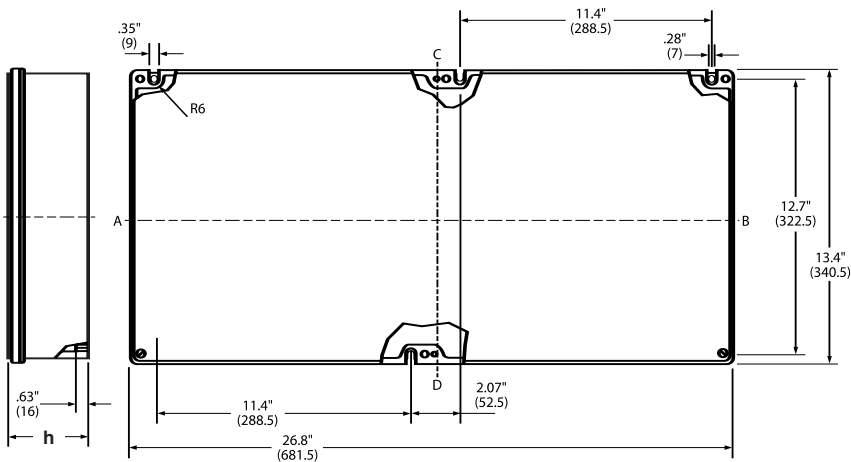
**Size 07**



**Size S7**

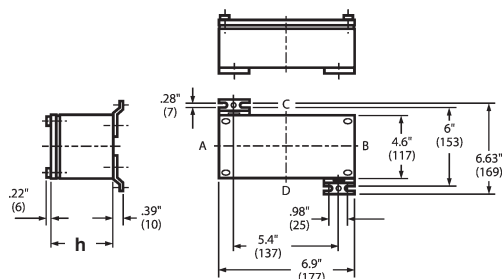


**Size 08**

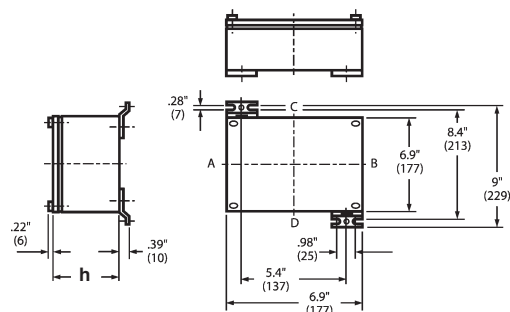


**Size 09**

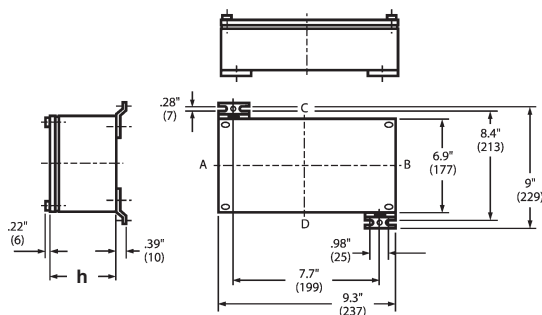
AVAILABLE ENCLOSURE DEPTHS						
DEPTH CODE (h)	1	2	3	4	5	6
ENCLOSURE SIZE	3.6" (91)	5.2" (131)	5.9" (150)	6.7" (171)	7.5" (190)	9" (230)
03	x	—	—	—	—	—
04	x	—	—	—	—	—
05	x	x	—	—	—	—
06	x	x	—	—	—	—
07	x	x	x	—	x	—
S7	x	—	x	—	—	—
08	x	x	x	x	x	x
09	x	x	x	—	x	—



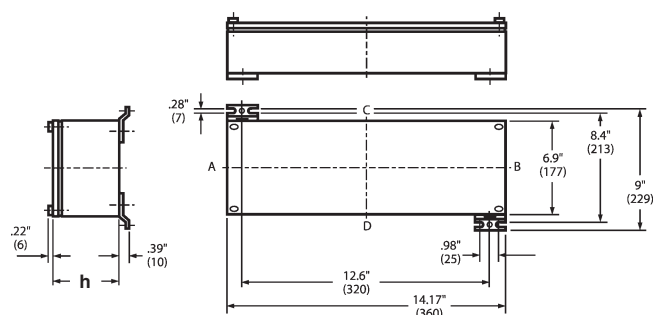
Size 04



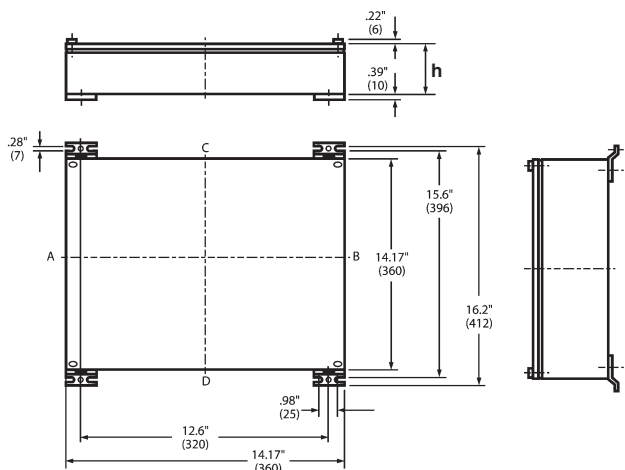
Size 05



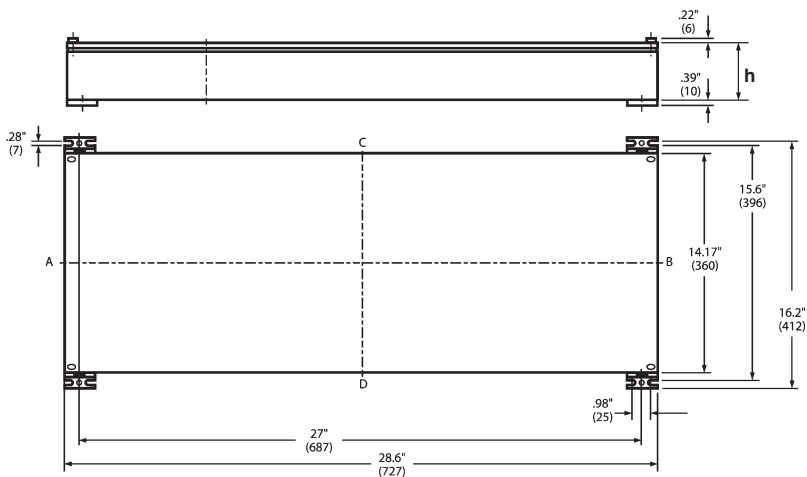
Size 06



Size 07



Size 08

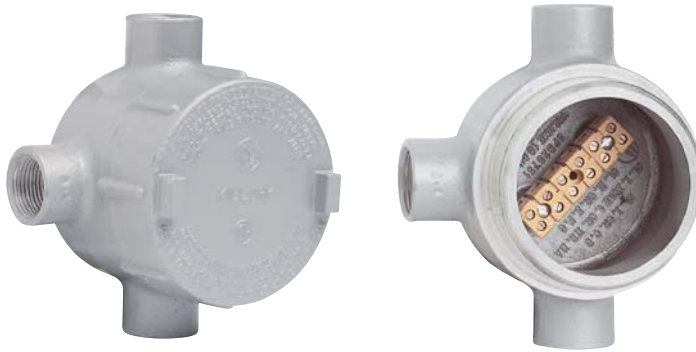


Size 09

**AVAILABLE ENCLOSURE DEPTHS**

DEPTH CODE (h)	1	3	5	6
ENCLOSURE SIZE	3.6"(91)	5.9"(150)	7.5"(190)	9"(230)
04	x	—	—	—
05	x	—	—	—
06	x	x	—	—
07	x	x	—	—
08	x	x	x	x
09	x	x	x	—


**KILLARK®**



**GECTT-2-6TB**

**Class I, Div. 1 & 2, Groups C,D**  
**Class I, Zones 1 & 2, Groups IIB, IIA**  
**Class II, Div. 1 & 2, Groups E,F,G**  
**Class III**  
**NEMA 7(C,D), 9(E,F,G)**

Listed - File E10514

Certified - File LR11716

## FEATURES-SPECIFICATIONS

### Applications

GE series conduit boxes with terminals are installed in conduit systems within hazardous areas to:

- Protect conductors in threaded rigid conduit
- Act as pull and splice boxes
- Interconnect lengths of conduit
- Change conduit direction
- Provide access to conductors for maintenance and future system changes
- Used to link electrical wires. Primary circuit brought into the enclosure is distributed to field control devices or sensors

### Features

- Water shedding cover-suitable for wet locations when mounted in upright position
- External cover threads on body protecting conductors from damage during pulling
- No pinching of conductors during cover installation

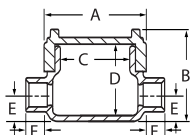
- Three different hub arrangements
- Taper threaded hubs to provide ground continuity
- Smooth integral hub bushing to protect conductor insulation when pulling
- Weather-resistant finish
- Green ground screw standard in all boxes
- Weidmuller 6 point MK3 terminal block is mounted inside box on raised pads

- Terminal rated 300V max/20 AMP/for wire size #22--12AWG
- Hub type XTF furnished with mounting flange

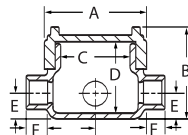
### Material/Finish

- Body and cover are copper-free aluminum (less than 4/10 of 1%)
- Finish-Electrostatically applied powder coating

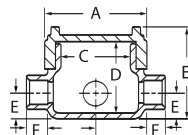
GE SERIES OUTLET BOX WITH 6 POINT TERMINAL BLOCK										
HUB TYPE	CATALOG NUMBER	HUB SIZE	A	B	C	D	E	F	COVER OPENING	VOLUME CU. IN.
C	GECTT-2-6TB	3/4"	3-11/16" (94)	3-5/8" (92)	2-11/16" (68)	2-3/4" (70)	1" (25)	13/16" (21)	2-11/16" (68)	19
T	GECTT-2-6TB	3/4"								
X	GECXT-2-6TB	3/4"								
XTF	GECXTF-2-6TB	3/4"								



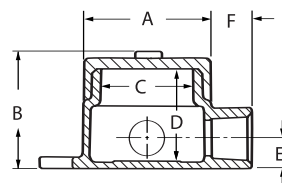
**C Type**



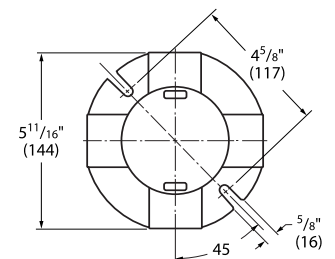
**T Type**



**X Type**



**XTF Type  
With Mounting Flange**




**NEW!**
**ATEX Certified**

**Class I, Div. 1 & 2, Groups A\*,B, C,D\*\***  
**Class I, Zones 1 & 2, Groups IIB+H<sub>2</sub>, IIA**  
**Class II, Div. 1 & 2, Groups E,F,G**  
**Class III**  
**NEMA 3, 4, 4X**



Classified - File E83969  
 & file E150827



Certified - File LR11716



Certified - File 1W1R4-RE



UL DEMKO 06 ATEX 0521635/141023 **CE** 0539

II 2 G EEx e II T3 - T4

II 2 G EEx d IIC T3 - T4

II 2 D IP66 T110° C - T140° C

**FEATURES-SPECIFICATIONS**
**UL DEMKO**  
**Increased Safety/Flame Proof**  
**Terminal Enclosure**
**Applications**

- Used within hazardous areas to splice or terminate conductors by means of a terminal block
- Act as pull and splice boxes
- Provide access to conductors for maintenance and future system changes
- Used to link electrical wires. Primary circuit brought into the enclosure is distributed to field control devices or sensors

**Features**

- Select from 4 body types and 6 different covers
- Single port box provided with two 3/4" NPT standard openings. One additional 1/2" or 3/4" NPT can be added.
- Double port has three 3/4"NPTS as standard.
- Maximum (10) 2.5mm<sup>2</sup> blocks. Quantity doubles for 2HKB's.
- 630 Volts max. and 60 Amps max.

**Notes:**

\* Group A FM only on HK single cover box. Order with - GA suffix.

\*\* Seal within 18" of enclosure for Group BCD and within 6" for Group A in accordance with sections 501-5 and 502-5 of the National Electric Code.

**Catalog Number Logic**  
**HK Series ATEX Terminal Box**
**HKB B \* T O W 10 2**

Black Box Type

HKB - Aluminum

HKBD - Aluminum Deep

HKSB - 316 Stainless Steel

2HKB - Double Port

Cover Assembly

B - Blank Cover

GL - Glass Lens Cover

1GLD - 1 in. Glass Lens Lrg. Cover

2GLD - 2 in. Glass Lens Lrg. Cover

2D - 2 in. high Dome Cover

4D - 4 in. high Dome Cover

Second Cover Assembly for

2HKB only

B - Blank Cover

GL - Glass Lens Cover

1GLD - 1 in. Glass Lens Lrg. Cover

2GLD - 2 in. Glass Lens Lrg. Cover

2D - 2 in. high Dome Cover

4D - 4 in. high Dome Cover

Type of Protection

T - ATEX Type d or e

Indicates Terminal Block Wire Size

2 - 2.5 mm<sup>2</sup> (No. 12 AWG max.)

4 - 4 mm<sup>2</sup> (No. 10 AWG max.)

6 - 6 mm<sup>2</sup> (No. 8 AWG max.)

10 - 10 mm<sup>2</sup> (No. 6 AWG max.)

Indicates Total Number of Terminal Blocks

2.5 mm<sup>2</sup> - 10 max.

4 mm<sup>2</sup> - 8 max.

6 mm<sup>2</sup> - 6 max.

10 mm<sup>2</sup> - 4 max.

Type of Manufacturer  
 W - Weidmuller

Side Alternate Machining  
 0 - None

1 - 1/2 in. NPT

2 - 3/4 in. NPT

25 - 3/4 in. NPSM

Ordering Example: HKB-B-TIW102

Description: HKB box with blank cover, with 1/2" NPT (in the side) pad, with qty. ten 2.5mm<sup>2</sup> Weidmuller terminal blocks.

Dimensions: See pages E32 and E33.


**KILLARK®**





**QUANTUM**

#### Applications

- Locations made hazardous due to the presence of flammable gases or vapors, combustible dust, or easily ignitable fibers and flyings, and areas which are subject to corrosion, weather and dampness
- Petroleum Refineries, Chemical and Petrochemical plants with indoor and outdoor processes
- Applications requiring junction, pull and/or splices boxes
- Enclosure to house control stations, meters, relays, starters, circuit breakers, terminal blocks and other equipment or devices

• **Global applications\* (ATEX)**  
Enclosures are available for global applications with “CEN” suffix. Assemblies that are modified to CENELEC/ATEX standards maintain their North American certifications.

- Enclosures are available blank or with factory modifications, options and accessories. See catalog pages E18-E23 for additional details

**Class I, Div. 1 & 2,  
Groups B<sup>①</sup>, C, D  
Class I, Zones 1 & 2,  
Groups IIB+H<sub>2</sub>, IIA  
Class II, Div. 1 & 2,  
Groups E, F, G  
Class III, Div. 1 & 2  
NEMA 3, 4, 4X<sup>②</sup>,  
7(B, C, D), 9(E, F, G)  
CENELEC/ATEX/IEC Ex  
Ex d IIB + H<sub>2</sub> T5 or T6  
Ex + D A21 IP66  
Ta< + 60°C**

**ATEX / IEC Ex\*\* Certified**

- UL #UL886 - Outlet Boxes and Fittings for use in Hazardous (Classified) Locations. File #E10514
- UL #UL698 & #UL1203 - Explosion Proof and Dust Ignition Proof Electrical Equipment. Files #E83969 & E12379
- SP #C22.2 No. 30-M1986 -Explosion Proof Enclosure for use in Class I Hazardous Locations. FILE #LR11716
- CENELEC IIG  
PTB 07 ATEX 1025U (Empty Housing)  
PTB 07 ATEX 1024X (Enclosure with Controls)

#### FEATURES-SPECIFICATIONS

##### Features

- Copper-Free Cast Aluminum Construction. High strength, lighter in weight, corrosion resistant
- Fewer Cover Bolts. Computer-aided design lessens the number of cover bolts by eliminating corner bolts. Reduces installation and maintenance time
- Gasketed Flange. Nitrile (BUNA-N) “O” ring gasket is located inside bolt circle to prevent water seeping into enclosure
- Ductile Mounting Lugs. Lugs are made of ductile aluminum alloy to adjust to irregular mounting surfaces without damaging enclosure. Enclosure size 8x12x6 and larger furnished with bi-directional mounting lugs which may be positioned either vertically or horizontally to facilitate mounting
- Hinges. All enclosure sizes 8x12x6 and larger are supplied as standard with hinges mounted on the left side. Smaller enclosures are drilled for field installation of two Killark HINGE-9 assemblies or can be installed at factory by adding SU2 to catalog number. For hinges to be located in other positions, specify when ordering

- Recessed Flange Notches. Flanges are notched to allow for easier cover opening with prying instrument without flange damage
- Conduit Openings. Enclosures are cast with wall thickness suitable for drilling and tapping of conduit openings in all sides and back of boxes. Conduit size and location information is found on dimensional chart (see page E34). Conduits can be factory or field installed
- Mounting Pan Bosses. Mounting pan bosses are pre-drilled at factory for field mounting of optional mounting pan

##### Material/Finish

- Enclosure: Copper-free aluminum (less than 4/10 of 1%)
- Hinges: Aluminum with stainless steel hardware
- Cover Bolts or Steel
- Optional Mounting Pans: Sheet aluminum
- Optional Windows: Tempered soda lime glass
- Aluminum Lacquer Paint Finish Standard

\*\* Note: IEC Ex available 4Q07

① Conduits must be sealed within 18" for Group B applications.

② NEMA 4X with optional SU-1 modification.



**KILLARK**



See page E9  
for area classification  
and certification information

## FEATURES-SPECIFICATIONS

MODIFICATIONS	
SUFFIX NUMBER	DESCRIPTION
KIT-251	100 amp ground lug
KIT-252	225 amp ground lug
SU3 <sup>①</sup>	Drain & breather installed (NEMA 7CD)
SU3B <sup>①②</sup>	Drain & breather installed (NEMA 7BCD)
SU94	Drill tap & plug for future drain and breather
SU2	Hinges installed (6x6, 8x8, 8x10 enclosure)
SU9	Special paint finish
SU14	Fungus proofing of enclosure
SU93	Do not paint enclosure
SU1	Stainless steel external hardware (NEMA 4X)

①The installation of a Drain & Breather will void the NEMA 4-4X ratings of enclosure.

②Not CSA

### Hinges

Hinges are provided standard on 6x12x4 EXB boxes and on sizes 8x12x6 and larger. Smaller size EXB boxes are factory drilled for field installation of (2) HINGE-9 on left side.

For replacement hinges use HINGE-11L for enclosures size 8x12x6 through 16x24x10. HINGE-10L is for use with box size 18x24x8 and larger. (See page E19 for hinge information.)

Order Mounting pan as separate item and specify if factory or field installed.

† Maximum number of "G" series control operators permitted in cover, down + across = total. Use long style "G" series operators on boxes up to 16 x 16 x 8. Use extended style "G" series operators on boxes 16 x 24 x 8 and larger.

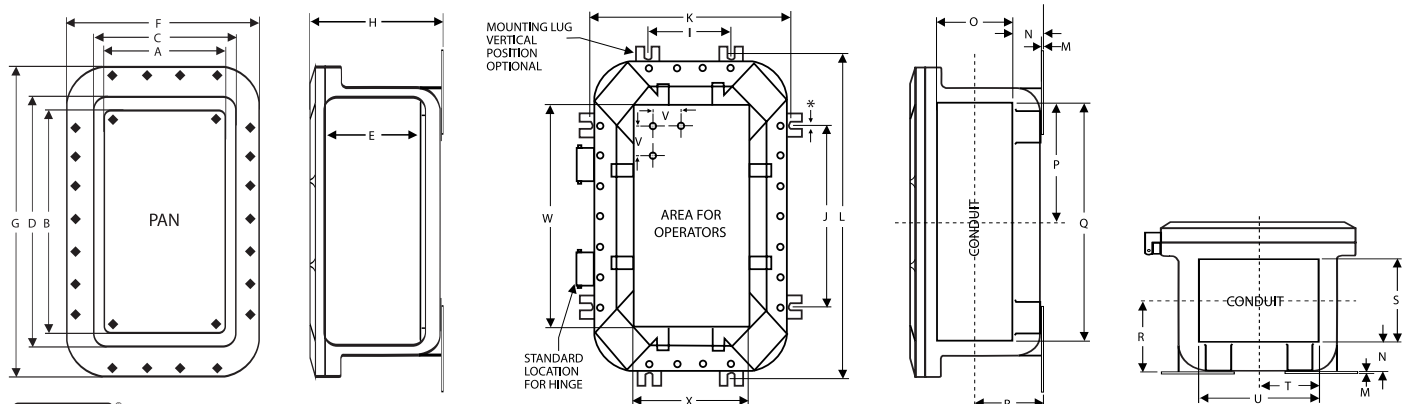
Note: For Group B applications all conduit openings must be sealed within 18" of enclosures.

EXB JUNCTION BOXES AND ENCLOSURES					
CATALOG NUMBER	NOMINAL ENCLOSURE INSIDE DIMENSIONS W" L" D"	MAXIMUM CONDUIT SIZE	OPTIONAL MOUNTING PAN NUMBER	MAXIMUM NUMBER OF OPERATORS†	
EXB-664 N34	6x6x4	2"	7997-5	2 rows of 2 = 4	
EXB-684 N34	6x8x4	2"	7997-1	2 rows of 3 = 6	
EXB-6124 N34	6x12x4	2"	7997-6	4 rows of 2 = 8	
EXB-886 N34	8x8x6	2"	7996-1	3 rows of 3 = 9	
EXB-8104 N34	8x10x4	2"	7996-2	4 rows of 3 = 12	
EXB-8106 N34	8x10x6	2"	7996-2	4 rows of 3 = 12	
EXB-8126 N34	8x12x6	3"	17619	4 rows of 3 = 12	
EXB-8128 N34	8x12x8	4"	17619	4 rows of 3 = 12	
EXB-10106 N34	10x10x6	3"	17618	3 rows of 3 = 9	
EXB-10108 N34	10x10x8	5"	17618	3 rows of 3 = 9	
EXB-10146 N34	10x14x6	3"	17617	5 rows of 3 = 15	
EXB-10148 N34	10x14x8	5"	17617	5 rows of 3 = 15	
EXB-12126 N34	12x12x6	3"	7988-1	4 rows of 4 = 16	
EXB-12128 N34	12x12x8	5"	7988-1	4 rows of 4 = 16	
EXB-12186 N34	12x18x6	3"	15515	7 rows of 4 = 28	
EXB-12188 N34	12x18x8	5"	15515	7 rows of 4 = 28	
EXB-12246 N34	12x24x6	3"	7988-4	9 rows of 4 = 36	
EXB-12248 N34	12x24x8	5"	7988-4	9 rows of 4 = 36	
EXB-122412 N34	12x24x12	5"	7988-4	9 rows of 4 = 36	
EXB-12368 N34	12x36x8	5"	17620	14 rows of 4 = 56	
EXB-123610 N34	12x36x10	6"	17620	14 rows of 4 = 56	
EXB-14146 N34	14x14x6	3"	17621	5 rows of 5 = 25	
EXB-14148 N34	14x14x8	5"	17621	5 rows of 5 = 25	
EXB-16166 N34	16x16x6	3"	7995-1	6 rows of 6 = 36	
EXB-16168 N34	16x16x8	5"	7995-1	6 rows of 6 = 36	
EXB-16248 N34	16x24x8	5"	17622	8 rows of 5 = 40	
EXB-162410 N34	16x24x10	6"	17622	8 rows of 5 = 40	
EXB-18186 N34	18x18x6	3"	17623	6 rows of 6 = 36	
EXB-18188 N34	18x18x8	5"	17623	6 rows of 6 = 36	
EXB-18248 N34	18x24x8	5"	15516	9 rows of 7 = 63	
EXB-182410 N34	18x24x10	6"	15516	9 rows of 7 = 63	
EXB-18368 N34	18x36x8	5"	15517	13 rows of 6 = 78	
EXB-183610 N34	18x36x10	6"	15517	13 rows of 6 = 78	
EXB-203611 N34	20x36x11	6"	17596	13 rows of 7 = 91	
EXB-24248 N34	24x24x8	5"	8000-1	9 rows of 9 = 81	
EXB-242410 N34	24x24x10	6"	8000-1	9 rows of 9 = 81	
EXB-24308 N34	24x30x8	5"	20567	9 rows of 7 = 63	
EXB-24368 N34	24x36x8	5"	17624	11 rows of 7 = 77	
EXB-243610 N34	24x36x10	6"	17624	11 rows of 7 = 77	



EXB DIMENSIONS													
CATALOG NUMBER	INTERNAL DIMENSIONS (INCHES)					EXTERNAL DIMENSIONS (INCHES)			MOUNTING DIMENSIONS (INCHES)				
	PAN		AVAILABLE FOR DEVICES			F	G	H	I	J	K	L	M
	A	B	C	D	E								
EXB-664 N34	5	5	5.73	5.73	4.31	10.32	10.32	6.09	N/A	4.00	7.88	N/A	0.19
EXB-684 N34	5	7	5.75	7.75	4.18	10.25	12.25	6.12	N/A	6.00	7.88	N/A	0.19
EXB-6124 N34	5	11	5.75	11.75	4.25	10.69	16.69	7.00	N/A	7.82	7.88	N/A	0.19
EXB-886 N34	7	7	7.59	7.59	6.06	12.32	12.32	8.09	N/A	6.00	9.88	N/A	0.19
EXB-8104 N34	7	9	7.73	9.73	4.06	12.32	14.32	6.32	N/A	8.00	9.88	N/A	0.19
EXB-8106 N34	7	9	7.59	9.59	6.06	12.32	14.32	8.32	N/A	8.00	9.88	N/A	0.19
EXB-8126 N34	7	11	8	12	6.38	13.25	17.25	8.70	3.82	7.82	10.38	14.38	0.19
EXB-8128 N34	7	11	8	12	8.38	13.25	17.25	10.70	3.82	7.82	10.38	14.38	0.19
EXB-10106 N34	9	9	10	10	6.20	15.25	15.25	8.90	4.94	4.94	12.94	12.94	0.25
EXB-10108 N34	9	9	10	10	8.20	15.25	15.25	10.90	4.94	4.94	12.94	12.94	0.25
EXB-10146 N34	9	13	10	14	6.20	15.25	19.25	8.90	4.94	8.94	12.94	16.94	0.25
EXB-10148 N34	9	13	10	14	8.20	15.25	19.25	10.90	4.94	8.94	12.94	16.94	0.25
EXB-12126 N34	10.5	10.5	11.5	11.5	6.00	16.38	16.38	8.69	6.94	6.94	14.94	14.94	0.25
EXB-12128 N34	10.5	10.5	11.37	11.37	8.00	16.38	16.38	10.69	6.94	6.94	14.94	14.94	0.25
EXB-12186 N34	10	16	11.5	17.5	6.00	16.38	22.38	9.06	6.94	12.88	14.94	20.88	0.25
EXB-12188 N34	10	16	11.37	17.37	8.00	16.38	22.38	11.06	6.94	12.88	14.94	20.88	0.25
EXB-12246 N34	10.25	22.25	11.5	23.5	6.00	16.38	28.38	9.32	6.94	18.88	14.94	26.88	0.25
EXB-12248 N34	10.25	22.25	11.37	23.37	8.00	16.38	28.38	11.32	6.94	18.88	14.94	26.88	0.25
EXB-122412 N34	10.25	22.25	11.37	23.37	12.00	16.38	28.38	15.32	6.94	18.88	14.94	26.88	0.25
EXB-12368 N34	11	35	12	36	8.12	17.25	41.25	11.40	7.00	31.00	15.00	39.00	0.25
EXB-123610 N34	11	35	12	36	10.12	17.25	41.25	13.40	7.00	31.00	15.00	39.00	0.25
EXB-14146 N34	13	13	14	14	6.20	19.25	19.25	9.40	9.00	9.00	17.00	17.00	0.25
EXB-14148 N34	13	13	14	14	8.20	19.25	19.25	11.40	9.00	9.00	17.00	17.00	0.25
EXB-16166 N34	14	14	15.5	15.5	6.00	20.38	20.38	9.19	10.94	10.94	18.94	18.94	0.25
EXB-16168 N34	14	14	15.37	15.37	8.00	20.38	20.38	11.19	10.94	10.94	18.94	18.94	0.25
EXB-16248 N34	15	23	16	24	8.12	21.25	29.25	12.00	11.38	19.38	19.38	27.38	0.25
EXB-162410 N34	15	23	16	24	10.12	21.25	29.25	14.00	11.38	19.38	19.38	27.38	0.25
EXB-18186 N34	17	17	18	18	6.12	23.25	23.25	10.00	13.38	13.38	21.38	21.38	0.25
EXB-18188 N34	17	17	18	18	8.12	23.25	23.25	12.00	13.38	13.38	21.38	21.38	0.25
EXB-18248 N34	16.38	22.13	17.37	23.37	8.00	22.38	28.38	11.75	13.00	19.00	21.00	27.00	0.25
EXB-182410 N34	16.38	22.13	17.23	23.23	10.00	22.38	28.38	13.75	13.00	19.00	21.25	27.00	0.25
EXB-18368 N34	16	34	17.37	35.37	8.00	22.38	40.38	12.38	13.25	31.50	21.00	39.50	0.25
EXB-183610 N34	16	34	17.23	35.23	10.00	22.38	40.38	14.38	13.25	31.50	21.25	39.50	0.25
EXB-203611 N34	18.75	34.75	20.14	36.14	11.13	26.44	42.44	15.56	15.75	31.75	23.75	39.75	0.25
EXB-24248 N34	22.25	22.25	23.37	23.37	8.06	28.38	28.38	12.19	19.50	19.50	27.50	27.50	0.25
EXB-242410 N34	22.25	22.25	23.23	23.23	10.06	28.38	28.38	14.19	19.50	19.50	27.50	27.50	0.25
EXB-24308 N34	23	29	24	30	8.12	29.25	35.25	12.40	19.56	25.56	27.56	33.56	0.25
EXB-24368 N34	23	35	24	36	8.12	29.25	41.25	12.40	19.56	31.56	27.56	39.56	0.25
EXB-243610 N34	23	35	24	36	10.12	29.25	41.25	14.40	19.56	31.56	27.56	39.56	0.25

Full dimensional details are available on .DFX or .DWG format. Contact factory or local representative for details.

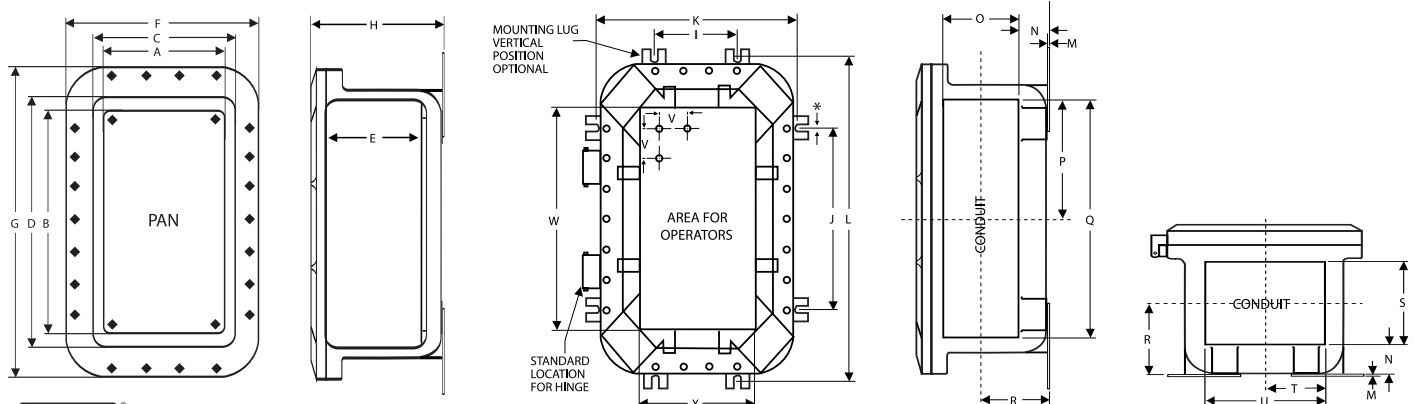


**KILLARK®**

\* Mounting lug opening 7/16" for boxes up to and including 8128 and 9/16" for boxes 10 x 10 and larger

EXB CONDUIT & OPERATOR LAYOUT INFORMATION												
CATALOG NUMBER	CONDUIT AREA								OPERATOR AREA AND SPECS			
	N	O	P	Q	R	S	T	U	V	W	X	
EXB-664 N34	1.18	2.81	2.44	4.88	2.75	2.81	2.44	4.88	2.5	5	5	USE "LONG" STYLE G SERIES OPERATORS
EXB-684 N34	1.18	2.81	3.44	6.88	2.75	2.81	2.44	4.88	2.5	5	7	
EXB-6124 N34	1.18	2.81	5.00	10.00	2.75	2.81	2.44	4.88	2.5	5	11	
EXB-886 N34	1.18	4.81	3.44	6.88	3.75	4.81	3.44	6.88	2.5	7	7	
EXB-8104 N34	1.18	2.81	4.44	8.88	2.75	2.81	3.44	6.88	2.5	9	7	
EXB-8106 N34	1.18	4.18	4.44	8.88	3.45	4.81	3.44	6.88	2.5	9	7	
EXB-8126 N34	1.78	3.75	5	10	3.66	3.75	3	6	2.5	11	7	
EXB-8128 N34	1.78	5.75	5	10	4.66	5.75	3	6	2.5	11	7	
EXB-10106 N34	1.91	3.75	4	8	3.79	3.75	4	8	2.5	9	9	
EXB-10108 N34	1.91	5.75	4	8	4.79	5.75	4	8	2.5	9	9	
EXB-10146 N34	1.91	3.75	6	12	3.79	3.75	4	8	2.5	13	9	
EXB-10148 N34	1.91	5.75	6	12	4.79	5.75	4	8	2.5	13	9	
EXB-12126 N34	1.88	3.81	4.94	9.88	4.00	3.81	4.94	9.88	2.5	10	10	
EXB-12128 N34	1.88	5.81	4.94	9.88	5.00	5.81	4.94	9.88	2.5	10	10	
EXB-12186 N34	2.06	3.13	7.94	15.88	3.88	3.75	4.94	9.88	2.5	16	10	
EXB-12188 N34	2.06	5.13	7.94	15.88	4.88	5.75	4.94	9.88	2.5	16	10	
EXB-12246 N34	2.13	3.13	10.94	21.88	3.94	3.81	4.94	9.88	2.5	22.25	10.25	
EXB-12248 N34	2.13	5.13	10.94	21.88	4.94	5.81	4.94	9.88	2.5	22.25	10.25	
EXB-122412 N34	2.13	9.13	10.94	21.88	6.94	9.81	4.94	9.88	2.5	22.25	10.25	
EXB-12368 N34	2.09	5.75	17	34	4.97	5.75	5	10	2.5	35	11	
EXB-123610 N34	2.09	7.75	17	34	5.97	7.75	5	10	2.5	35	11	
EXB-14146 N34	2.09	3.75	6	12	3.97	3.75	6	12	2.5	13	13	USE "EXTENDED" LENGTH G SERIES OPERATORS
EXB-14148 N34	2.09	5.75	6	12	4.97	5.75	6	12	2.5	13	13	
EXB-16166 N34	2.06	3.75	6.94	13.88	4.18	3.75	6.94	13.88	2.5	14	14	
EXB-16168 N34	2.06	5.75	6.94	13.88	5.18	5.75	6.94	13.88	2.5	14	14	
EXB-16248 N34	2.34	5.75	11	22	5.22	5.75	7	14	2.5	22	14	
EXB-162410 N34	2.34	7.75	11	22	6.22	7.75	7	14	2.5	22	14	
EXB-18186 N34	2.34	3.75	8	16	4.22	3.75	8	16	2.5	16	16	
EXB-18188 N34	2.34	5.75	8	16	5.22	5.75	8	16	2.5	16	16	
EXB-18248 N34	2.32	4.88	10.94	21.88	5.00	5.56	7.94	15.88	2.5	22	16	
EXB-182410 N34	2.32	6.88	10.94	21.88	6.00	8.56	7.94	15.88	2.5	22	16	
EXB-18368 N34	2.50	4.88	16.94	33.88	5.18	6.06	7.94	15.88	2.5	34	16	
EXB-183610 N34	2.50	6.88	16.94	33.88	6.18	8.06	7.94	15.88	2.5	34	16	
EXB-203611 N34	2.47	8.44	16.72	33.97	6.88	8.47	8.72	17.47	2.5	34.88	18.88	
EXB-24248 N34	2.88	5.50	10.88	21.88	5.88	5.50	10.94	21.88	2.5	22	22	
EXB-242410 N34	2.88	7.50	10.88	21.88	6.88	7.50	10.94	21.88	2.5	22	22	
EXB-24308 N34	2.47	5.75	14	28	5.35	5.75	11	22	3.0	28	22	
EXB-24368 N34	2.47	5.75	17	34	5.35	5.75	11	22	3.0	34	22	
EXB-243610 N34	2.47	7.75	17	34	6.35	7.75	11	22	3.0	34	22	

Full dimensional details are available on .DFX or .DWG format. Contact factory or local representative for details.





### Applications

- Locations made hazardous due to the presence of flammable gases or vapors, combustible dust, or easily ignitable fibers and flyings, and areas which are subject to corrosion, weather and dampness
  - Petroleum Refineries, Chemical and Petrochemical plants with indoor and outdoor process
  - Applications requiring junction, pull and/or splice boxes
  - Enclosures to house control stations, relays, starters, circuit breakers, terminal blocks and other equipment or devices
- (Lens viewing windows cannot be added to the Prism Series Enclosures. Use Killark Quantum Enclosures where viewing windows are required.)*

### Features

- Copper-Free Cast Aluminum construction. High strength, lighter in weight, corrosion resistant
- Quick Release, Captivated Cover Bolts of 316 Grade Stainless Steel. Triple-lead bolts require only 3-1/2 turns to disengage. Stainless steel (316 grade) for maximum protection from corrosion



**Class I, Div. 1 & 2,  
Groups B,C,D<sup>①</sup>**  
**Class I, Zone 1 & 2**  
**Groups IIB+H<sub>2</sub>, IIA**  
**Class II, Div. 1 & 2,  
Groups E,F,G**  
**Class III, Div. 1 & 2**  
**NEMA 3, 4, 4X, 7(B,C,D), 9(E,F,G)**

**UL** #UL1203 - Explosion proof and dust-ignition-proof electrical equipment for use in hazardous (classified) locations. File #E83969

**SP** #C22.2 No. 30-M1986-Explosion-proof Enclosure for use in Class I Hazardous Locations. FILE #LR11716

### FEATURES-SPECIFICATIONS

- Gasketed Flange. Nitrile (BUNA-N) "O" ring gasket is located inside bolt circle to prevent water seeping into enclosure
- Ductile Mounting Lugs. Lugs are made of ductile aluminum alloy to adjust to irregular mounting surfaces without damage to enclosure
- Hinged Cover is Standard
- Recessed Flange Notches. Flanges are notched to allow for easier cover opening with prying instrument without flange damage

- Conduit Openings. Conduit openings can be supplied at factory, or can be field installed. See page E34

### Material/Finish

- Enclosure: Cast Copper-free Aluminum (less than 4/10 of 1%)
- Hinges: Aluminum with stainless steel hardware
- Cover Bolts: 316 Grade Stainless Steel
- Aluminum Lacquer Paint Finish Standard

**E**

### B7E JUNCTION BOXES AND ENCLOSURES

CATALOG NUMBER	DIMENSIONS (SEE PAGE E14)								DRAWING FIGURE	MAXIMUM CONDUIT SIZE		MAXIMUM NUMBER OF OPERATORS <sup>②</sup>
	NOMINAL INSIDE			OUTSIDE			MOUNTING			TOP & BOTTOM	SIDES	
	WIDTH (A)	LENGTH (B)	DEPTH (C)	WIDTH (D)	LENGTH (E)	DEPTH (F)	WIDTH (G)	LENGTH (H)				
B7EA	6-1/2"	13-1/2"	6-11/16"	11"	18"	9-1/8"	3-5/8"	16-3/8"	1	1-1/2"	1"	4 rows of 2 = 8
B7EB	10"	18-1/2"	6-5/8"	14-1/2"	23"	9-1/8"	7"	21-3/8"	1	1-1/2"	1"	7 rows of 3 = 21
B7EC	8"	15 1/2"	6-11/16"	12-1/2"	20"	9-1/8"	5"	18-3/8"	1	1-1/2"	1"	5 rows of 2 = 10
B7ED	10"	21"	6-11/16"	14-1/2"	25-1/2"	9-1/8"	7"	23-7/8"	1	1-1/2"	1"	8 rows of 3 = 24
B7EE	8"	21-3/4"	8-5/16"	12-1/2"	26-1/4"	10-3/4"	5"	24-5/8"	1	2"	2"	8 rows of 2 = 16
B7EF	13"	22-3/4"	8-3/8"	17-7/8"	27-1/4"	11"	10-3/8"	25-5/8"	1	4"	4"	8 rows of 4 = 32
B7EG	12"	29-3/4"	8-7/8"	16-1/2"	34-1/4"	11-1/2"	9"	32-5/8"	1	5"	4"	8 rows of 3 = 24
B7EH	17"	29-3/4"	8-11/16"	21-1/2"	34-1/4"	11-7/8"	14"	32-5/8"	1	5"	4"	9 rows of 5 = 45
B7EJ	15-1/2"	57-1/2"	9-5/16"	20-1/4"	62-1/4"	15"	18-1/2"	43-1/2"	2	5"	5"	18 rows of 4 = 72
B7EK	13"	20"	6-5/8"	17-1/2"	24-3/4"	9-1/2"	15-1/4"	13"	2	3"	1-1/2"	6 rows of 4 = 24
B7EL	13"	29"	6-5/8"	17-1/2"	33-3/8"	9-1/2"	15-1/4"	21"	2	3"	1-1/2"	9 rows of 4 = 36
B7EM	13"	41"	6-5/8"	17-1/2"	45-3/8"	9-1/2"	15-1/4"	33"	2	3"	1-1/2"	14 rows of 4 = 56
B7EN	13"	50"	6-5/8"	17-1/2"	54-3/8"	9-1/2"	15-1/4"	42"	2	3"	1-1/2"	17 rows of 4 = 68

<sup>①</sup>All Conduits must be sealed within 18" when used in Group B Locations.

<sup>②</sup>Operator spacing is 2-1/2" ~~to~~ except on B7EG & B7EH spacing is 3" ~~to~~ ~~to~~.

Internal Mounting Pan Thickness is 1/8" except on B7EJ it is 3/16" thick.

B7EJ Enclosure Cover has an Internal Rib Structure. Consult Killark for drawing details before layout of cover devices.

Maximum number of "G" series control operators permitted in cover, down + across = total.



**KILLARK®**



## FEATURES-SPECIFICATIONS

B7E JUNCTION BOXES AND ENCLOSURES			
CATALOG NUMBER	PAN <sup>③</sup>		
	CATALOG NUMBER	WIDTH (J)	LENGTH (K)
B7EA	19919	5"	11-3/4"
B7EB	19920	8-1/4"	16-3/4"
B7EC	18245	6-1/4"	13-3/4"
B7ED	19921	8-3/8"	19-3/8"
B7EE	19923	6-3/8"	20-3/8"
B7EF	18472	11-5/8"	21-1/4"
B7EG	19924	10"	28"
B7EH	19925	15-3/8"	28-3/8"
B7EJ	18279	13-1/2"	54"
B7EK	19926	11"	18"
B7EL	19927	11"	27"
B7EM	19928	11"	39"
B7EN	19929	11"	47"

<sup>③</sup> Internal Mounting Pan Thickness is 1/8" except on B7EJ it is 3/16" thick.

MODIFICATIONS	
SUFFIX NUMBER	DESCRIPTION
KIT-251	100 amp ground lug
KIT-252	225 amp ground lug
SU3 <sup>①</sup>	Drain & breather installed (NEMA 7CD)
SU3B <sup>① ②</sup>	Drain & breather installed (NEMA 7BCD)
SU94	"Drill, tap & plug for future" drain & breather
SU9	Special paint finish
SU14	Fungus proofing of enclosure
SU93	Do not paint enclosure

<sup>① ②</sup> The installation of a Drain & Breather will void the NEMA 4-4X rating of enclosure. Not CSA.

Dimensions  
(See page E13)

Figure 1

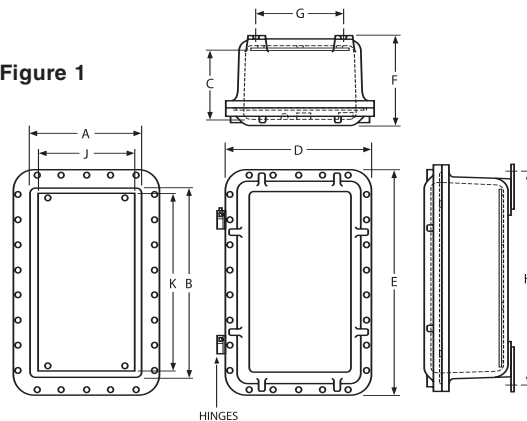
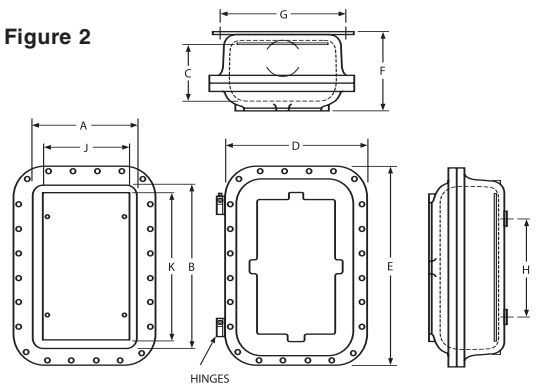


Figure 2





### Applications

- Hazardous locations due to the presence of flammable gases or vapors, combustible dusts or easily ignitable fibers or flyings
- Installations at petroleum refineries, chemical and petrochemical plants, storage areas and other processing facilities where hazardous substances are handled or stored
- Use as a junction or pull box or to enclose control stations, meters, relays, starters, terminals or other equipment or devices

### Features

- Copper-free cast aluminum alloy (less than 4/10 of 1%)
- Cover bolts or plated steel
- Mounting lugs cast as standard
- Hinges are available and can be mounted on either right or left side of box (hinges are mounted on left side unless specified otherwise)
- Mounting pans are available and are 1/8" thick sheet aluminum



**Class I, Div. 1 & 2, Groups C,D\***  
**Class I, Zones 1 & 2, Groups IIB, IIA**  
**Class II, Div. 1 & 2, Groups E,F,G**  
**Class III**  
**NEMA 7(C,D\*) 9(E,F,G)**



LISTED - FILE E10514



CERTIFIED - FILE LR11716



Contact Killark for current approvals.

See files for details or call Killark.

### FEATURES-SPECIFICATIONS

#### Conduit Openings

All boxes are cast with wall thickness suitable for drilling and tapping conduit openings which may be factory or field installed. Drilled and tapped openings can be provided on any of the four sides or the back (size limitations of conduit opening shown with dimensional information). For custom drilled openings refer to

page E34. Drilled and tapped openings may be added in the field, if desired.

#### Modifications

Enclosures are available blank or with factory modifications, options and accessories. See catalog pages E18-23 for additional details.

#### XB JUNCTION BOX ORDERING INFORMATION AND DIMENSIONS

CATALOG NUMBER	NOMINAL INSIDE BOX SIZE			MAXIMUM CONDUIT SIZE	MOUNTING DIMENSIONS			OUTSIDE BOX DIMENSIONS				CATALOG NUMBER		NUMBER OF OPERATORS†
	W	L	D		A	B	C	D	E	G	H	OPTIONAL HINGE TYPE②	OPTIONAL MOUNTING PAN ②	
<b>XB-444</b> ①	4"	4"	4"	2"	2"	5-7/8"	3/8"	6"	6"	4-1/2"	5-1/2"	<b>HINGE-9</b>	<b>9547-1</b>	1 row of 1 = 1
<b>XB-464</b> ①	4"	6"	4"	2"	4"	5-7/8"	3/8"	8"	6"	4-1/2"	5-1/2"	<b>HINGE-9</b>	<b>9547-2</b>	2 rows of 1 = 2
<b>XB-664</b>	6"	6"	4"	2"	4"	7-5/8"	3/8"	8"	8"	4-1/2"	5-1/2"	<b>HINGE-9</b>	<b>7997-5</b>	2 rows of 2 = 4
<b>XB-684</b> ①	6"	8"	4"	2"	6"	7-7/8"	3/8"	10"	8"	4-1/2"	5-3/4"	<b>HINGE-9</b>	<b>7997-1</b>	3 rows of 2 = 6
<b>XB-884</b>	8"	8"	4"	2"	6"	10-7/16"	3/8"	11"	11"	4-5/8"	6"	<b>HINGE-11L</b>	<b>7996-1</b>	3 rows of 3 = 9
<b>XB-886</b>	8"	8"	6"	2"	6"	10-7/16"	3/8"	11"	11"	6-5/8"	8"	<b>HINGE-11L</b>	<b>7996-1</b>	3 rows of 3 = 9
<b>XB-8106</b>	8"	10"	6"	2"	6"	10-1/2"	3/8"	13"	11"	6-5/8"	8"	<b>HINGE-11L</b>	<b>7996-2</b>	3 rows of 3 = 9
<b>XB-10126</b>	10"	12"	6"	2"	6"	12-1/2"	1/2"	15"	13"	6-5/8"	8"	<b>HINGE-11L</b>	<b>7994-1</b>	4 rows of 4 = 16
<b>XB-12168</b>	12"	16"	8"	4"	12"	14-1/2"	1/2"	19"	15"	8-7/8"	10-5/16"	<b>HINGE-11L</b>	<b>7988-2</b>	6 rows of 4 = 24

#### MODIFICATIONS

SUFFIX NUMBER	DESCRIPTION
<b>SU1</b>	Stainless steel cover bolts
<b>SU2</b>	Hinge installed
<b>SU3</b>	Drain and breather installed
<b>KIT-251</b>	100 AMP ground lug
<b>KIT-252</b>	225 AMP ground lug

① Conduits must be sealed within 18" in Group C locations.

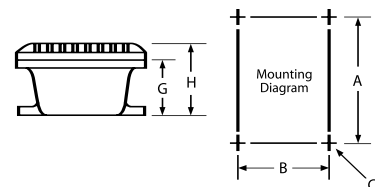
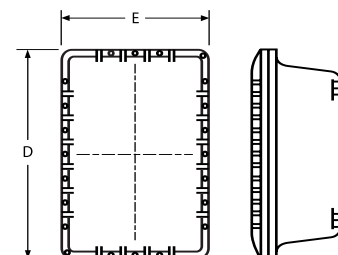
② Hinges or mounting pans not included as standard.

For ordering information see pages E18 and E19.

\* NOTE: Some XB series enclosures suitable for Group D only – contact factory.

† Maximum number of "G" series control operators permitted in cover, down + across = total. Use long style "G" series operators.

#### Dimensions



**KILLARK®**

**Applications**

- Hazardous locations due to the presence of flammable gases or vapors, combustible dusts or easily ignitable fibers or flyings
- Installations at petroleum refineries, chemical and petrochemical plants, storage areas and other processing facilities where hazardous substances are handled or stored
- Use as a junction or pull box or to enclose control stations, meters, relays, starters, terminals or other equipment or devices

**Features**

- Extended cover designed to allow ease of installation and maintenance of enclosed equipment
- Mounting lugs cast as standard
- Copper-free cast aluminum alloy (less than 4/10 of 1%)
- Cover bolts or plated steel
- Hinges are available and can be mounted on either right or left side of box (hinges are mounted on left side unless specified otherwise)
- Mounting pans are 1/8" thick sheet aluminum



**Class I, Div. 1 & 2, Groups C,D\***  
**Class I, Zones 1 & 2, Groups IIB, IIA**  
**Class II, Div. 1 & 2, Groups E,F,G**  
**Class III**  
**NEMA 7(C,D\*) 9(E,F,G)**



Listed - File E10514



Certified - File LR11716



Contact Killark for current approvals.  
 See files for details or call Killark.

**FEATURES-SPECIFICATIONS**

- Enclosures are available blank or with factory modifications, options and accessories. See catalog pages E18-E23 for additional details

tapped openings can be provided on any four sides or back (size limitation of conduit opening shown with dimensional information). For custom drilled openings, refer to page E34.

**Conduit Openings**

All boxes are cast with wall thickness suitable for drilling and tapping of conduit openings which may be factory or field installed. Drilled and

**XJB JUNCTION BOX ORDERING INFORMATION AND DIMENSIONS**

CATALOG NUMBER	NOMINAL INSIDE BOX SIZE			MAXIMUM CONDUIT SIZE	MOUNTING DIMENSIONS			OUTSIDE BOX DIMENSIONS				CATALOG NUMBER		NUMBER OF OPERATORS†
	W	L	D		A	B	C	D	E	G	H	OPTIONAL HINGE TYPE®	OPTIONAL MOUNTING PAN®	
XJB-5106①	5"	10"	6"	1-1/2"	5-3/4"	7-3/32"	3/8"	13-1/4"	8-1/4"	4"	8"	HINGE-9	7998-4	4 rows of 2 = 8
XJB-5136	5"	13"	6"	2"	8-1/4"	7-1/4"	3/8"	15-3/4"	8-1/4"	4"	8"	HINGE-9	7998-5	5 rows of 2 = 10
XJB-8104①	8"	10"	4"	1"	6"	10-9/16"	1/2"	13"	11"	3"	6"	HINGE-9	7996-2	3 rows of 3 = 9

Additional sizes continued on next page.

**MODIFICATIONS**

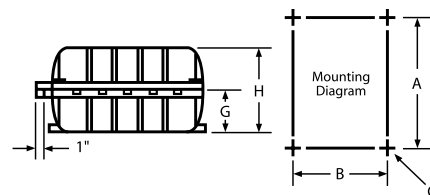
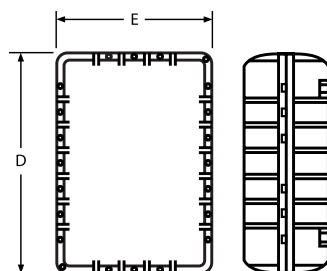
SUFFIX NUMBER	DESCRIPTION
SU1	Stainless steel cover bolts
SU2	Hinge installed
SU3	Drain and breather installed
KIT-251	100 AMP ground lug
KIT-252	225 AMP ground lug

① Conduits must be sealed within 18" in Group C locations.

② Hinges or mounting pans not included as standard.  
 For ordering information see pages E18 and E19.

\* NOTE: Some XJB series enclosures suitable for Group D only - contact factory.

† Maximum number of "G" series control operators permitted in cover, down + across = total. Use long style "G" series operators. Enclosures are available blank or with factory modifications, options and accessories. See catalog pages E18-E23 for additional details.

**Dimensions****KILLARK®**





**Class I, Div. 1 & 2, Groups C,D\***  
**Class I, Zones 1 & 2, Groups IIB, IIA**  
**Class II, Div. 1 & 2, Groups E,F,G**  
**Class III**  
**NEMA 7(C,D\*), 9(E,F,G)**

Listed - File E10514

Certified - File LR11716

APPROVED  
Contact Killark for current approvals.  
See files for details or call Killark.

**FEATURES-SPECIFICATIONS**

XJB JUNCTION BOX ORDERING INFORMATION AND DIMENSIONS														
CATALOG NUMBER	NOMINAL INSIDE BOX SIZE			MAXIMUM CONDUIT SIZE	MOUNTING DIMENSIONS			OUTSIDE BOX DIMENSIONS				CATALOG NUMBER		MAXIMUM NUMBER OF OPERATORS†
	W	L	D		A	B	C	D	E	G	H	OPTIONAL HINGE TYPE②	OPTIONAL MOUNTING PAN②	
XJB-8106①	8"	10"	6"	1-1/2"	6"	10-9/16"	3/8"	13"	11"	4"	8"	HINGE-9	7996-2	3 rows of 3 = 9
XJB-8136①	8"	13"	6"	2"	8-1/2"	10-9/16"	3/8"	16"	11"	4"	8"	HINGE-11L	7996-4	4 rows of 3 = 12
XJB-8156①	8"	15"	6"	2"	11-1/2"	10-9/16"	3/8"	18-1/2"	11"	4"	8"	HINGE-11L	7996-5	5 rows of 3 = 15
XJB-8158①	8"	15"	8"	4"	11-1/2"	10-9/16"	3/8"	18-1/2"	11"	6-1/8"	10-1/4"	HINGE-11L	7996-5	5 rows of 3 = 15
XJB-8186	8"	18"	6"	2"	13-1/2"	10-9/16"	3/8"	21"	11"	4"	8"	HINGE-11L	7996-6	6 rows of 3 = 18
XJB-8188	8"	18"	8"	4"	13-1/2"	10-9/16"	3/8"	21"	11"	6-1/8"	10-1/8"	HINGE-11L	7996-6	6 rows of 3 = 18
XJB-12196①	12"	19"	6"	1-1/2"	14-1/2"	14-1/8"	1/2"	22"	15"	4"	8"	HINGE-11L	7988-3	7 rows of 4 = 28
XJB-12198①	12"	19"	8"	3-1/2"	14-1/2"	14-1/8"	1/2"	22"	15"	6-1/8"	10-1/8"	HINGE-11L	7988-3	7 rows of 4 = 28
XJB-121910①	12"	19"	10"	3-1/2"	14-1/2"	14-1/8"	1/2"	22"	15"	6-1/8"	12-1/4"	HINGE-11L	7988-3	7 rows of 4 = 28
XJB-12248①	12"	24"	8"	3"	19-1/2"	14-5/8"	1/2"	27"	15"	6-1/8"	10-1/8"	HINGE-11L	7988-4	9 rows of 4 = 36
XJB-164812①	16"	48"	12"	4"	43-9/16"	18-1/8"	5/8"	51-1/2"	19-1/2"	7-1/4"	14-1/2"	HINGE-10L	7995-5	18 rows of 6 = 108
XJB-20328①	20"	32"	8"	3-1/2"	27-1/2"	21-7/8"	5/8"	35"	23"	6-1/8"	16-1/4"	HINGE-10L	7999-2	12 rows of 7 = 84
XJB-203210①	20"	32"	10"	3-1/2"	27-1/2"	21-7/8"	5/8"	35"	23"	6-1/8"	12-1/4"	HINGE-10L	7999-2	12 rows of 7 = 84
XJB-204010①	20"	40"	10"	3-1/2"	36"	22-3/4"	5/8"	43-1/2"	23-1/2"	6-1/4"	12-1/2"	HINGE-10L	7999-3	15 rows of 7 = 105
XJB-24248①	24"	24"	8"	2"	19-1/2"	26-7/16"	5/8"	27-1/2"	27-1/2"	6-1/4"	10-3/8"	HINGE-10L	8000-1	9 rows of 9 = 81
XJB-242410①	24"	24"	10"	4"	19-1/2"	26-7/16"	5/8"	27-1/2"	27-1/2"	6-1/4"	12-1/2"	HINGE-10L	8000-1	9 rows of 9 = 81
XJB-242411①	24"	24"	11"	4"	19-1/2"	26-7/16"	5/8"	27-1/2"	27-1/2"	9-1/4"	13-3/8"	HINGE-10L	8000-1	9 rows of 9 = 81
XJB-242416①	24"	24"	16"	4"	19-1/2"	26-7/16"	5/8"	27-1/2"	27-1/2"	9-1/4"	18-1/2"	HINGE-10L	8000-1	9 rows of 9 = 81

① Conduits must be sealed within 18" in Group C locations.

② Hinges or mounting pans not included as standard.

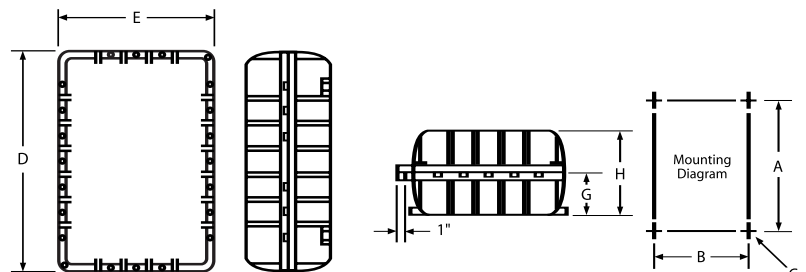
For ordering information see pages E18 and E19.

\* NOTE: Some XJB series enclosures suitable for Group D only - contact factory.

† Maximum number of "G" series operators permitted in cover, down + across = total.

Use long style "G" series operators.

**Dimensions**



**EXB, XB and XJB Series Mounting Pans Ordering Instructions**

Select proper mounting pan based on inside (length & width) of box. Order and price as separate item from junction box catalog number.

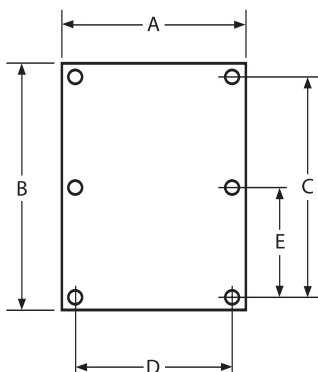
EXAMPLE: XB-12128 } assemble  
7988-1

EXB, XB and XJB Series boxes have cast bosses which are drilled and tapped for direct mounting when pans are ordered.

Mounting pans are 1/8" thick sheet aluminum and are sized to provide the maximum usable surface area when installed.

Mounting pans are installed at no additional charge when ordered with box.

All EXB-XB-XJB series boxes have internal bosses that are factory machined to accept mounting pans.

**Dimensions**


EXB, XB, XJB MOUNTING PAN								
CATALOG NUMBER	NOMINAL INSIDE BOX SIZE		MOUNTING PAN DIMENSION		MOUNTING HOLE SPACINGS			PAN THICKNESS
	WIDTH	LENGTH	A WIDTH	B LENGTH	C	D	E	
9547-1	4"	4"	3"	3"	2"	2"	—	.125
9547-2	4"	6"	3"	5"	4"	2"	—	.125
7998-4	5"	10"	4-1/2"	9"	6-29/32"	3"	—	.125
7998-5	5"	13"	4-1/2"	12"	10"	2"	—	.125
7997-5	6"	6"	5"	5"	3"	3"	—	.125
7997-1	6"	8"	5"	7"	5"	3"	—	.125
7997-6	6"	12"	5"	11"	9"	3"	—	.125
7996-1	8"	8"	7"	7"	5"	5"	—	.125
7996-2	8"	10"	7"	9"	7"	5"	—	.125
17619	8"	12"	7"	11"	9"	5"	—	.125
7996-4	8"	13"	7"	12"	10"	5"	—	.125
7996-5	8"	15"	7"	14-1/2"	12-1/2"	5"	—	.125
7996-6	8"	18"	7"	17"	15-1/8"	5"	—	.125
7994-1	10"	12"	9"	11"	9"	7"	—	.125
17617	10"	14"	9"	13"	11"	7"	—	.125
17618	10"	10"	9"	9"	7"	7"	—	.125
7988-1	12"	12"	10-1/2"	10-1/2"	9"	9"	—	.125
7988-2	12"	16"	10-1/2"	14-1/2"	13"	9"	—	.125
15515	12"	18"	10"	16"	15"	9"	7-1/2"	.125
7988-3	12"	19"	10-1/2"	17-1/2"	16"	9"	—	.125
7988-4	12"	24"	10-1/4"	22-1/4"	21"	9"	—	.125
17620	12"	36"	11"	35"	33"	9"	17-1/2"	.125
17621	14"	14"	13"	13"	11"	11"	—	.125
7995-1	16"	16"	14"	14"	13"	13"	—	.125
7995-2	16"	24"	14-1/2"	23"	21"	13"	—	.125
17622	16"	24"	15"	23"	21"	13"	—	.125
7995-5	16"	48"	14-1/2"	46-1/2"	45"	13"	22-1/2"	.190
17623	18"	18"	17"	17"	15"	15"	—	.190
15516	18"	24"	16-3/8"	22-1/8"	21"	15"	10-1/2"	.125
15517	18"	36"	34"	16"	33"	15"	16-1/2"	.125
7999-1	20"	24"	18-1/2"	22-1/2"	21"	17"	—	.125
7999-2	20"	32"	18-1/2"	30-1/2"	29"	17"	14-1/2"	.190
17596	20"	36"	18-3/4"	34-3/4"	32-3/4"	16-3/4"	16-3/8"	.190
7999-3	20"	40"	18-1/2"	39"	37"	17"	18-1/2"	.190
8000-1	24"	24"	22-1/4"	22-1/4"	21"	21"	—	.125
17624	24"	36"	23"	35"	33"	21"	16-1/2"	.190
205767	24"	30"	23"	29"	27"	21"	13-1/2"	.190

**DB Series Mounting Pans Ordering Instructions**

Select proper mounting pan based on outside (length & width) of box. Order and price as separate item from the junction box catalog number.

EXAMPLE: DB-10106 } assemble  
6248-10

DB Series boxes are provided with 1/2" raised mounting studs threaded into the back when pans are ordered. If a mounting pan is not ordered, mounting studs can still be provided by adding SU8 to box catalog number. See price list for SU8 pricing information.

DB MOUNTING PAN								
6307-6	6"	6"	4"	4"	3"	3"	—	.125
6307-12	6"	12"	4"	10"	8-1/2"	3"	—	.125
6247-8	8"	8"	5"	5"	3-1/4"	3-1/4"	—	.125
6247-10	8"	10"	5"	7"	5-1/4"	3-1/4"	—	.125
6247-14	8"	14"	5"	11"	9-1/4"	3-1/4"	—	.125
6247-18	8"	18"	5"	15"	13-1/4"	3-1/4"	—	.125
6248-10	10"	10"	7"	7"	5-1/4"	5-1/4"	—	.125
6248-14	10"	14"	7"	11"	9-1/4"	5-1/4"	—	.125
6249-14	12"	14"	9"	11"	9-1/4"	7-1/4"	—	.125
6249-16	12"	16"	9"	13"	11-1/4"	7-1/4"	—	.125
6249-18	12"	18"	9"	15"	13-1/4"	7-1/4"	—	.125
6249-24	12"	24"	9"	21"	19-1/4"	7-1/4"	—	.125
6250-18	16"	18"	13"	15"	13-1/4"	11-1/4"	—	.125
6250-24	16"	24"	13"	21"	19-1/4"	11-1/4"	—	.125
6250-36	16"	36"	13"	33"	31-1/4"	11-1/4"	15-5/8"	.125
6251-24	20"	24"	17"	21"	19-1/4"	15-1/4"	—	.125
6251-30	20"	30"	17"	27"	25-1/4"	15-1/4"	—	.125
6252-30	24"	30"	18-3/4"	24-3/4"	23"	17"	—	.125
6252-36	24"	36"	18-3/4"	30-3/4"	29"	17"	14-1/2"	.190





HINGE 4 &amp; 9 Stainless Steel

HINGE-10L and HINGE-10R  
HINGE-11L and HINGE-11R  
Extruded AluminumKDB-1  
Drain or  
breatherKB1B  
Breather  
(Group B)KB1D  
Drain  
(Group B)GL/GLX Series  
Lens Cover

## FEATURES-SPECIFICATIONS

## HINGE

## Applications

Hinges are installed on flanged enclosures to allow for easier and safer installation and when performing maintenance on internal components.

HINGES		
CATALOG NUMBER	SERIES USED	MATERIAL
HINGE-4	DB	Stainless steel
HINGE-9	EXB, XB, XJB	Stainless steel
HINGE-10L	EXB, XB, XJB; Larger sizes	Extruded aluminum
HINGE-10R		Extruded aluminum
HINGE-11L	EXB, XB, XJB, DB	Extruded aluminum
HINGE-11R		Extruded aluminum

NOTE: Hinge 4 & 9 are single hinge and two required per enclosure.

- Hinge 10L-10R-11L-11R include two hinges
- Hinge 10L & 11L are for mounting on left side of enclosure
- Hinge 10R & 11R are for mounting on right side of enclosure
- All hinges supplied with stainless steel mounting screws and pins

KD/KB  
DRAINS & BREATHERS

## Applications

When installed in the top of an enclosure, these fittings act as breathers. Bottom installations permit water to drain from the enclosure continuously. All drains and breathers are designed for use in 1/2" hubs or 1/2" drilled and tapped conduit openings.

DRAINS AND BREATHERS	
CATALOG NUMBER	SUITABILITY
KDB-1 ① ③	Class I, Div. 1 & 2, Groups C, D Class II, Div. 1 & 2, Groups E, F, G Class III
KB1B ② ③	Class I, Div. 1 & 2, Groups B, C, D Class II, Div. 1 & 2, Groups E, F, G Class III, NEMA 3
KB1D ② ③	Class I, Div. 1 & 2, Groups B, C, D Class II, Div. 1 & 2, Groups E, F, G Class III, NEMA 3

① U.L. Listed and CSA Certified.

② U.L. Listed only

③ FM Approved

GL/GLX ROUND GLASS  
LENS COVERS  
(MUST BE FACTORY  
INSTALLED)

## Applications

Use GL Series lens on:

- All EXB Boxes
- XB Boxes with 12" width
- XJB 16" x 48" and XJB 24" x 24"

Use GLX Series lens on:

- All DB Boxes
- XB Boxes with 4", 6", 8", 10" width
- All XJB Boxes except 16" x 48" and 24" x 24"

Refer to recommended minimum spacing table. Series GL and GLX have identical viewing lens diameter and outside diameter. The difference is in the thread pitch.

LENS COVER ASSEMBLIES			
CATALOG NUMBER		VIEWING DIAMETER	OUTSIDE DIAMETER
GL SERIES	GLX SERIES		
GL-275	GLX-275	2-3/4"	4-5/8"
GL-300	GLX-300	2-61/64"	5-1/4"
GL-375	GLX-375	3-45/64"	6-1/4"
GL-537	GLX-537	5-3/8"	7-7/8"
GL-600	GLX-600	6"	8-7/8"
GL-775	GLX-775	7-3/4"	10-1/4"

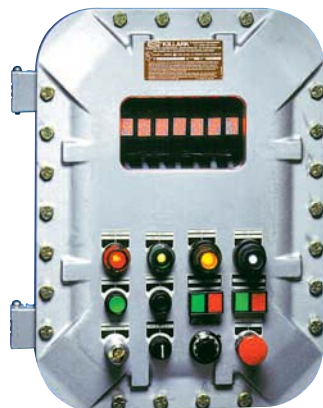
## GL/GLX RECOMMENDED MINIMUM SPACING — CENTERLINE TO CENTERLINE

GLASS LENS TYPE	GL/GLX-275	GL/GLX-300	GL/GLX-375	GL/GLX-537	GL/GLX-600	GL/GLX-775
GL/GLX-275	7.0	7.5	7.75	8.75	9.0	10.0
GL/GLX-300	7.5	8.0	8.25	9.25	9.5	10.5
GL/GLX-375	7.75	8.25	8.5	9.5	9.75	10.75
GL/GLX-537	8.75	9.25	9.5	10.5	10.75	11.75
GL/GLX-600	9.0	9.5	9.75	10.75	11.0	12.0
GL/GLX-775	10.0	10.5	10.75	11.75	12.0	13.0

Note: For spacing less than minimum in table, (shown in inches) consult factory.



KILLARK®



## FEATURES-SPECIFICATIONS

### Applications

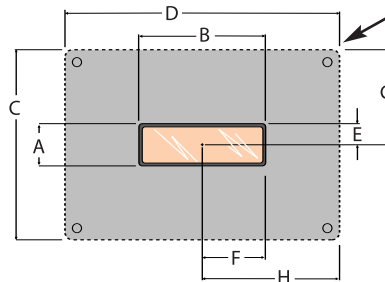
Rectangular glass lens windows can be factory installed to enable viewing of digital read out meters and devices such as:

- Volt meters
- Flow meters
- Gas analyzers
- Process receivers, transmitters and controllers

### Ordering Information

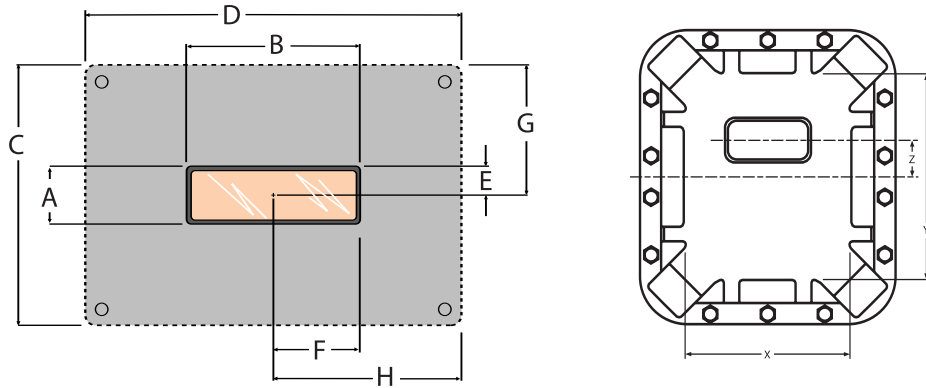
Rectangular lens option must be factory installed and ordered in conjunction with appropriate EXB Series enclosure. See page E21. Submit drawing or sketch to specify lens location. Consult factory for multi-lens arrangements.

GLXR RECTANGULAR LENS COVER ASSEMBLIES								
CATALOG NUMBER	VIEWING AREA		MINIMUM SPACE		OTHER DIMENSIONS			
	A	B	C	D	E	F	G	H
GLXR13	1"	3"	4.5"	6.5"	.5"	1.5"	2.25"	3.25"
GLXR24	2"	4"	5.5"	7.5"	1"	2"	2.75"	3.75"
GLXR27	2"	7"	5.5"	10.5"	1"	3.5"	2.75"	5.25"
GLXR34	3.5"	4"	7"	7.5"	1.75"	2"	3.5"	3.75"
GLXR36	3"	6"	6.5"	9.5"	1.5"	3"	3.25"	4.75"
GLXR47	4"	7"	7.5"	10.5"	2"	3.5"	3.75"	5.25"
GLXR59	5"	9"	8.5"	12.5"	2.5"	4.5"	4.25"	6.25"
GLXR99	9"	9"	12.5"	12.5"	4.5"	4.5"	6.25"	6.25"



(4) #8-32 Internal mounting holes for customer supplied metal brackets. Used to mount meters or other internal components to inside of cover.





**FEATURES-SPECIFICATIONS**

GLXR LAYOUT GUIDE										
CATALOG NUMBER	USEABLE COVER AREA		Z = MAXIMUM CENTER LINE OF COVER TO CENTERLINE OF GLASS LENS							
	X	Y	GLXR13	GLXR24	GLXR27	GLXR34	GLXR36	GLXR47	GLXR59	GLXR99
EXB-664 N34	5"	5"	N	N	N	N	N	N	N	N
EXB-886 N34	7"	7"	1-1/4"	3/4"	N	N	N	N	N	N
EXB-8104 N34	7"	9"	2-1/4"	1-3/4"	N	1"	N	N	N	N
EXB-8106 N34	7"	9"	2-1/4"	1-3/4"	N	1"	N	N	N	N
EXB-8126 N34	7"	11"	3-1/4"	2-3/4"	R •	2"	R •	N	N	N
EXB-8128 N34	7"	11"	3-1/4"	2-3/4"	R •	2"	R •	N	N	N
EXB-10106 N34	9"	9"	2-1/4"	1-3/4"	N	1"	N	N	N	N
EXB-10108 N34	9"	9"	2-1/4"	1-3/4"	N	1"	N	N	N	N
EXB-10146 N34	9"	13"	4-1/4"	3-3/4"	R	3"	R	R	R	N
EXB-10148 N34	9"	13"	4-1/4"	3-3/4"	R	3"	R	R	R	N
EXB-12126 N34	10"	10"	2-3/4"	2-1/4"	2-1/4"	1-1/2"	1-3/4"	1-1/4"	N	N
EXB-12128 N34	10"	10"	2-3/4"	2-1/4"	2-1/4"	1-1/2"	1-3/4"	1-1/4"	N	N
EXB-12186 N34	10"	16"	5-3/4"	5-1/4"	5-1/4"	4-1/2"	4-3/4"	4-1/4"	R •	N
EXB-12188 N34	10"	16"	5-3/4"	5-1/4"	5-1/4"	4-1/2"	4-3/4"	4-1/4"	R •	N
EXB-12246 N34	10-1/4"	22-1/4"	8-7/8"	8-3/8"	8-3/8"	7-5/8"	7-7/8"	7-3/8"	R	N
EXB-12248 N34	10-1/4"	22-1/4"	8-7/8"	8-3/8"	8-3/8"	7-5/8"	7-7/8"	7-3/8"	R	N
EXB-122412 N34	10-1/4"	22-1/4"	8-7/8"	8-3/8"	8-3/8"	7-5/8"	7-7/8"	7-3/8"	R	N
EXB-12368 N34	11"	35"	15-1/4"	14-3/4"	14-3/4"	14"	14-1/4"	13-3/4"	R •	N
EXB-123610 N34	11"	35"	15-1/4"	14-3/4"	14-3/4"	14"	14-1/4"	13-3/4"	R •	N
EXB-14146 N34	13"	13"	4-1/4"	3-3/4"	3-3/4"	3"	3-1/4"	2-3/4"	2-1/4"	*
EXB-14148 N34	13"	13"	4-1/4"	3-3/4"	3-3/4"	3"	3-1/4"	2-3/4"	2-1/4"	*
EXB-16166 N34	14"	14"	4-3/4"	4-1/4"	4-1/4"	3-1/2"	3-3/4"	3-1/4"	2-3/4"	3/4"
EXB-16168 N34	14"	14"	4-3/4"	4-1/4"	4-1/4"	3-1/2"	3-3/4"	3-1/4"	2-3/4"	3/4"
EXB-16248 N34	14"	22"	8-3/4"	8-1/4"	8-1/4"	7-1/2"	7-3/4"	7-1/4"	6-3/4"	4-3/4"
EXB-162410 N34	14"	22"	8-3/4"	8-1/4"	8-1/4"	7-1/2"	7-3/4"	7-1/4"	6-3/4"	4-3/4"
EXB-18186 N34	16"	16"	5-3/4"	5-1/4"	5-1/4"	4-1/2"	4-3/4"	4-1/4"	3-3/4"	1-3/4"
EXB-18188 N34	16"	16"	5-3/4"	5-1/4"	5-1/4"	4-1/2"	4-3/4"	4-1/4"	3-3/4"	1-3/4"
EXB-18248 N34	16"	22"	8-3/4"	8-1/4"	8-1/4"	7-1/2"	7-3/4"	7-1/4"	6-3/4"	4-3/4"
EXB-182410 N34	16"	22"	8-3/4"	8-1/4"	8-1/4"	7-1/2"	7-3/4"	7-1/4"	6-3/4"	4-3/4"
EXB-18368 N34	16"	34"	14-3/4"	14-1/4"	14-1/4"	12-1/2"	13-3/4"	12-1/4"	11-3/4"	10-3/4"
EXB-183610 N34	16"	34"	14-3/4"	14-1/4"	14-1/4"	12-1/2"	13-3/4"	12-1/4"	11-3/4"	10-3/4"
EXB-203611 N34	18-7/8"	34-7/8"	15-3/16"	14-11/16"	14-11/16"	13-15/16"	14-3/16"	13-11/16"	13-3/16"	11-3/16"
EXB-24248 N34	22"	22"	8-3/4"	8-1/4"	8-1/4"	7-1/2"	7-3/4"	7-1/4"	6-3/4"	4-3/4"
EXB-242410 N34	22"	22"	8-3/4"	8-1/4"	8-1/4"	7-1/2"	7-3/4"	7-1/4"	6-3/4"	4-3/4"
EXB-24368 N34	22"	34"	14-3/4"	14-1/4"	14-1/4"	12-1/2"	13-3/4"	12-1/4"	12-3/4" •	10-3/4"
EXB-243610 N34	22"	34"	14-3/4"	14-1/4"	14-1/4"	12-1/2"	13-3/4"	12-1/4"	12-3/4" •	10-3/4"

Symbols: N = Enclosure will not accommodate this lens size

R = Rotate lens 90°, consult factory for layout assistance

• = Voids UL/CSA/CENELEC certifications

\* = Indicates center line



**KILLARK®**



CBH



EXH

## FEATURES-SPECIFICATIONS

### Applications

CBH Series circuit breaker handles are for use with the following Series of Killark enclosures: XB, XJB, DB.

- These devices may be used to activate circuit breakers, motor circuit protectors, and nonfusible disconnects
- Complete handle mechanisms include external handle and lockout, internal switching mechanism, and adjustable shaft
- Consult factory for installation data, and hazardous location suitability

CBH CIRCUIT BREAKER HANDLES							
CATALOG NUMBER						CIRCUIT BREAKER FRAME TYPE	
COMPLETE ASSEMBLY <sup>①</sup>	MOUNTING PAN <sup>②</sup>	SHAFT				CUTLER HAMMER	SQUARE D
		FOR 6" DEEP BOX	FOR 8" DEEP BOX	FOR 12" DEEP BOX	FOR 20" DEEP BOX		
CBH-114	CBH-1P	CBH-6S	CBH-8S	CBH-12S	CBH-20S	EHD, FDB, FD, HFD, FDC, HMCP-150	—
CBH-118	CBH-1P	CBH-6S	CBH-8S	CBH-12S	CBH-20S	—	FAL, FHL
CBH-120	CBH-1P	CBH-6S	CBH-8S	CBH-12S	CBH-20S	30, 60 Amp N.F. Switch	—
CBH-213	CBH-3P	CBH-6S	CBH-8S	CBH-12S	CBH-20S	DK, KDB, KD, HKD, KDC, HMCP-250	—
CBH-216	CBH-3P	CBH-6S	CBH-8S	CBH-12S	CBH-20S	JDB, JD, HJD, JDC, HMCP-250	—

① CBH-114 thru CBH-120 provided with CBH-6S shaft. CBH-213 thru CBH-216 provided with CBH-8S shaft.

② Breaker mounting pan is not included in complete assembly.

### Circuit Breaker Handles

For use with enclosure type B7E-DB-EXB-XB-XJB

- Used to activate circuit breakers and motor circuit protectors from front cover
- Factory or field installed in a 3/4" NPSM opening for EXH1 & EXH2 and a 1-1/4" NPSM for EXH3
- Has provision for Lock-On and Lock-Off with up to three padlocks
- Consists of an external handle mechanism with through-the-enclosure shaft and internal toggle mechanism and breaker pan

Submit sketch showing the desired location of internal breaker for factory location of handle mechanism.

Order as separate option with enclosure for factory installation or by Catalog Number for field installation.

Consult factory for handle mechanism for fused and non-fused disconnect switches.

EXH CIRCUIT BREAKER HANDLE WITH SHAFT AND PAN					
CATALOG NUMBER			BREAKER MANUFACTURER	BREAKER FRAMES TO OPERATE	MAX. AMPS
6" DEEP BOX	8" DEEP BOX	10" DEEP BOX			
EXH1A6	EXH1A8	EXH1A10	GE	TEB-TED-THED-TEL	150
			ITE/Siemens	ED2-ED4-ED6-HED4-HED6	125
			Square D	FAL-FHL-FCL	100
			Cutler Hammer	EHD-FDB-FD-HFD-FDC-HMCP	150
N/A	EXH1B8	EXH1B10	GE	TFJ-TFK-THFK-TFL	225
			Square D	KAL-KHL-KCL	250
			Cutler Hammer	JDB-JD-HJD-JDC	250
N/A	EXH2C8	EXH2C10	Cutler Hammer	DK-KDB-KD-HKD-KDC	400
N/A	EXH3D8	EXH3D10	GE	TJJ-TJK4-TJK6-THJK4-THJK6	600
			ITE/Siemens	FXD6-FD6-HFD6-CFD6	250
			ITE/Siemens	JXD2-JXD6-JD6-HJD6-HHJD6-CJD6	400
			ITE/Siemens	LXD6-LD6-HKD6-HHLD6-CLD6	600
			Square D	LAL-LHL	400
			Cutler Hammer	LDB-LD-HLD-LDC	600
N/A	N/A	EXH3E10	GE	TKM8-THKM8-TKM12-THKM12	1200
			ITE/Siemens	MXD6-MD6-HMXD6-HMD6-CMD6	800
			ITE/Siemens	NXD6-ND6-HNXD6-HND6-CND6	1200
			Square D	LCL	600
			Square D	MAL-MHL	1000
			Cutler Hammer	ND-HND-NDC	1200





**Terminal Block**



**External Control Operators**  
(See Pages C40-C46)

**FEATURES-SPECIFICATIONS**

**600 Volt –#8–#22 CU; #8–#12 AL.  
50 Amp Maximum**

**Applications**

Mounting in EXB, XB, XJB, GR, DB Series junction boxes.

- Use in connecting and in arrangement of control wiring for control panel and switchboard applications

**Features**

- Terminal blocks have clamping screw-type terminals which accommodate either aluminum or copper wire. TMS marking strips are included.
- No additional installation charge is made for mounting terminal blocks in EXB, XB, XJB, GR, DB Series junction boxes. Order as separate item and state that the terminal blocks are to be assembled in junction box.
- When more than one terminal strip is required, a mounting pan should be used for ease of mounting and wiring

$$C = .625 + (1.3125 \times N)$$

$$L = 1.250 + (1.3125 \times N)$$

N = NUMBER OF BLOCKS

**External Control Operators**

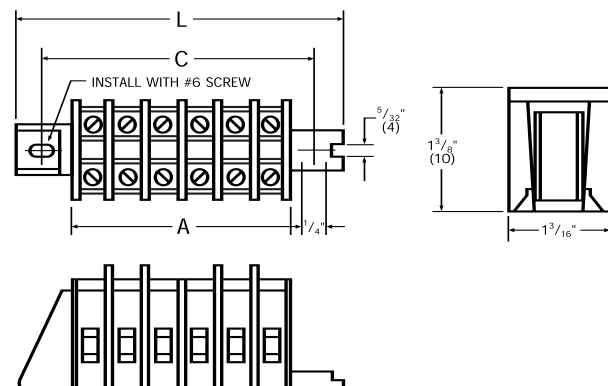
- Custom control panels possible by factory or field installation of Killark "G" series control operators
- Select from a wide variety of push buttons, pilot-lights, selector switches, potentiometer operators and motor shaft rotary operators
- Refer to catalog page C40 for operator selection

TBWE TERMINAL BLOCKS				
CATALOG NUMBER	NO. OF CIRCUITS	DIMENSIONS		
		A	C	L
TBWE-3	3	1.25	1-7/8"	2-1/2"
TBWE-6	6	2.50	3-1/8"	3-3/4"
TBWE-9	9	3.75	4-3/8"	5"
TBWE-12	12	5.0	5-5/8"	6-1/4"
TBWE-15	15	6.25	6-7/8"	7-1/2"
TBWE-18	18	7.50	8-1/8"	8-3/4"
TBWE-21	21	8.75	9-3/8"	10"
TBWE-24	24	10.0	10-5/8"	11-1/4"
TBWE-27	27	11.25	11-7/8"	12-1/2"
TBWE-30	30	12.50	13-1/8"	13-3/4"
TBWE-33	33	13.75	14-3/8"	15"
TBWE-36	36	15.0	15-5/8"	16-1/4"
TBWE-39	39	16.25	16-7/8"	17-1/2"
TBWE-42	42	17.5	18-1/8"	18-3/4"
TBWE-45	45	18.75	19-3/8"	20"
TBWE-48	48	20.0	20-5/8"	21-1/4"
TBWE-51	51	21.25	21-7/8"	22-1/2"
TBWE-54	54	22.50	23-1/8"	23-3/4"
TBWE-57	57	23.75	24-3/8"	25"
TBWE-60	60	25.0	25-5/8"	26-1/4"

*Cutler Hammer TypeTBA Modular Terminal Blocks*

*600 Volt-#8–#22 CU.; #8–#12 AL.*

*Clamping Screw Type Terminals, Type TMS Marking Strip Included*





## ATEX / IEC Ex Certified



**Class I, Div. 1 & 2, Groups B,C,D**  
**Class I, Zones 1 & 2, Groups IIB+H<sub>2</sub>, IIA**  
**Class II, Div. 1 & 2, Groups E,F,G**  
**Class III, Div. 1 & 2**  
**NEMA 3, 4, 4X, 7(B,C,D), 9(E,F,G)**  
**CENELEC/ATEX/IEC Ex**  
**EExd IIC T6 or T5**  
**IP66 T80°C or T90°C**  
**Ex d IIC T6 or T5**  
**Ex tD A21 IP66 T80°C or T90°C**



#UL886 - Outlet Boxes and Fittings for use in Hazardous (Classified) Locations. File #E10514



#UL1203 - Explosion Proof and Dust Ignition Proof Electrical Equipment. File #E83969



#C22.2 No. 30-M1986 - Explosion Proof Enclosure for use in Class I Hazardous Locations. File #LR11716



#3600 & 3615 File #2Y4A5.AE

APPROVED

CENELEC Ex IIG/D

PTB 02 ATEX 1071U (Empty Housing)  
 PTB 02 ATEX 1072 (Enclosure with Controls)  
 IEC Ex PTB 05 0029

## FEATURES-SPECIFICATIONS

## Applications

- Hazardous locations due to the presence of flammable gases or vapors, combustible dusts or easily ignitable fibers or flyings, and areas which are subject to corrosion, weather and dampness
- Installations at petroleum refineries, chemical and petrochemical plants, storage areas, and other processing facilities where hazardous substances are handled or stored
- Applications requiring junction, pull and/or splice boxes
- Enclosures to house meters, relays, terminal strips, control transformers, etc.

- **Global applications\* (ATEX)**  
 Enclosures are available for global applications with "CEN" suffix. Assemblies that are modified to CENELEC/ATEX standards maintain their North American certifications.

## Features

- Compact square or rectangular enclosures with threaded screw type covers provide easy access to interior
- Can be shipped in component parts and still maintain third party UL-CSA-FM approvals
- Available in three different cover types, flat blank, lens and dome covers
- Cast mounting lugs are standard on all assemblies
- Available as blank box or can be custom drilled and tapped for conduit openings which may be factory or field installed on the four sides or back wall
- Gaskets are standard on all assemblies and with covers when component part ordering
- Internal ground screw supplied on all boxes
- CEN suffix modification for CENELEC Certification includes an external ground screw, cover locking screw, and nameplate displaying certification and area classifications. Feature is only available on complete assemblies and not available when component part ordering.

## Material/Finish

- Enclosures:  
Copper-free Aluminum (less than 4/10 of 1%)
- Optional Mounting Pans:  
Sheet Aluminum
- Lens Cover Glass:  
Tempered soda lime glass
- Cover Gaskets:  
GRB, GRE, GRM, GRK, GRL  
70 Durometer NITRILE  
GRH, GRHA, GRHC  
57 63 Durometer BUNA-N
- Electrostatically applied gray powder epoxy/polyester finish on exterior of box and cover







Box with blank cover



Box with lens cover



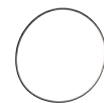
Box with dome cover

NOTE: See Page E24 for Third Party Certifications

**FEATURES-SPECIFICATIONS**

GR COMPLETE ASSEMBLIES									
COVER OPENING DIAMETER	NOMINAL EXTERNAL BOX DIMENSIONS WITHOUT COVER			CATALOG NUMBER		VIEWING AREA	CATALOG NUMBER	DEPTH OF DOME	MAXIMUM CONDUIT SIZE
	L	W	D	BOX WITH BLANK COVER	BOX WITH LENS COVER		BOX WITH DOME COVER		
3-29/32"	4-5/8"	4-5/8"	4-5/32"	GRB	GRB-275L	2-3/4"	2GRB 4GRB	2" 4"	1-1/2"
4-11/32"	6-5/8"	5-1/2"	5-1/4"	GRE	GRE-300L	3"	—	—	2"
5-9/32"	6-7/8"	6-7/8"	5-15/16"	GRM	GRM-375L	3-3/4"	3GRM 5GRM	3" 5"	2"
7-1/4"	9-7/8"	8-3/8"	6-17/32"	GRK	GRK-537L	5-3/8"	4GRK	4"	2-1/2"
7-7/8"	10-1/2"	8-7/8"	7-3/16"	GRL	GRL-600L	6"	—	—	2"
9-5/8"	12"	11"	7-5/8"	GRH	GRH-775L	7-3/4"	4GRH 8GRH	4" 8"	4"
9-5/8"	12-3/16"	11"	11"	GRHC	GRHC-775L	7-3/4"	4GRHC 8GRHC	4" 8"	4"
9-5/8"	12"	11"	16-3/16"	GRHA	GRHA-775L	7-3/4"	4GRHA 8GRHA	4" 8"	4"

NOTE: To order above items with CENELEC Modifications and Certifications add suffix CEN to end of catalog number. (Example: GRBCEN)  
To order above items with a flat back pan installed add suffix P to catalog number.



GR COMPONENT PARTS						
ENCLOSURE SERIES	CATALOG NUMBER OF COMPONENTS					
	BOX WITHOUT COVER	BLANK COVER	LENS COVER	DOME COVER	GASKET REPLACEMENT	FLAT PAN
GRB	GRBB	GRB-BC	GL-275	2" - 2GRBD 4" - 4GRBD	GRB-RG	6086PAN
GRE	GREB	GRE-BC	GL-300	—	GRE-RG	6074
GRM	GRMB	GRM-BC	GL-375	3" - 3GRMD 5" - 5GRMD	GRM-RG	6064
GRK	GRKB	GRK-BC	GL-537	4" - 4GRKD	GRK-RG	6038
GRL	GRLB	GRL-BC	GL-600	—	GRL-RG	6053
GRH	GRHB	GRH-BC	GL-775	4" - 4GRHD 8" - 8GRHD	GRH-RG	6058
GRHC	GRHCB	GRH-BC	GL-775	4" - 4GRHD 8" - 8GRHD	GRH-RG	6058
GRHA	GRHAB	GRH-BC	GL-775	4" - 4GRHD 8" - 8GRHD	GRH-RG	6058



**KILLARK®**

NOTES: Covers are supplied with gasket.  
For Group B locations all conduits must be sealed within 18" of enclosures.

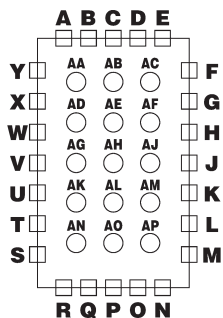


## FEATURES-SPECIFICATIONS

## Drilled &amp; Tapped Conduit Openings

Boxes are furnished blank for field drilling and tapping of conduit openings. If factory openings are requested submit drawing or select from charts below.

LOCATION CHART



SYMBOL NUMBER	
SIZE	SYMBOL
1/2"	1
3/4"	2
1"	3
1-1/4"	4
1-1/2"	5
2"	6
2-1/2"	7
3"	8
3-1/2"	9
4"	10

EXAMPLE: **GRB-C3-J2-P1=**

GRB enclosure with 1" NPT top center,  
3/4" NPT right side center,  
1/2" NPT bottom center

GR MODIFICATIONS	
SUFFIX NUMBER	DESCRIPTION
SU3	Drain and breather NEMA 3,7CD,9EFG
SU3B	Drain and breather NEMA 3,7BCD,9EFG
P	Internal flat mounting pan installed
CEN	CENELEC modification and certification (complete box & cover assembly only)
SU8	Drill for pan mounting studs without pan
SU6	Removal of external mounting lugs

- Installation of drain and breather will void NEMA 4-4x ratings
- SU3/SU3B are not CENELEC approved
- SU3B not CSA
- Contact Killark for CENELEC drain and breather requirements

GR ENCLOSURE VOLUMES	
CATALOG NUMBER	VOL. (CU. IN.)
GRB	45
GRE	105
GRM	180
GRK	305
GRL	405
GRH	615
GRHA	1450
GRHC	985
GRB-275L	40
GRE-300L	95
GRM-375L	170
GRK-537L	280
GRL-600L	380
GRH-775L	570
GRHA-775L	1400
GRHC-775L	940
2GRB	60
4GRB	80
3GRM	225
5GRM	250
4GRK	410
4GRH	820
8GRH	1050
4GRHA	1660
8GRHA	1890
4GRHC	1195
8GRHC	1425



**FEATURES-SPECIFICATIONS**

CAT. NO.	INTERNAL												+M
	A	B	C	D	E	F	G*	H	I	J	K	L	
GRB	4"	6"	5/16"	4-5/8"	4-5/8"	4-5/32"	3-29/32"	4-9/16"	4-17/32"	3-3/4"	3-3/4"	2-11/16"	2-3/4"
GRE	5-3/4"	6-1/2"	5/16"	6-5/8"	5-1/2"	5-1/4"	4-11/32"	5-3/4"	5-23/32"	4-5/8"	5-3/4"	3-9/32"	3"
GRM	5-7/8"	8-1/8"	5/16"	6-7/8"	6-7/8"	5-15/16"	5-9/32"	6-9/16"	6-9/16"	6"	6"	4-3/16"	3-3/4"
GRK	9-1/8"	9-5/8"	5/16"	9-7/8"	8-3/8"	6-17/32"	7-1/4"	7-9/32"	7-3/16"	7-1/16"	8-5/16"	4-1/8"	5-3/8"
GRL	9-1/2"	10-1/2"	7/16"	10-1/2"	8-7/8"	7-3/16"	7-7/8"	7-31/32"	7-15/16"	7-5/8"	9-1/8"	4-15/16"	6"
GRH	10-3/4"	12-1/8"	7/16"	12"	11-5/8"	7-5/8"	9-5/8"	8-3/8"	8-5/8"	9-1/2"	10-1/2"	5"	7-3/4"
GRHA	8-1/4"	12-1/8"	7/16"	12"	11-5/8"	16-3/16"	9-5/8"	16-15/16"	16-3/16"	9-1/2"	10-1/2"	13-9/16"	7-3/4"
GRHC	8-1/4"	12-1/8"	9/16"	12-3/16"	11-5/8"	11"	9-5/8"	11-3/4"	12"	9-9/16"	10-5/8"	8-7/16"	7-3/4"

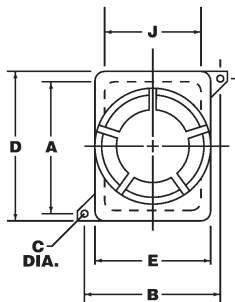
NOTE: GRH has four lugs with holes. GRHA & GRHC has four lugs with slots.

\* Box Opening

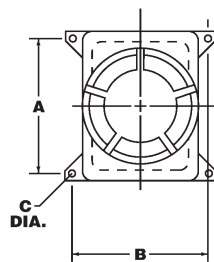
+ Lens Viewing

CATALOG NUMBER BASIC BOX W/DOME COVER	S
2GRB	7"
4GRB	9"
3GRM	10-1/4"
5GRM	12-1/4"
4GRK	11-15/16"
4GRH	13"
8GRH	17"
4GRHA	21-1/2"
8GRHA	25-1/2"
4GRHC	16-5/16"
8GRHC	20-5/16"

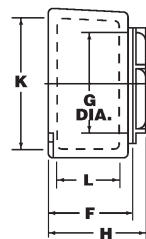
**Dimensions**



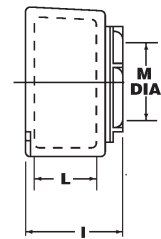
GRB  
GRE  
GRM



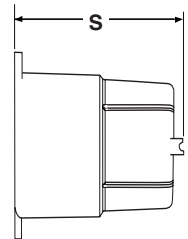
GRH  
GRHA  
GRHC



Blank Cover



Lens Cover




Dome Cover





Class I, Div. 1 & 2, Groups B,C,D  
Class I, Zones 1 & 2, Groups IIB+H<sub>2</sub>, IIA  
Class II, Div. 1 & 2, Groups E,F,G  
Class III, Div. 1 & 2  
NEMA 3, 4, 4X, 7(B,C,D), 9(E,F,G)

 #UL1203 - Explosion Proof and Dust Ignition Proof Electrical Equipment. File #E83969

 #C22.2 No. 30-M1986 -Explosion Proof Enclosure for use in Class I Hazardous Locations. File #LR11716

 #3600 & 3615 File #2Y4A5.AE

## FEATURES-SPECIFICATIONS

### Applications

Use GR Series Instrument Enclosures for mounting of 3", 3-1/2", 4" or 4-1/2" round or rectangular instruments such as ammeters and voltmeters

- Two 3/4"-14 NPT drilled and tapped conduit openings, one top and one bottom, are standard
- Internal mounting pan is attached to inside back of box with spacers for mounting meter

GR INSTRUMENT ENCLOSURES (INSTRUMENTS NOT SUPPLIED)				
CATALOG NUMBER	MANUFACTURER	INSTRUMENT		
		MODEL	SIZE	TYPE
GRM-375L52	Weston	1930 Series	3-1/2"	Rectangular
		301 Series	3"	Rectangular
		301 Series	3-1/2"	Round
GRM-375L52	General Electric	KT w/o reset	3"	Rectangular
		KT w/o reset	3-1/2"	Round
GRM-375L52	Cutler Hammer	R-351	3"	Rectangular
		B-351 w/o reset	3"	Rectangular
		N-351	3-1/2"	Round
GRM-375L52	Simpson	27,27T,37,47, 57,77 Series	3"	Rectangular
		2100 Series	3-1/2"	Rectangular
		25,25T,35,45,55 Series	3-1/2"	Round
		55ET	3-1/2"	Round
		75	3-1/2"	Round
		1300 Series	3-1/2"	Rectangular
		3223	3-1/2"	Round
		3323	3-1/2"	Rectangular
GRM-375L52	Cutler Hammer	N-371 Series	4-1/2"	Round
GRK-537L52A	Cutler Hammer	R-371 Series	4"	Rectangular
GRK-537L52A	Simpson	3224	4-1/2"	Round
GRK-537L52A	General Electric	250,162, 167,251 Series	3-1/2"	Rectangular
		178 Series	4-1/2"	Rectangular
		171 Series frequency meter	4-1/2"	Rectangular
		236 w/o Reset	3-1/2"	Rectangular
GRK-537L52B	Weston	1940 Series	4-1/2"	Rectangular
GRK-537L52B	General Electric	AB/DB-30 AC ammeter	4-1/2"	Rectangular
		AB/DB-30 AC/DC ammeter	4-1/2"	Rectangular
GRL-600L52B	General Electric	AB/DB-40 AC ammeter	4-1/2"	Rectangular
GRK-537L52B	General Electric	DB-40 DC ammeter	4-1/2"	Rectangular
		DB-40 DC voltmeter	4-1/2"	Rectangular
		171,250, 251 Series	4-1/2"	Rectangular
GRL-600L52C	Simpson	29,29T,39,49,59, 79,1300,2100 Series	4-1/2"	Rectangular
GRH-775L52B	General Electric	AB/DB-40 AC voltmeter	4-1/2"	Rectangular



FEATURES-SPECIFICATIONS

GR DIMENSIONS									
CATALOG NUMBER	FIG. NO.	A	B	C	D	E	G	H	I
GRM-375L52	1	5-7/8"	8-1/8"	5/16"	6-7/8"	6-7/8"	3-9/16"	6-13/32"	2-5/8"
GRK-537L52A	1	9-1/8"	9-1/8"	5/16"	9-7/8"	7-7/8"	4-7/8"	6-11/16"	2-1/2"
GRK-537L52B	1	9-1/8"	9-1/8"	5/16"	9-7/8"	7-7/8"	4-7/8"	6-11/16"	2-1/2"
GRL-600L52B	1	9-1/2"	10-1/2"	7/16"	10-1/2"	8-7/8"	5-13/16"	7-17/32"	2-3/4"
GRL-600L52C	1	9-1/2"	10-1/2"	7/16"	10-1/2"	8-7/8"	5-13/16"	7-17/32"	2-3/4"
GRH-775L52B	2	10-3/4"	12-1/8"	7/16"	12"	11"	7-7/16"	8-3/4"	3"

Dimensions

Figure 1

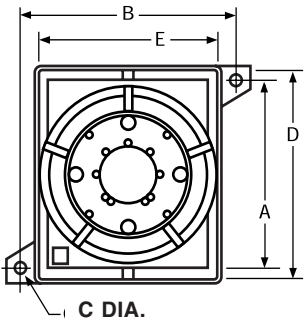
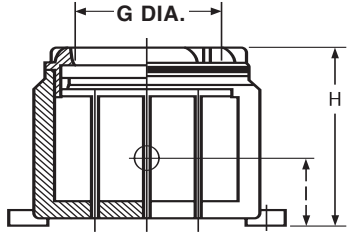
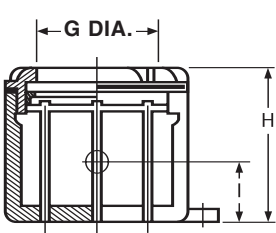
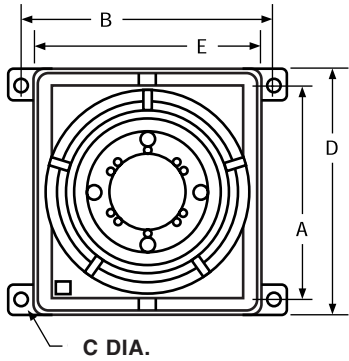


Figure 2





HK



2HK

## ATEX Certified

**Class I, Div. 1 & 2, Groups A\*, B, C, D†**  
**Class I, Zones 1 & 2, Groups IIB + H<sub>2</sub>, IIA**  
**Class II, Div. 1 & 2, Groups E, F, G**  
**Class III**  
**NEMA 3, 4, 7(B, C, D) 9(E, F, G)**  
**CENELEC/ATEX - EEx d IIC IP66\*\***



Classified - File E83969  
 & File E150827



Certified - File LR11716



File 1W1R4-RE

ATEX Certificate:

DEMCO 01 ATEX 015742U (Enclosure Only)

## FEATURES-SPECIFICATIONS

### Applications

Instrumentation housed in HK Series enclosures typically used to measure, detect, monitor, transmit and control industrial processes and systems.

HK Series enclosures are suitable for a broad range of applications, meeting both domestic and international code requirements.

Some specific examples of the type of instruments that can be housed in these enclosures include:

- Flow measurement devices
- Temperature monitors
- Two-wire transmitters
- Gas detectors
- Ph analyzers
- Pressure gauges
- Temperature transmitters
- Oxygen/combustible gas sensors
- Methane gas monitors
- Level detectors
- H<sub>2</sub>S monitors
- Transducers
- Pressure switches

See pages E32 and E33 for dimensions.

### Features

- Enclosures are explosion proof, dust/ignition proof, weather proof and tamper resistant
- HK Series boxes covers are cast from a copper-free aluminum alloy
- Cast stainless steel box, flat & lens cover available (HKSB-BC + HKSB-GLC)
- Neoprene O-rings are provided with HK boxes to assure water resistance in NEMA 4/IP66 conditions
- Two box styles available: HKB single cover design and the 2HKB double cover design. 2HKB enclosure has two separate chambers for isolation between power and instrument.
- HKB box has offset feed-thru conduit openings (3/4" NPT) for maximum use of interior volume
- 2HKB box has offset feed-thru conduit openings (3/4" NPT) on power side and one (3/4" NPT) on bottom instrument side
- Interior mounting pad for instrument/device cast into the bottom of the HKB box is provided in an "X"-configuration for flexibility
- Location of the internal ground screw boss does not interfere with the mounting of the instrument or device

- Six different cover styles are available: standard flat cover, standard glass lens cover, 1" dome lens cover, 2" dome cover, 2" glass lens dome cover and 4" dome cover
- All covers have shrouded tamper resistant set screws as standard which can help to combat excessive vibration in rugged settings
- Lugs on cover permit easy removal and tightening

### Material/Finish

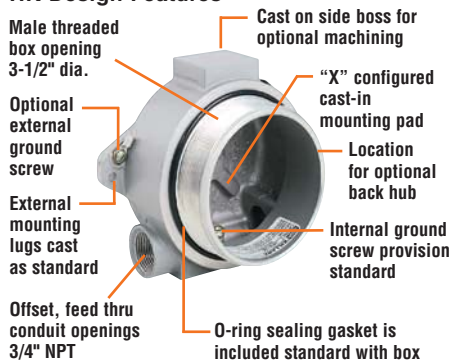
- Boxes and covers — Copper-free aluminum (less than 4/10 of 1%)
- HKSB series is 316 cast stainless steel
- O-ring sealing gasket — Neoprene rubber
- Ground screws — zinc plated steel with green dye (Stainless steel on HKSB)
- Allen head cover screw — cadmium plated steel (Stainless steel on HKSB)
- Glass lens — 3/8" thick tempered glass
- Finish — silver powder epoxy paint, electrostatically applied
- Special colors available in quantity

\* Group A FM only on HK single cover box. Order with -GA suffix.

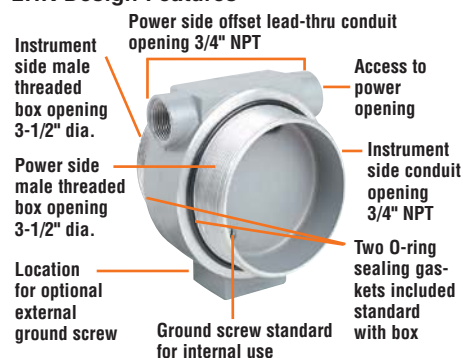
\*\*CENELEC on assembled HK parts only with suffix "C".

† Seal within 18" of enclosure for Groups BCD and within 6" for Group A in accordance with sections 501-5 and 502-5 of the National Electrical Code.

### HK Design Features



### 2HK Design Features



**KILLARK®**



NOTE: See page E30 for Third Party Certification

## FEATURES-SPECIFICATIONS

HK COMPONENT PARTS	
CATALOG NUMBER	DESCRIPTION
HKB	Single cover box only
HKBD	Single deep box only
2HKB	Double cover Box only
HFC	Flat cover
HKGL	Lens cover
HK1GLD	1" Dome lens cover
HK2D	2" Dome cover
HK4D	4" Dome Cover
HK2GLD	2" Dome lens cover
15722LABB	Rep. "O" Ring Gasket

### 2HKB Series Boxes

The wall that separates the instrument side from the power side can be machined for slots or holes up to a maximum of two slots 5/16" by 1-1/2".

Submit drawings for machining requirements to Killark.

### Factory Modifications

Approvals allow for factory or field modifications on HKB box for drilling and tapping conduit openings on side or back of enclosure without voiding UL-CSA-FM approvals. Internal mounting pad holes on "X" configured boss can be factory added by drilling from inside of box without piercing the bottom of enclosures. Assemblies with CENELEC approvals must be factory modified in order to comply with certifications.

HK ASSEMBLED PARTS②③						
CATALOG NUMBER (CAST ALUMINUM)						COVER TYPE
HKB BOX & COVERS		HKBD BOX & COVERS		2HKB BOX w / BLANK COVER on POWER SIDE & OPTIONAL COVER on INSTRUMENT SIDE④		
UL-CSA-FM APPROVED	CENELEC UL-CSA-FM APPROVED①	UL-CSA-FM APPROVED	CENELEC UL-CSA-FM APPROVED①			
				(UL-CSA-FM)	CENELEC UL-CSA-FM APPROVED①	
HKB-B	HKB-BC	HKBD-B	HKBD-BC	2HKB-B-B	2HKB-BC-BC	Standard flat
HKB-2D	HKB-2DC	HKBD-2D	HKBD-2DC	2HKB-B-2D	2HKB-BC-2DC	2" Dome
HKB-4D	HKB-4DC	HKBD-4D	HKBD-4DC	2HKB-B-4D	2HKB-BC-4DC	4" Dome
HKB-GL	HKB-GLC	HKBD-GL	HKBD-GLC	2HKB-B-GL	2HKB-BC-GLC	Lens
HKB-2GLD	HKB-2GLDC	HKBD-2GLD	HKBD-2GLDC	2HKB-B-2GLD	2HKB-BC-2GLDC	2" Dome lens

HKSB STAINLESS STEEL ASSEMBLED PARTS ②③	
HKSB BOX & COVERS CENELEC UL-CSA-FM APPROVED	COVER TYPE
HKSB-BC	Standard flat
HKSB-GLC	Lens

① Assemblies that are CENELEC approved include as standard:

- External ground screw with terminal
- Predrilled nameplate holes and screw on pad for customer installed nameplate.

② See information at right for optional factory machining.

③ Product is stocked at component level. Recommend ordering as such for reduced lead time.

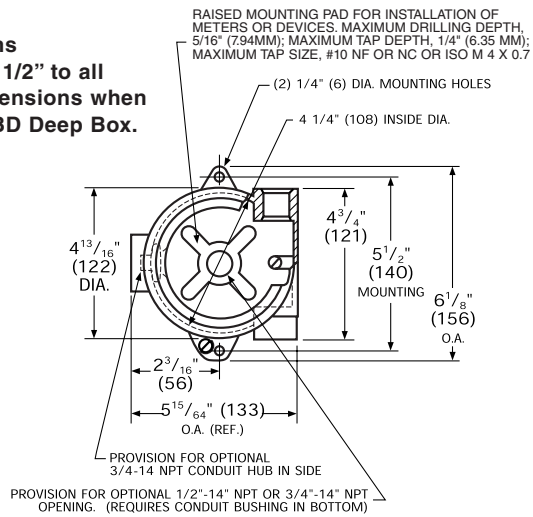
④ 2HKB Assemblies include a flat cover on power side, dome and lens covers can be substituted in place of flat cover, consult factory for ordering details.

HKB FACTORY MODIFICATIONS	
CATALOG SUFFIX	DESCRIPTION
-01 -	1/2 NPT hub in back
-02 -	3/4 NPT hub in back
-20 -	3/4 NPT hub in side
-21 -	3/4 NPT hub in side 1/2 NPT hub in back
-22 -	3/4 NPT hub in side 3/4 NPT hub in back
-02S -	3/4 NPSM hub in back
-22S -	3/4 NPT hub in side 3/4 NPSM hub in back
-2S2S -	3/4 NPSM hub in side 3/4 NPSM hub in back
-2S0 -	3/4 NPSM hub in side
-2S1 -	3/4 NPSM hub in side 1/2 NPT hub in back
-2S2 -	3/4 NPSM hub in side 3/4 NPT hub in back
-GS	External ground screw (Standard on HKB assembly with CENELEC approvals)
-GA -	Group A - FM approval (Available only on HKB box furnished with covers installed)
-SU93 -	Unpainted - Natural finish
-SU9 -	Special colors of powder paint available in quantity. Consult factory for details

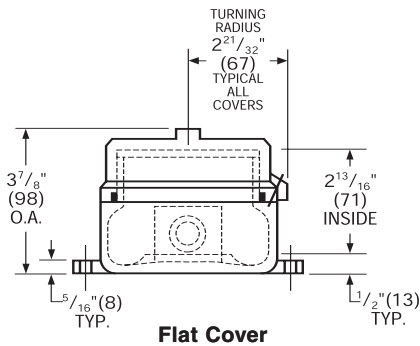
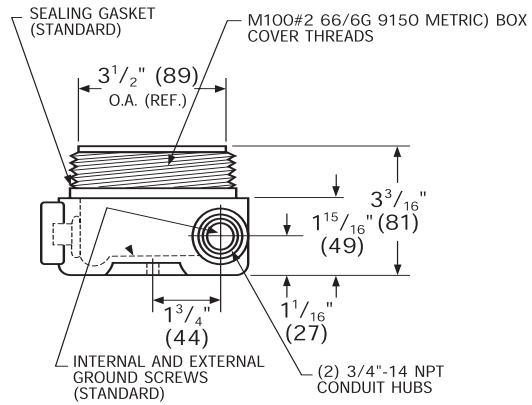
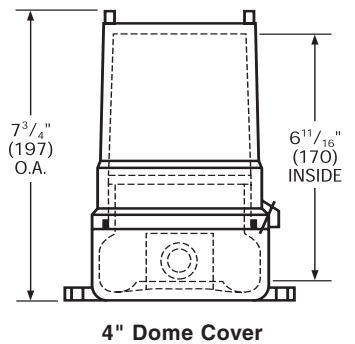
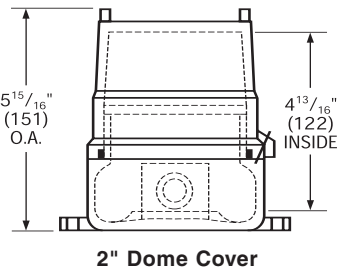


**FEATURES-SPECIFICATIONS**
**Dimensions**

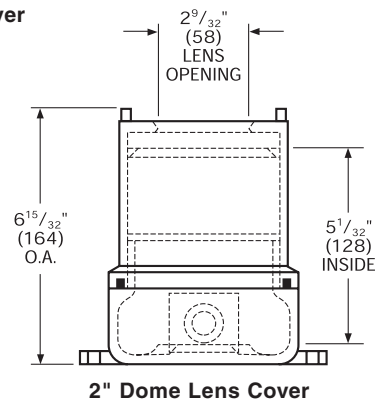
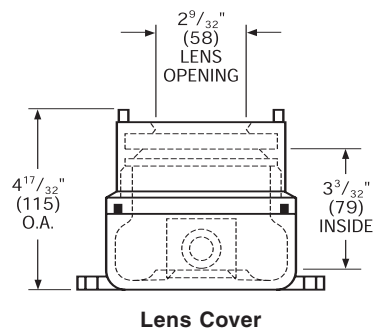
**Note: Add 1/2" to all depth dimensions when using HKBD Deep Box.**



**HKBD Volume: 31 cu. in.**


**HKBD box and blank cover**


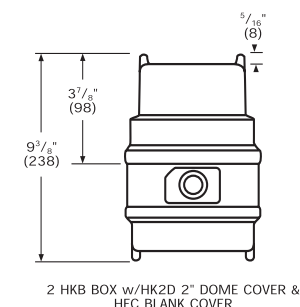
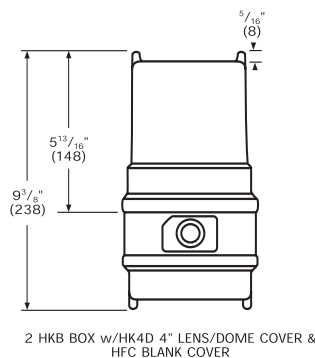
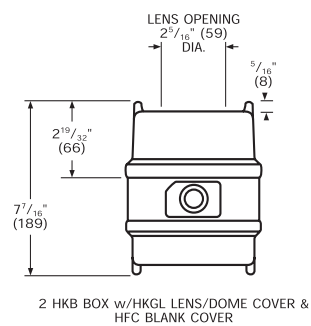
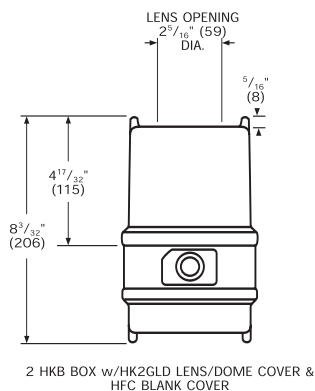
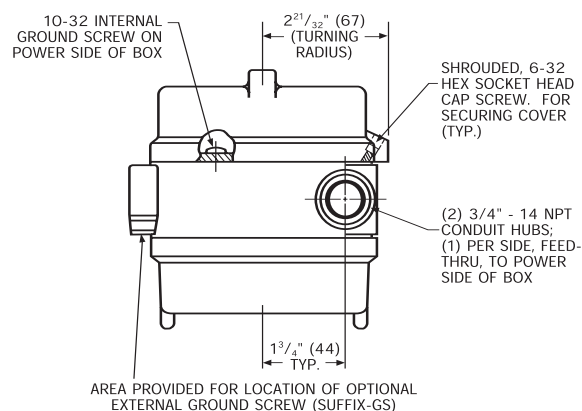
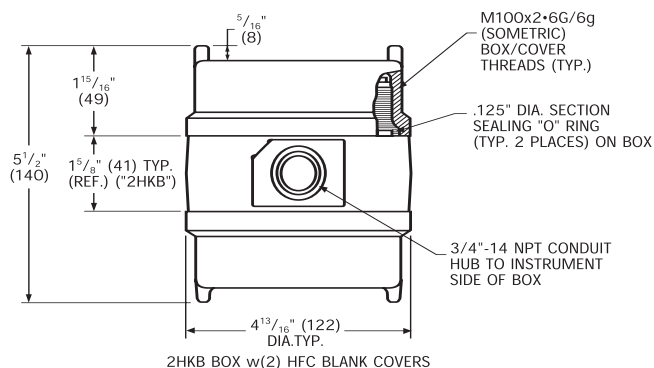
For HK1GLD (1" Dome Lens Cover), add 1" to lens cover verticle height dimensions

**HKBD box and glass lens cover**

**KILLARK®**



## FEATURES-SPECIFICATIONS

### Dimensions



### Instructions

Drilled and tapped conduit openings will be evenly spaced and located in the area indicated on the location chart. Critical conduit opening locations may be indicated by supplying a diagram similar to the one shown at right indicating critical dimensions and locations. Specific conduit openings must be located dimensionally from box centerlines to conduit centerlines and from outside back surface of box to conduit centerline.

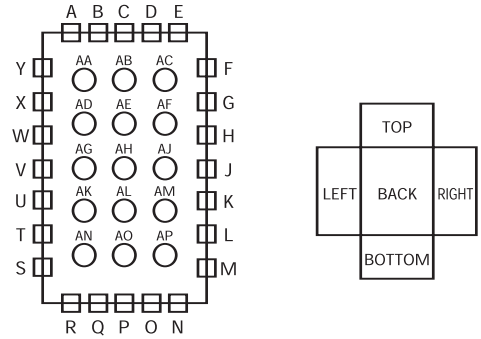
### Ordering Information:

- (1) Select the letter on location chart which indicates conduit opening position desired.
- (2) Select symbol number from chart which indicates conduit opening type and size.

- (3) Combine the conduit location letter, size and type number, and add as a suffix to junction box catalog number.

Example: XB-12168-C3-J5-PI3-AH4

EXB/XB/XJB/DB/GR SYMBOL NUMBERS		
CONDUIT SIZE	CONDUIT OPENINGS DRILLED AND TAPPED	UNION <sup>①</sup>
1/2"	1	11
3/4"	2	12
1"	3	13
1-1/4"	4	14
1-1/2"	5	15
2"	6	16
2-1/2"	7	17
3"	8	18
3-1/2"	9	19
4"	0	10
5"	02	—
6"	04	—



Drawing indicates position as looking into open face of box with short side (top) up.

EXB/XB/XJB/DB/GR MINIMUM CENTERS FOR DRILLED AND TAPPED OPENINGS AND UNION HUBS													
SIZE	FORM	1/2"	3/4"	1"	1-1/4"	1-1/2"	2"	2-1/2"	3"	3-1/2"	4"	5"	6"
1/2"	①MIN	1-3/16"	—	—	—	—	—	—	—	—	—	—	—
1/2"	②PRE	1-3/8"	—	—	—	—	—	—	—	—	—	—	—
1/2"	③GU	1-5/8"	—	—	—	—	—	—	—	—	—	—	—
3/4"	①MIN	1-3/8"	1-1/2"	—	—	—	—	—	—	—	—	—	—
3/4"	②PRE	1-1/2"	1-5/8"	—	—	—	—	—	—	—	—	—	—
3/4"	③GU	1-3/4"	1-13/16"	—	—	—	—	—	—	—	—	—	—
1"	①MIN	1-1/2"	1-3/4"	1-13/16"	—	—	—	—	—	—	—	—	—
1"	②PRE	1-3/4"	1-7/8"	2"	—	—	—	—	—	—	—	—	—
1"	③GU	1-7/8"	2"	2-1/8"	—	—	—	—	—	—	—	—	—
1-1/4"	①MIN	1-11/16"	1-15/16"	2-1/16"	2-5/16"	—	—	—	—	—	—	—	—
1-1/4"	②PRE	1-15/16"	2-1/16"	2-1/4"	2-1/2"	—	—	—	—	—	—	—	—
1-1/4"	③GU	2-1/16"	2-1/4"	2-5/16"	2-1/2"	—	—	—	—	—	—	—	—
1-1/2"	①MIN	1-5/16"	2-1/16"	2-3/16"	2-1/2"	2-5/8"	—	—	—	—	—	—	—
1-1/2"	②PRE	2-1/8"	2-1/4"	2-3/8"	2-5/8"	2-3/4"	—	—	—	—	—	—	—
1-1/2"	③GU	2-3/16"	2-9/32"	2-7/16"	2-5/8"	2-3/4"	—	—	—	—	—	—	—
2"	①MIN	2-1/4"	2-3/8"	2-9/16"	2-13/16"	2-15/16"	3-3/16"	—	—	—	—	—	—
2"	②PRE	2-3/8"	2-1/2"	2-3/4"	3"	3-1/8"	3-3/8"	—	—	—	—	—	—
2"	③GU	2-1/2"	2-19/32"	2-3/4"	3"	3-1/8"	3-3/8"	—	—	—	—	—	—
2-1/2"	①MIN	2-7/16"	2-9/16"	2-3/4"	3"	3-1/8"	3-3/8"	3-5/8"	—	—	—	—	—
2-1/2"	②PRE	2-5/8"	2-3/4"	3"	3-1/4"	3-3/8"	3-5/8"	4"	—	—	—	—	—
2-1/2"	③GU	3-1/8"	3-7/32"	3-3/8"	3-9/16"	3-11/16"	4"	4-5/8"	—	—	—	—	—
3"	①MIN	2-13/16"	2-15/16"	3-1/16"	3-5/16"	3-7/16"	3-3/4"	4"	4-5/16"	—	—	—	—
3"	②PRE	3"	3-1/8"	3-3/8"	3-5/8"	3-3/4"	4"	4-3/8"	4-3/4"	—	—	—	—
3"	③GU	3-9/16"	3-21/32"	3-13/16"	4"	4-1/8"	4-7/16"	5-1/16"	5-1/2"	—	—	—	—
3-1/2"	①MIN	3-1/8"	3-1/4"	3-3/8"	3-5/8"	3-3/4"	4-1/16"	4-5/16"	4-5/8"	4-15/16"	—	—	—
3-1/2"	②PRE	3-3/8"	3-1/2"	3-5/8"	3-7/8"	4"	4-3/8"	4-5/8"	5"	5-3/8"	—	—	—
3-1/2"	③GU	4"	4-3/32"	4-1/4"	4-7/16"	4-9/16"	4-7/8"	5-1/2"	5-15/16"	6-3/8"	—	—	—
4"	①MIN	3-7/16"	3-9/16"	3-11/16"	3-15/16"	4-1/16"	4-3/8"	4-5/8"	4-15/16"	5-1/4"	5-9/16"	—	—
4"	②PRE	3-3/4"	3-7/8"	4"	4-1/4"	4-3/8"	4-3/4"	5"	5-3/4"	5-5/8"	6"	—	—
4"	③GU	4"	4-3/32"	4-1/4"	4-7/16"	4-9/16"	4-7/8"	5-1/2"	5-15/16"	6-3/8"	6-3/8"	—	—
5"	①MIN	4-1/8"	4-1/4"	4-3/8"	4-5/8"	4-3/4"	5"	5-1/4"	5-9/16"	5-7/8"	6-3/16"	6-3/16"	—
5"	②PRE	4-3/8"	4-1/2"	4-5/8"	4-7/8"	5"	5-3/8"	5-5/8"	6"	6-1/4"	6-5/8"	7-1/4"	—
6"	①MIN	4-3/4"	4-7/8"	5"	5-1/4"	5-3/8"	5-5/8"	5-7/8"	6-3/16"	6-1/2"	6-13/16"	7-7/16"	8-1/8"
6"	②PRE	5"	5-1/8"	5-1/4"	5-1/2"	5-5/8"	6"	6-1/4"	6-5/8"	7"	7-1/4"	8"	8-5/8"
LOCKNUT BUSHING CONDUIT	1-1/4"	1-1/8"	1-11/16"	2-3/16"	2-7/16"	3"	3-7/16"	4-3/16"	4-13/16"	5-3/8"	6-11/16"	7-15/16"	—
	1"	1-1/4"	1-1/2"	1-7/8"	2-1/8"	2-5/8"	3-3/16"	3-7/8"	4-7/16"	5"	6-1/4"	7-3/8"	—
	7/8"	1-1/16"	1-3/8"	1-11/16"	1-15/16"	2-3/8"	2-7/8"	3-1/2"	4"	4-1/2"	5-9/16"	6-5/8"	—


**KILLARK®**

①Minimum spacing required to provide clearance over locknuts and bushings.

②Preferred more liberal spacings between centers of conduits to be used whenever possible.

③GU- spacing required for "GU" Series unions.

④Supplied by using a drilled and tapped conduit opening with "GUM" Series union.

⑤Note: For metric conduit openings round up to the nearest NPT and use "GU" spacing.