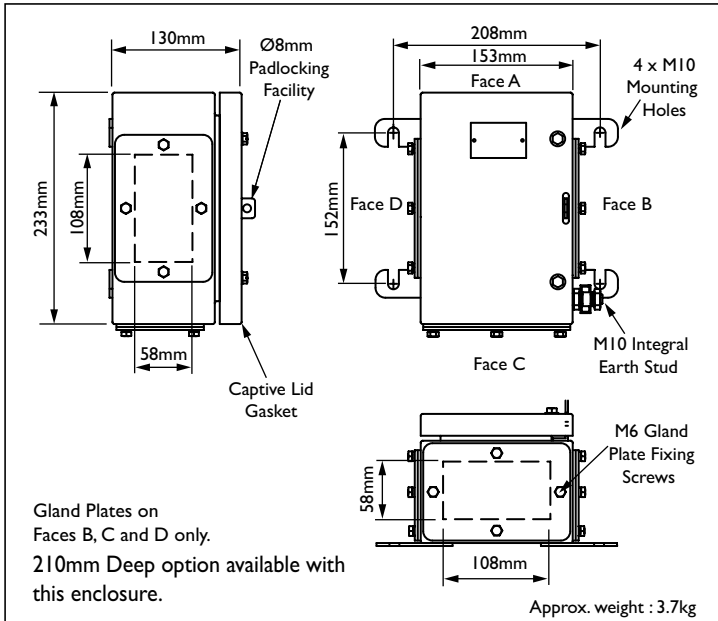




# Enclosure Type Stainless Steel Size I Increased Safety EExe

S Series Stainless Steel Enclosures



## Technical Data

- Increased Safety EExe.  $\text{Ex}$  II 2 GD EExe II.
- SIZE I BASEEFA Certificate No. BAS 01 ATEX 2106X.
- ZSIZE I BASEEFA Certificate No. BAS 01 ATEX 2105U.
- Suitable for use in Zone I, Zone 2, Zone 21 & Zone 22.
- Construction and test standards EN 50014, EN 50019 and EN 50281-1-1. IEC 60079-0 and IEC 60079-7.
- IP66 ingress protection to IEC 60529 and EN 60529.
- DTS01 deluge protection witnessed by EECS.
- Operating temperature range -40°C to +80°C.
- Temperature Class and Ambient T6 40°C. Optional T5 with ambients up to 65°C.
- Assembly instruction data sheet No. A.I. 266. For SIZE I.
- Assembly instruction data sheet No. A.I. 267. For ZSIZE I.
- 210mm deep option available.
- Alternative Certification Options Available.

- Exe II.
- AExe II/Exe II.

For full Technical Specification see page 35.

MAXIMUM QUANTITY OF ENTRIES PER FACE					
Thread Size	M16	M20/O	M20/A	M25	M32
Quantity	5 # *	5 # *	3	2	1

# Serrated Washers/Locknuts with large outside diameters may foul on adjacent glands.

\* Serrated Washers/Locknuts must not foul on aperture wall.

**Note:** For Cable Entry Positions see page 32.

TERMINAL CAPACITY DATA							
Terminal Type	Conductor Size (mm <sup>2</sup> )		Max. Volts	Max. Physical Terminal Content		Reduced Terminal Content at Max. Terminal Amps	
	Min.	Max.		Terminal Quantity	Amps	Terminal Quantity	Amps
WDU 2.5	0.5	2.5	550	30	13	12	21
WDU 4	0.5	4	750	25	18	11	28
WDU 6	0.5	6	550	19	26	10	36
WDU 10	1.5	10	550	15	38	8	50
WDU 16	1.5	16	550	13	51	7	66
WDU 35	2.5	35	750	9	90	6	109

**Notes:** For Junction Box Wattage Factor & Combined Terminal Resistance see pages 37 - 39.  
The box is supplied with an integral internal/external earth stud assembly.