

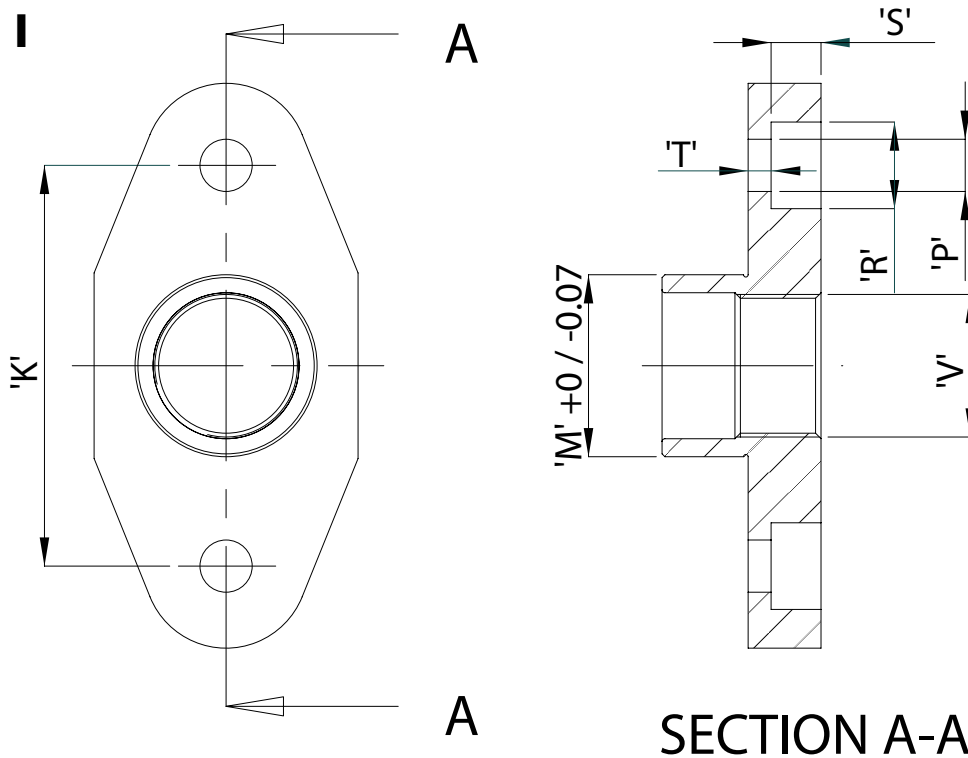
Assembly Instructions for flange type

Assembly Instructions
AI 344
Issue K - 05/06

483 & 484 EExd I
Certificate No. Baseefa 02 ATEX 0173U  IM 2 IP66

HAWKE
International

483 EExd I



This is a component certified flange adaptor, ensure that apparatus certificate lists this component as acceptable.

FLANGE ADAPTOR DIMENSIONS - 483							
	K	M	P	R	S	T	Fixing Screws
O	57.15	25.40	6.7	11.1	7.0	4.1	M6
A	57.15	25.40	6.7	11.1	7.0	4.1	M6
B	69.85	31.75	9.1	15.1	8.7	4.0	M8
C	82.55	38.10	9.1	15.1	8.7	4.0	M8
C2	95.25	50.80	11.1	18.1	10.5	3.8	M10
D	114.30	63.50	11.1	18.1	10.5	3.8	M10
E	127.00	76.20	11.1	20.5	13.5	4.0	M10

EQUIPMENT ENTRY HOLE SIZE - 483		
	MAX	MIN
O	25.70	25.45
A	25.70	25.45
B	32.05	31.80
C	38.40	38.15
C2	51.10	50.85
D	63.80	63.55
E	76.50	76.25

Smarter products

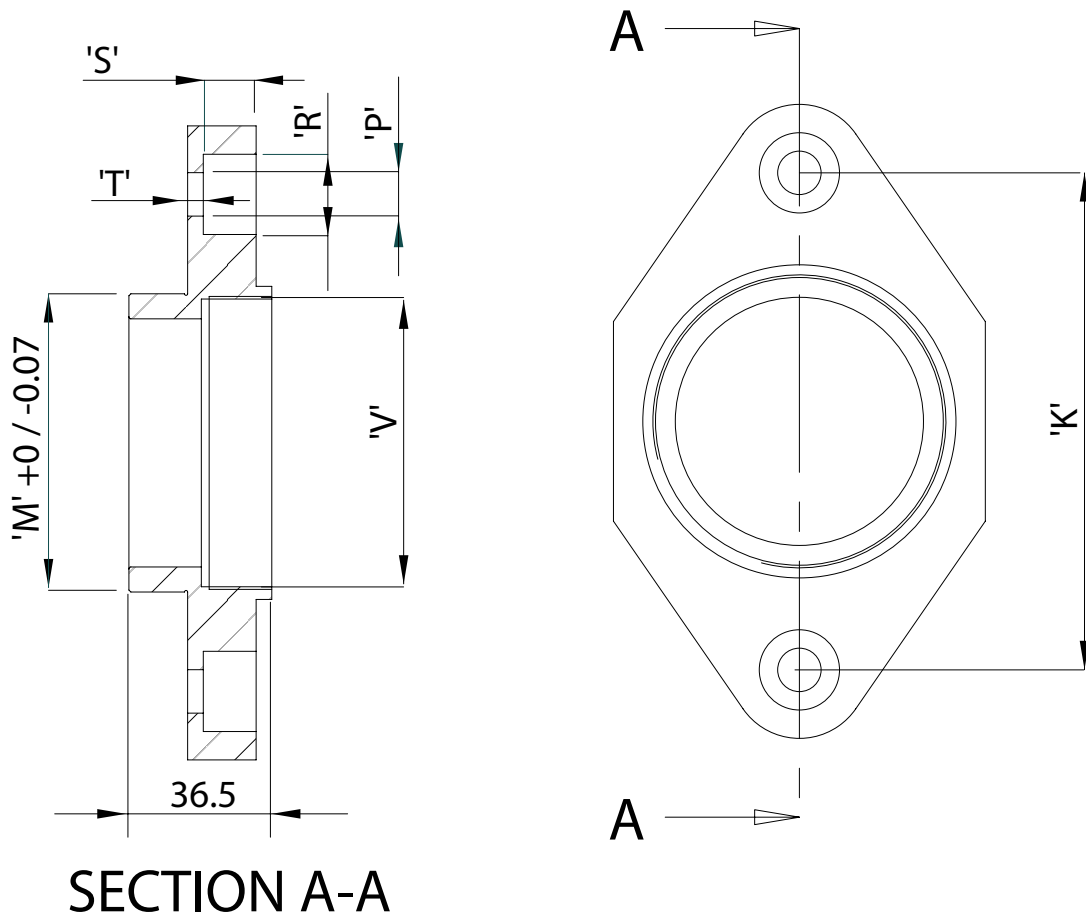
Hawke International is a division of Hubbell Limited
A member of the Hubbell Group of Companies.



AI 344 - Issue K / Page 1 of 2

HAWKE
International

484 EExd I



SECTION A-A

This is a component certified flange adaptor, ensure that apparatus certificate lists this component as acceptable.

FLANGE ADAPTOR DIMENSIONS - 484							
	K	M	P	R	S	T	Fixing Screws
O / A	44.45	19.05	6.7	11.1	7.0	4.1	M6
B	57.15	25.40	6.7	11.1	7.0	4.1	M6
C	69.85	31.75	9.1	15.1	8.7	4.0	M8
C2	82.55	38.10	9.1	15.1	8.7	4.0	M8
D	95.25	50.80	11.1	18.1	10.5	3.8	M10
E	114.30	63.50	11.1	18.1	10.5	3.8	M10
F	127.00	76.20	11.1	20.5	13.5	4.0	M10

EQUIPMENT ENTRY HOLE SIZE - 484		
	MAX	MIN
O / A	19.35	19.10
B	25.70	25.45
C	32.05	31.80
C2	38.40	38.15
D	51.10	50.85
E	63.80	63.55
F	76.50	76.25

FOR BOTH 483 AND 484

Step 1 (Prior to Installation)

Ensure the holes in the equipment are compatible with the flange adaptor. Details of equipment entry hole sizes and relevant dimensions of the adaptor are shown in the tables.

Step 2

Push the adaptor into the equipment entry hole and secure the adaptor to the enclosure using 2 socket cap head screws of the correct thread size. The length of the thread must be selected such that the screws do not bottom in the fixing holes.

NOTE:

Do not use a stopping plug to close off the female thread of adaptor.

Visit our Web Site at www.ehawke.com