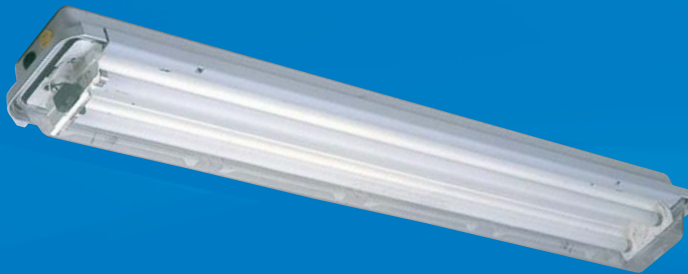


PROTECTA III

Ex e FLUORESCENT

The Protecta III luminaire for tubular fluorescent lamps is both rugged and high quality. It is constructed using a glass reinforced polyester (GRP) body and polycarbonate diffuser which resist saline and other corrosive environments.

Major features of the luminaire are the strength of the enclosure and mounting points together with the very high degree of ingress protection afforded by the simple reliable construction. All control gear is mounted on the easily removable gear tray for ease of installation and maintenance. The ease of access to lamps and control gear ensures that installation and maintenance will be completed quickly and efficiently.



EOL Protected

Standard Specification

Features

Type of Protection	Ex eqm (Increased safety Powder filling Encapsulation)	Simple rugged construction
ATEX Classification	Group II Category 2 G D	Full length easy access diffuser clamp
Area Classification	Zone 1 and 21 areas to EN 60079-10 and EN 50281-3 with installation to EN 60079-14 and EN 50281-1-2	Hinged cover
Apparatus Standard	EN 50014 EN 50017 EN 50019 EN 50028 EN 50281-1-1	Standard fixing centres
Certificate	EC Type Examination Certificate Baseefa04ATEX0220	High frequency control gear gives 50/60Hz operation, high power factor correction and regulation of lamp output
Coding	⊕ II 2 G D EEx eqm II T4 Tamb 55°C	dc operation
Enclosure	GRP body with polycarbonate cover and brass suspension points	Automatic lamp de-energisation on opening
Reflector/Geartray	White polyester painted zinc coated steel	Screwless mains terminals
Entry	4 x M20 cable entries, 2 at each end	DTS-01 deluge tested
Termination	3 core 6mm ² max. conductor with looping and 16A rating through wiring	Resistant to voltage fluctuations
Installation	Two M8 tapped brass inserts located on rear of body.	Vibration tested to comply with Lloyds/DNV
Control Gear	High Frequency	GOST, CSA and CEPEL Approved
Relamping	Quick release diffuser clamp and hinged cover	IEC Ex Compliant
Lampholder	Fa6 Cap (Mono-pin), G13 (Bi-pin)	End of life (EOL) protection to IEC 60079-7 (with EOL I and EOL II functionality)
Lamp Type	T8 tubular fluorescent	
Burning Position	Universal	
Ingress Protection	IP66/67 to EN 60529	
Electrical Supply	220V - 254V 50/60Hz 220 - 300V dc	

ATEX CATEGORY 2 ZONE 1 & 21 APPLICATIONS

Std. Cat No.	Part No.	Wattage	Weight	Options - Suffix to Catalogue No.	
PRGE/218/BI	500231	2x18W	4.2kg	/120	Specific voltage (110/130)
PRGE/236/BI	500431	2x36W	9.8kg	/M25	M25 entries
PRGE/218/MO	500239	2x18W	4.2kg	/SB	Stainless steel mounting bush
PRGE/236/MO	500439	2x36W	9.8kg	/3P	3 phase termination facility (Not available if looping required)
				/LBE	Looping both sides
				/EL	Extra live termination facility (to match emergency circuit)
				/SE	Spigot entry

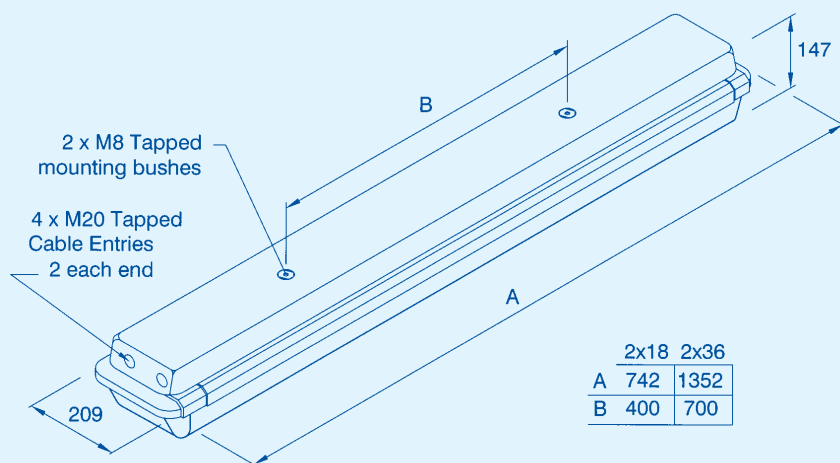
MO - Mono-pin Lamps

Mono-pin Coding: EEx eqd IIC

Dust only version (PRGU/___) available.

Applications

Zone 1 and 2 hazardous areas • Offshore oil and gas platforms
Chemical industry • Pharmaceutical industry • Sewage treatment plants
Process areas • Walkways • FPSO's and FSO's vessels • M.O.D. installations
Distilleries • Gas pumping stations



Accessories (Should be ordered separately)

	Catalogue Order Code
Offset ceiling bracket assembly	SPRO4-0002
Pole mounting bracket assembly (38/50 diameter poles)	SPRO4-0003
C' form hook type ceiling bracket assembly	SPRO4-0005
Flush mounted wall bracket assembly	SPRO4-0006
Wall mounting outreach bracket (18W/36W spigot entry /SE versions)	NPRO4-0007
Standard 18W wall mounting outreach bracket (use with SPRO4-0003)	NPRO4-0008
Standard 36W wall mounting outreach bracket (use with SPRO4-0003)	NPRO4-0012
Eyebolt kit	SPRO5-0005
Looping Kit (Allows looping from both ends of luminaire)	SPROT-0021

Product design and specifications are subject to change without notice, please check the Chalmit website for latest specifications.

