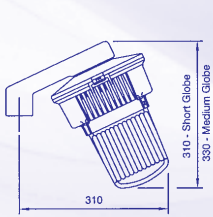
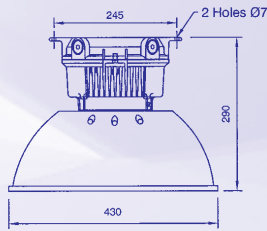


ECLIPSE RANGE

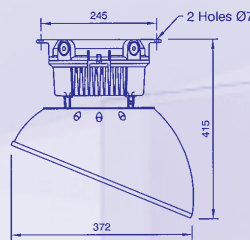
JUNIOR



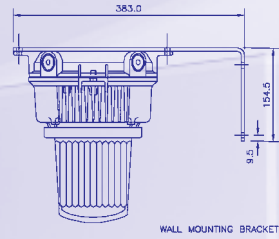
Stanchion mounting arrangement
To suit pole threaded 1 1/4" NPT



Eclipse Junior c/w glass globe
& full reflector

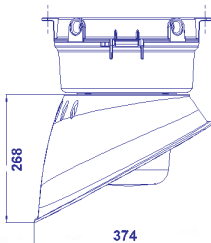


Eclipse Junior c/w glass globe
& 30° angled reflector

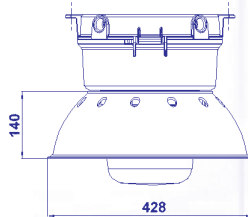


WALL MOUNTING BRACKET

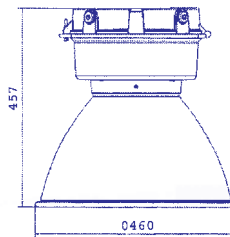
ECLIPSE II



Angle reflector



Dome reflector

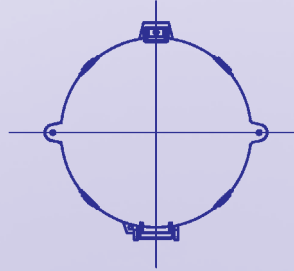


Sealed spun reflector

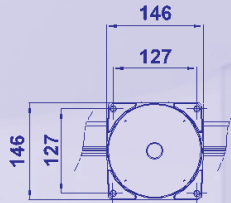
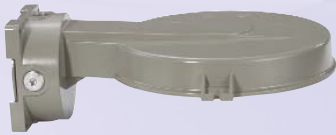
MOUNTING VARIATIONS and ACCESSORIES

ECLIPSE II MOUNTING ACCESSORIES

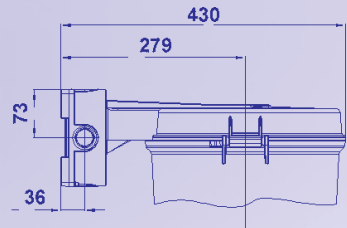
CEILING AND FLUSH MOUNTING



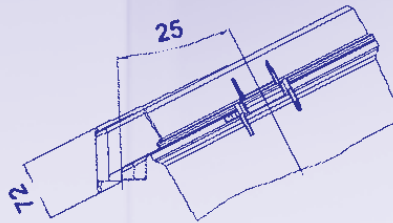
WALL MOUNTING



4 x MOUNTING HOLES
SUITABLE FOR M6 SCREWS

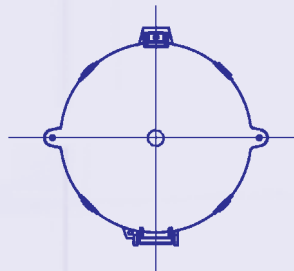


STANCHION MOUNTING



TO SUIT POLE DIAMETER 70mm (1½ THREADED)

PENDANT MOUNTING



Electrical Products