



FZD 04

E X - F L O O D L I G H T

| FZD 04 |

Technical data

Type FZD 04

EC-Type Examination Certificate	PTB 02 ATEX 1158
Category of application	⊕ II 2 G EEx de IIC T4/T3 ¹⁾ ⊕ II 2 D IP 66 T ¹⁾
Voltage	230 V ²⁾ ±10 %
Frequency	50 Hz ²⁾
Power factor	0.90
Rated current	250 W approx. 1.25 A 400 W approx. 1.8 (HIT)/2.1 A (HST)
Insulation class to EN 60 598	I
Degree of protection to IEC 60529	IP 66
Permissible ambient temperature	
during operation	-45 °C to +40 °C
storage temperature	-45 °C to +60 °C

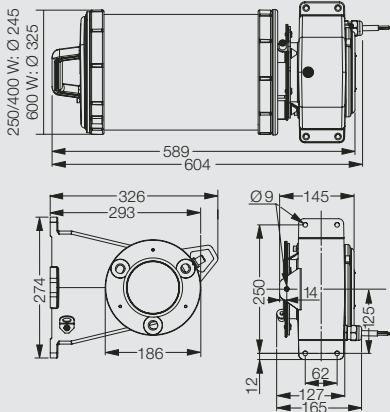
Lamp module/Floodlight enclosure

Enclosure material	Diecasted light alloy (lamp module) Light alloy (enclosure)
Protective cover	temper safety glass
Lamp cap acc. to EN 60061-1	E 40
Lamps ³⁾	250 W/400 W metal halide high pressure HIT or 250 W/400 W high pressure sodium HST 600 W high pressure sodium HST ⁴⁾
Supply terminal clamping capacity	
2 x per terminal	2 x 2.5 mm ² + 2.5 mm ² PE
EEx-e cable entry standard version	1 x M25 x 1.5 for cable Ø (8 to 17 mm)
Weights	
Floodlight enclosure	appr. 4.3 kg
Lamp module	appr. 10.6 kg (250/400 W) 15 kg (600 W)

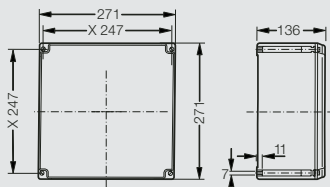
Ballast enclosure

Enclosure material	reinforced polyester or stainless steel ¹⁾
Supply terminal clamping capacity	
2 x per terminal	3 x 4 mm ²
EEx-e cable entry standard version	2 x M25 x 1.5 for cable Ø (8 to 17 mm), 1 x EEx-e blanking plug
Weight	appr. 9 kg appr. 10 kg

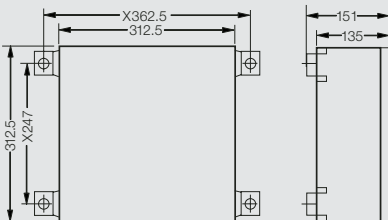
- ¹⁾ see ordering details
- ²⁾ other voltages and frequencies on request
- ³⁾ 150 W HIT/HST-lamps and HME lamps on request
- ⁴⁾ applied for



FZD 04 250/400/600 W



Ballast enclosure: plastic



Ballast enclosure: stainless steel

Dimensions in mm



FZD 04

E X - F L O O D L I G H T

| FZD 04 |

Ordering details for FZD 04 with ballast enclosure made of glass-fibre reinforced polyester with cable entry

Type	Lamp	Temp.- class	max. surface temp.	Reflector	Order No.
FZD 04	250 W HIT/HST	T4*	150 °C	narrow	NOR 000 005 192 505
FZD 04	250 W HIT/HST	T4*	150 °C	wide	NOR 000 005 192 506
FZD 04	400 W HIT	T3	180 °C	narrow	NOR 000 005 194 105
FZD 04	400 W HIT	T3	180 °C	wide	NOR 000 005 194 106
FZD 04	400 W HST	T3	180 °C	narrow	NOR 000 005 194 005
FZD 04	400 W HST	T3	180 °C	wide	NOR 000 005 194 006

Ordering details for FZD 04 with ballast enclosure made of stainless-steel with cable entry

Type	Lamp	Temp.- class	max. surface flächen-Temp.	Reflector	Order No.
FZD 04	250 W HIT/HST	T4*	150 °C	narrow	NOR 000 005 192 501
FZD 04	250 W HIT/HST	T4*	150 °C	wide	NOR 000 005 192 502
FZD 04	400 W HIT	T3	180 °C	narrow	NOR 000 005 194 101
FZD 04	400 W HIT	T3	180 °C	wide	NOR 000 005 194 102
FZD 04	400 W HST	T3	180 °C	narrow	NOR 000 005 194 001
FZD 04	400 W HST	T3	180 °C	wide	NOR 000 005 194 002

Ordering details for FZD 04 with ballast enclosure made of glass-fibre reinforced polyester without cable entry

Type	Lamp	Temp.- class	max. surface temp.	Reflector	Order No.
FZD 04	250 W HIT/HST	T4*	150 °C	narrow	NOR 000 005 192 507
FZD 04	250 W HIT/HST	T4*	150 °C	wide	NOR 000 005 192 508
FZD 04	400 W HIT	T3	180 °C	narrow	NOR 000 005 194 107
FZD 04	400 W HIT	T3	180 °C	wide	NOR 000 005 194 108
FZD 04	400 W HST	T3	180 °C	narrow	NOR 000 005 194 007
FZD 04	400 W HST	T3	180 °C	wide	NOR 000 005 194 008

Ordering details for FZD 04 with ballast enclosure made of stainless-steel without cable entry

Type	Lamp	Temp.- class	max. surface temp.	Reflector	Order No.
FZD 04	250 W HIT/HST	T4*	150 °C	narrow	NOR 000 005 192 503
FZD 04	250 W HIT/HST	T4*	150 °C	wide	NOR 000 005 192 504
FZD 04	400 W HIT	T3	180 °C	narrow	NOR 000 005 194 103
FZD 04	400 W HIT	T3	180 °C	wide	NOR 000 005 194 104
FZD 04	400 W HST	T3	180 °C	narrow	NOR 000 005 194 003
FZD 04	400 W HST	T3	180 °C	wide	NOR 000 005 194 004

Scope of delivery without illuminant and fixing accessories; *T4 angle of distribution downloads (max. ±135°)



Slip fitter

Swivel bracket

Mounting plate

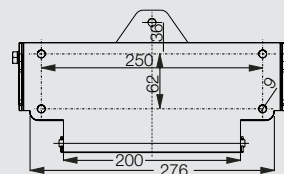
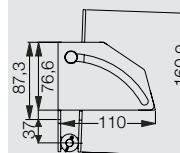
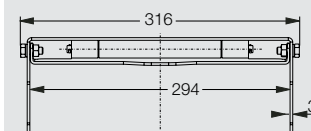
600 W lamp module

E X - F L O O D L I G H T

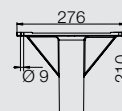
| F Z D 0 4 |

Accessories

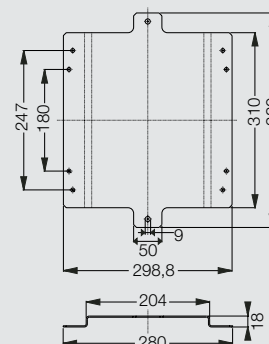
Type	Content	Order No.
Lamp module	Lamp module 250 W/400 W complete with internal reflector, narrow-angle reflector	1 3041 000 011
	with internal reflector, wide-angle reflector	1 3041 000 012
Slip fitter	fitter for pole 1 1/4" mounting complete with fixing screws	NOR 000 005 190 021
Slip fitter	fitter for pole 2" mounting complete with fixing screws	NOR 000 005 190 022
Swivel bracket	Ajustable hinge for wall/pole mounting	NOR 000 005 190 023
Mounting plate	Stainless steel plate for wall or pole installation (using pipe clamps, not incl.)	2 3041 520 200
Pipe clamp	1 1/4" pipe clamp (1 pcs) galvanized Ø 38 - 42 mm	2 2480 462 000
Pipe clamp	1 1/4" pipe clamp (1 pcs) stainless steel Ø 38 - 42 mm	2 2480 464 000
Pipe clamp	1 1/2" pipe clamp (1 pcs) galvanized Ø 47 - 51 mm	2 2480 472 000
Pipe clamp	2" pipe clamp (1 pcs) galvanized Ø 56 - 60 mm	2 2480 482 000



Swivel bracket



Slip fitter



Mounting plate