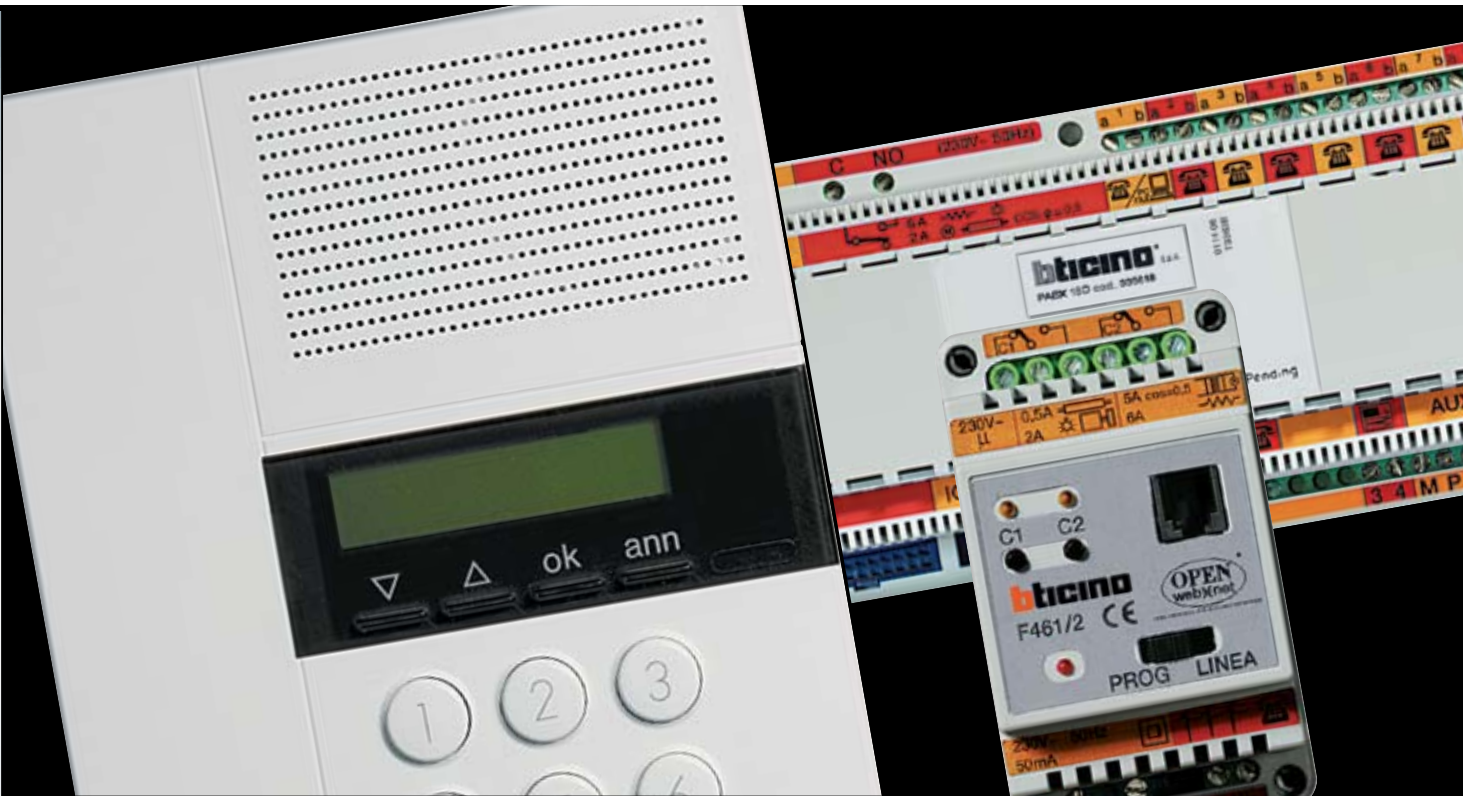


MY HOME - CONTROL



SECTION CONTENTS

- 132 General features
- 142 Catalogue

MY HOME control

The home management and control from distance

As well as the local controls in the home, the My Home system can also be managed and controlled at a distance, using landline or mobile phones or a PC connected to the Internet. The remote controls range from the simple operation of a timer thermostat to more advanced functions such as the signalling of an alarm, the visual check of the rooms and the sending of an e-mail message to a remote PC.







The remote control can be performed with various devices produced for every need and type of management.

CHOICE OF THE CONTROL DEVICE

The choosing criteria to identify the device that should be installed in a home are the following:

- Type of available connection in the home (fixed telephone line, ADSL,...)
- Needs of the user (control of electrical loads, management of images, sending alarms,...)

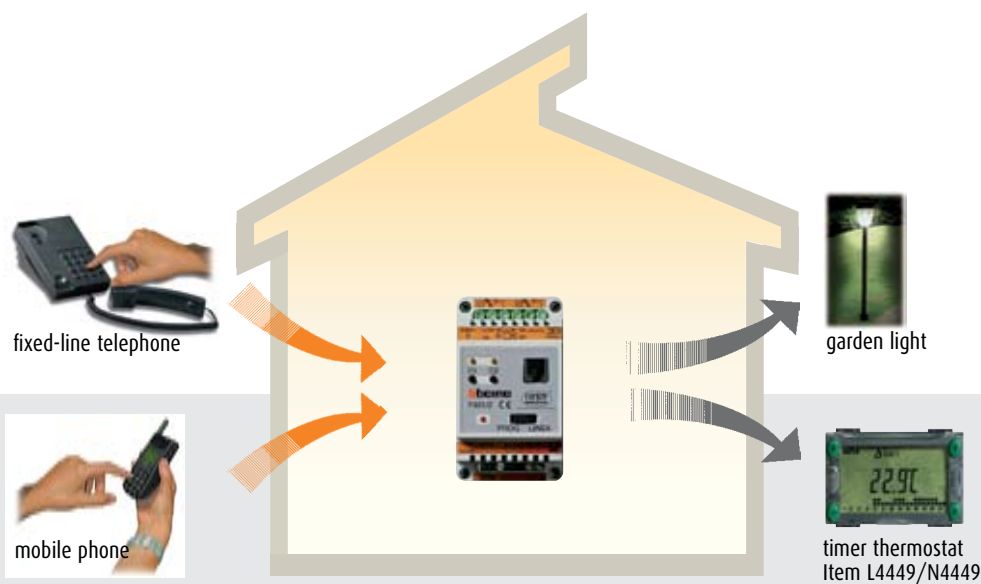
These criteria can be summed up in the following list:

Needs of the user	Type of connection at home	
	Fixed telephone line	Wide band ADSL
Control of single electrical loads	 Telephone actuator Item F461/2	
	 PABX switchboard Item 335818 and 335828	
Control of all electrical loads and management of alarms	 Telephone dialling device Item 4075N	 Web server Item F451
Control of all electrical loads, management of alarms and images		 Web server Item F451V
Control of all electrical loads, management of alarms, images and answering service of the video door entry system		 Web server Item MHSERVER

Control at a distance via telephone commands

TELEPHONE ACTUATOR

The commands in the four-digit structure or complete with alphanumeric codes can be sent from a landline or mobile phone to, e.g., open or close the rolling shutters, switch on the boiler or water the garden. The actuator is programmed via a common telephone which is also used to set the mode of operation (lighting, automation or temperature regulation function).



Remote control of automation and temperature regulation device

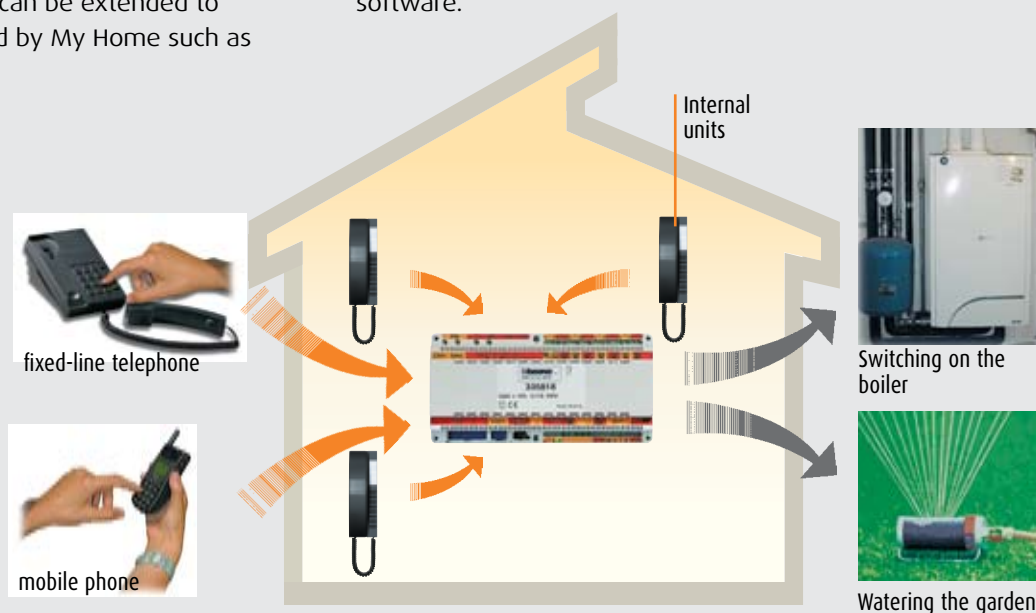
Telephone switchboard

This device can manage and combine the external telephone lines, the door entry line and the extensions. From each extension connected to the switchboard one can answer a door entry call, access the local outside line and communicate with other extensions.

With the addition of special relay modules, the use of the switchboard can be extended to special functions offered by My Home such as

the possibility of managing, via both extensions and external telephones, lighting and automation devices, activating scenarios or managing the timer thermostat to select the programming of economical or comfortable heating.

The switchboards can be easily programmed from any telephone or with PC and TiPBX software.



Remote control and from extensions of heating and watering devices

Control at a distance via telephone and web server

TELEPHONE DIALLING DEVICE

This device can send pre-recorded alarm (burglar alarm, gas leak etc.) messages on the telephone line and perform local or remote operation of My Home automation devices (switching on lights, control of rolling shutters etc.).

The communicator can also be interrogated remotely by telephone to check the state of the burglar-alarm system or to activate the talk/listen function (room monitor). Connected to the pair of the burglar-alarm system bus, the communicator also continuously monitors the power supply voltage, quickly sending a message when there is a cut of the 230V a.c. power supply for more than two hours.



IN THE MORE ADVANCED USES the devices inside the dwelling can be controlled remotely, telephonically with simple numerical codes, or devices can be automatically operated after a break in (e.g. switching on the lights after a break in has been detected or operating the cameras in the rooms where there is an alarm).



■ WEB SERVER - ITEM F451, ITEM F451V

My Home can remotely command and control all the combined functions in the home using a PC connected to a local network or to the Internet. The remote control is performed using the device called Web Server which can work remotely on My Home by means of icons displayed with web pages which can be consulted with a standard navigation program (browser). All the functions in the home (automation, burglar-alarm, etc.) lead to the Web Server, by means of the My Home system bus: it is connected to the outside

world by the Ethernet network or by connection via modem over a telephone line.

From any remote PC the user can operate and control the My Home systems as well as, for example with the Web Server Item F451V, checking the home by activating the cameras after a burglar-alarm event has been signalled.

The control web pages are personalised and the connection parameters configured by means of specific software supplied with the Web Server.

Monitoring, command and control of the automation and CCTV functions



Note: (*) function available with the Web Server Item F451V

My Home server

■ **MHSERVER**

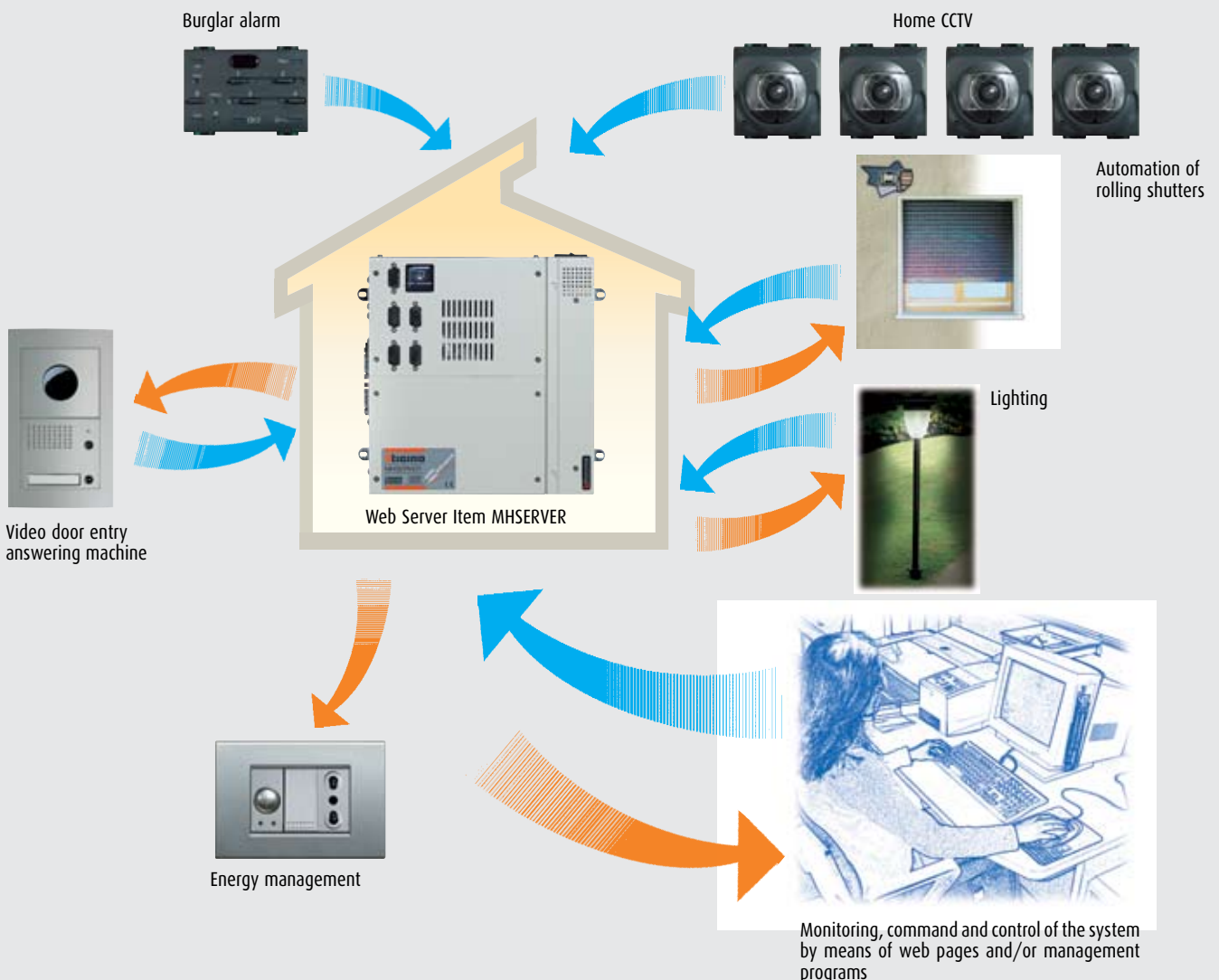
This audio/video server monitors and controls a My Home system. The user can connect locally or remotely via modem or data network and, using a commercial browser, perform the following operations:

- monitoring and control of the automation (light, rolling shutters, etc.), burglar-alarm, energy management and CCTV systems;
- show the picture transmitted by one of the cameras in the video door entry system and hear the sound captured by the microphone of the camera selected

- hear audio messages and see pictures sent from the door entry entrance panel to My Home Server when the "video door entry answering machine" function is active.

Moreover My Home Server can send an e-mail message with attached pictures or audio messages; e.g. if there is an alarm the pictures taken by the camera in the area from which the alarm has come can be received. The server's performance can satisfy any requirement of control and monitoring of building automation systems. This device is thus particularly suitable for installations in the service sector or in prestige dwellings.

My Home functions which the Web Server can manage



SYSTEM MANAGEMENT SOFTWARE

Inside a local network use of the Web Server offers various solutions for managing and controlling the My Home system via PC. BTicino has developed a series of software whose features and potential have been expressly studied to satisfy different user requirements. The software, studied for Windows 95 or later, are available in a CD ROM supplied with Web Servers Item F451, Item F451V and Item MHSERVER.



CD supplied with the Web Servers.

TiWeb

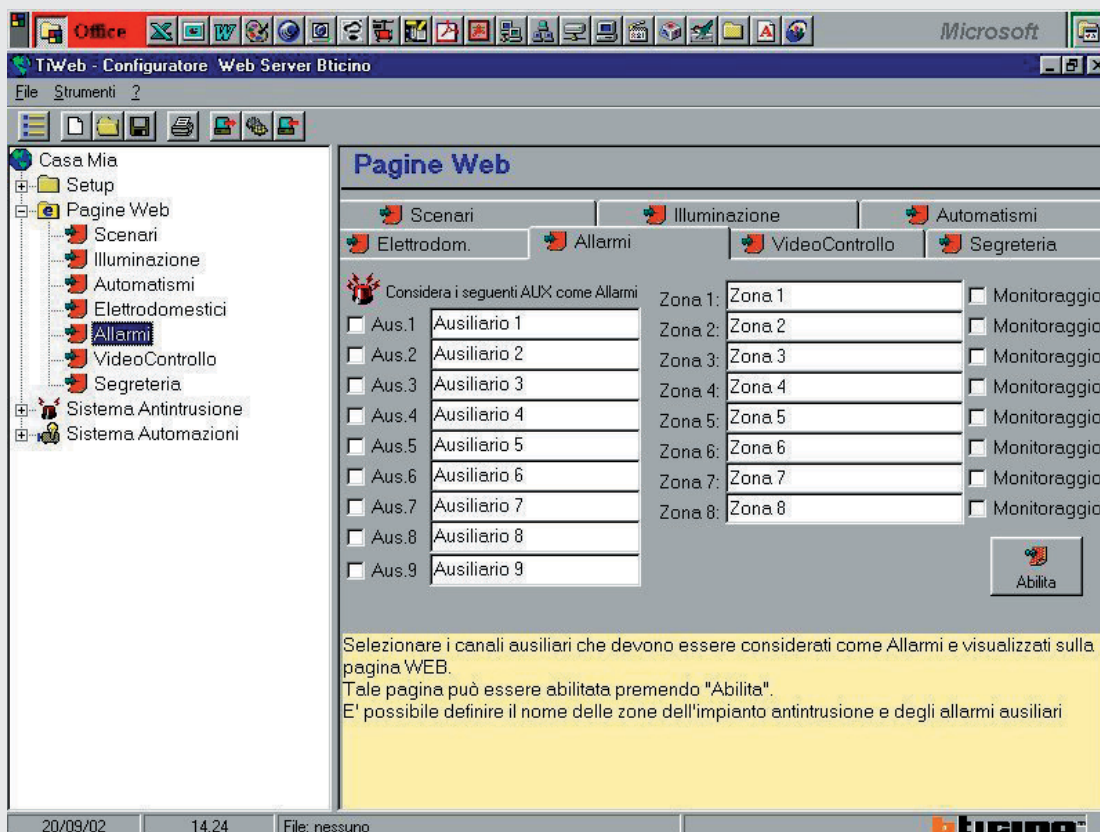
This program supplied with the Web Servers configures them and creates the remote management web pages of the My Home system displayed with standard web navigation programs (browsers).

The program can configure:

- the functions to be displayed and managed on the PC such as CCTV, automation, scenario management etc.

- the e-mail addresses for the automatic sending of messages linked to events such as burglar alarms or technical alarms
- the IP addresses of the Web Server and the PC for communication within the LAN or Internet.

The program can also import the Web Server configuration on PC for updates following modifications to the My Home system.



Example of TiWeb screen for the creation of a web page for the control of the burglar alarm system

SYSTEM MANAGEMENT SOFTWARE

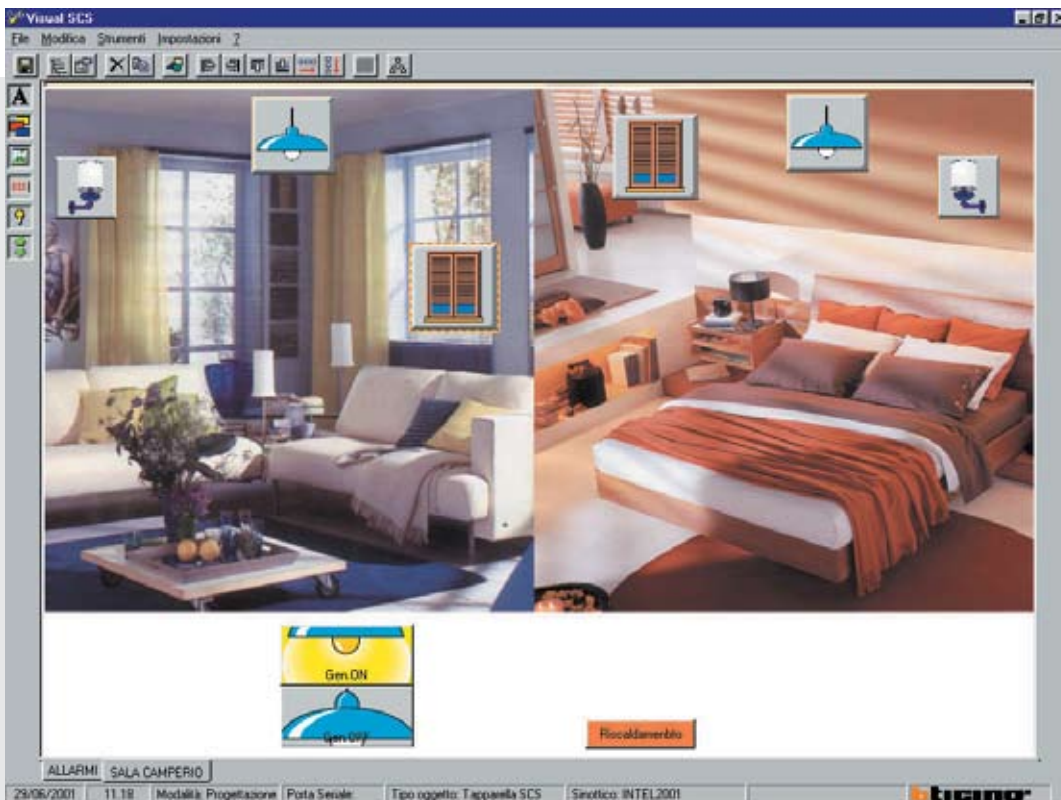
■ VISUAL SCS

Via an easily personalised graphic interface this program can command and control via PC the My Home system automation and lighting devices.

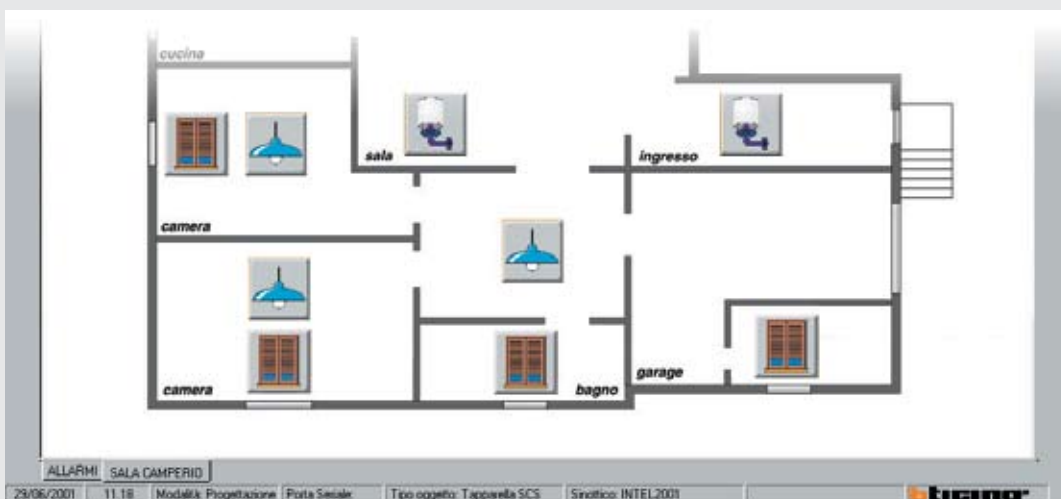
Visual SCS can in fact create a graphic representation of the system to be controlled in which the real devices are represented with the aid of pre-established icons which in any case can be personalised (e.g.: lamp, blinds, fan). The program can also check the state (ON or OFF) of the

users represented by the different icon colour at any time. The application supplied with the interface Item L4668 and with the Web Server can dialogue with the My Home systems in two ways:

- via the interface mentioned connected to the PC serial port and the system BUS;
- via an Ethernet card in the PC for access to one or more Web Servers.



Example of a synoptic panel to check an individual room



Example of a synoptic panel to check the home

■ VIRTUAL SWITCH

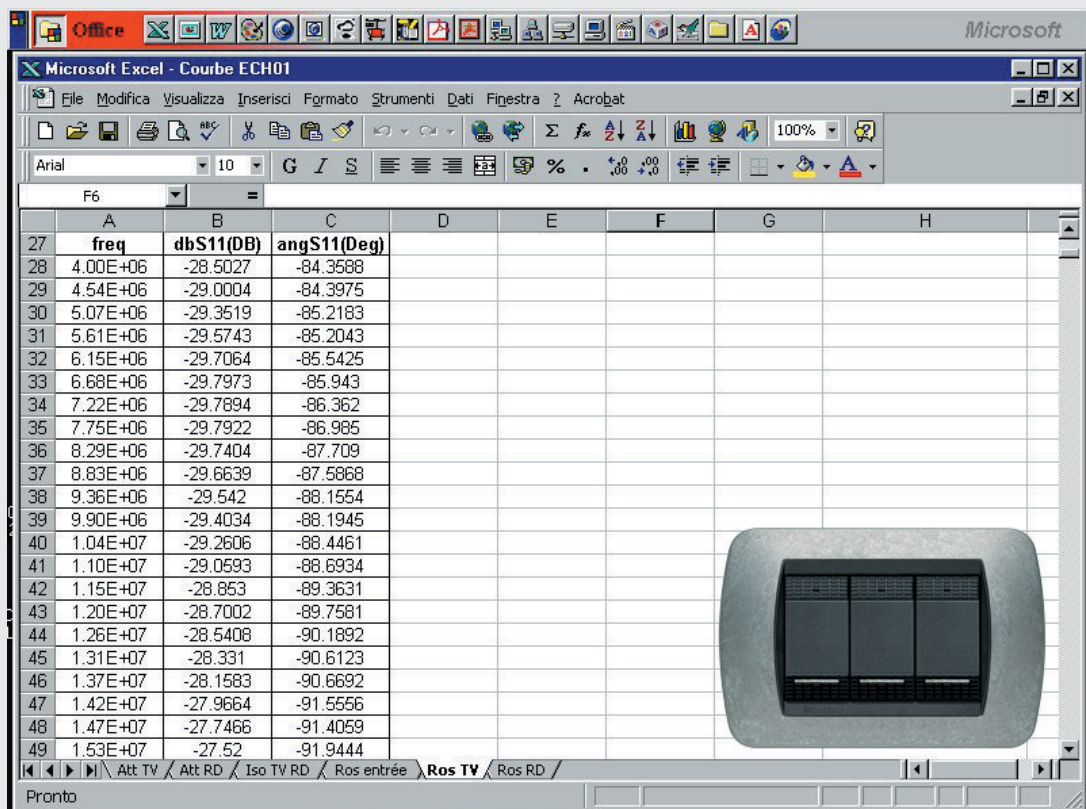
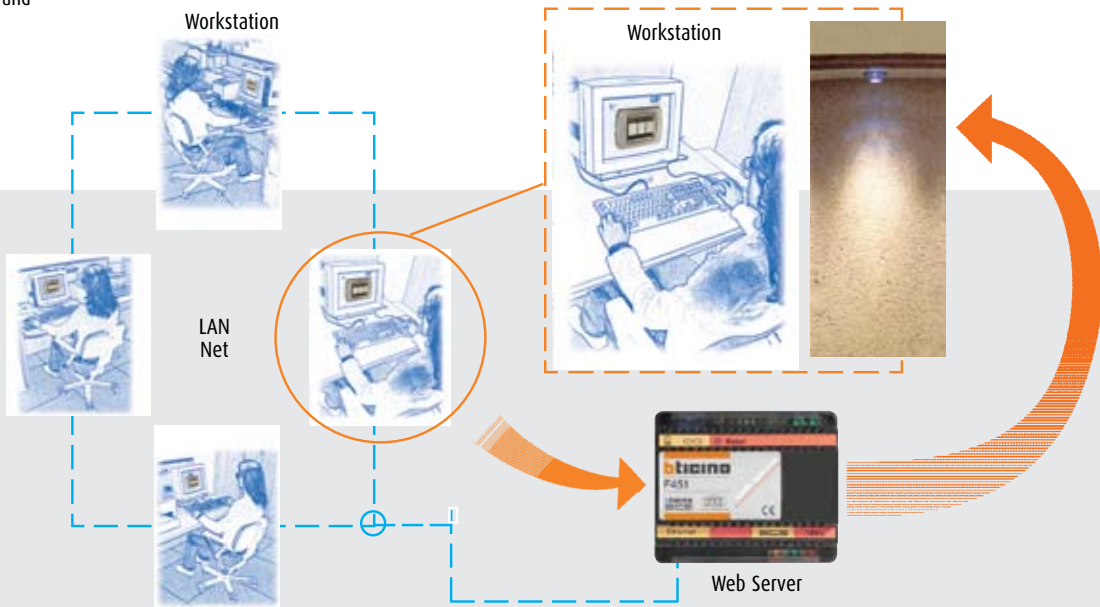
The Virtual Switch program is applied in public open-space surroundings and in large offices where the wall-mounted control points of the lighting and curtains cannot be easily reached from distant workstations.

The program can create on the PC monitor a user interface made up of a BTicino Living International

cover plate with three virtual switches which allow the personnel to interact with the My Home system without reaching the commands on the wall.

The commands are transmitted from the PC to the system to be managed via Ethernet by means of a Web Server device.

Example of a screen with virtual cover plate and commands



SYSTEM MANAGEMENT SOFTWARE

SCS ACTION

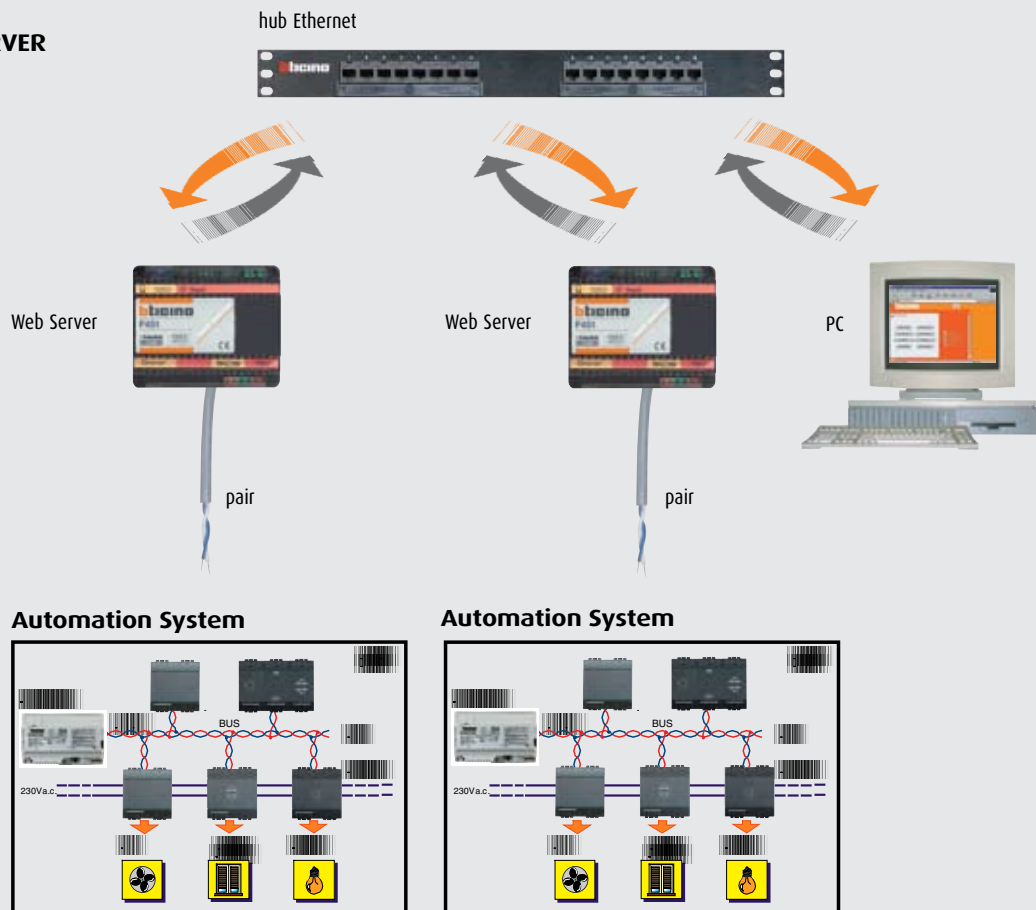
With a PC the program can create special commands called Scenarios (1) for the daily, weekly or yearly activation of Automation functions available in the My Home system. SCS Action is applied in the public sector and in surroundings where electrical devices must be operated on a calendar basis. An example of use is given by the need to control the switching on of devices, machine tools, industrial heating systems etc. automatically at pre-set times different from those of work, avoiding the use of many traditional timers. Each system to be controlled is connected to the remote PC via Web Server connected to the Ethernet.

This program allows several My Home systems connected via Web Server on an Ethernet network to interact. An event or a command given on a system can activate other scenarios created with the SCS Action application in other My Home systems. Because of its flexibility of use this program, like SCS Action, is applied in the public and hotel sectors for the management e.g. of several complex scenarios which cannot be achieved using just the scenario switchboard Item N4681. The scenarios can be activated at a pre-set time or following events generated by the same My Home system, such as activation of burglar-alarm detectors, technical alarms, devices connected to the interfaces etc.

Note (1)

The term Scenario means a particular situation in the surroundings defined ad hoc by the user and represented, e.g., by the operation of some lights, electrical devices, positions of blinds, etc., required to perform a particular activity or to create comfort in the home.

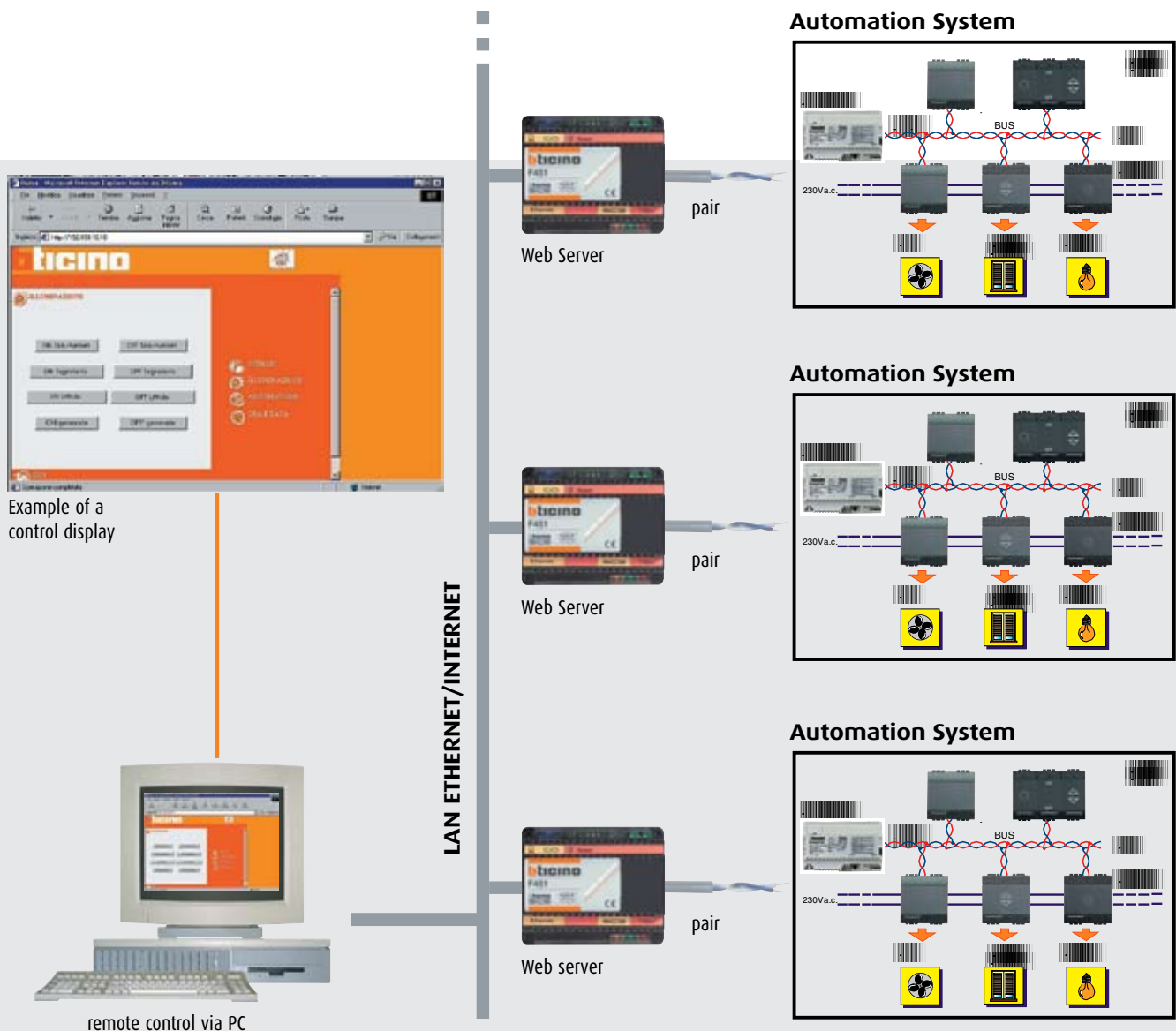
SCS ACTION SERVER



INTEGRATION IN THE SERVICE SECTOR

In the service sector, characterised by large areas, several My Home systems can be combined and managed by PC using the flexibility of the Ethernet network already present.

This allows the control and remote supervision of various systems, connected to the network by Web Server devices, from a remote PC situated, e.g., in the secretary's office.



Example of a control display

remote control via PC

MY HOME CONTROL

Command, control and monitoring devices



F461/2

TELEPHONE ACTUATOR

Item	Description
F461/2	telephone actuator with two-relays (C1 - C2 independent with exchange contract) -230V a.c. power supply - 3 DIN modules


 335818
335828

EXPANDABLE TELEPHONE SWITCHBOARDS

DIN modular housing

Item	No. of local lines	No. of extensions	No. of remote activ. relays	Dissipated power	No. of DIN modules
335818	1	8	1+(8)*	12W	10
335828	2+(2)*	8 +(8)*	1+(8)*	12W	10

* maximum expandability



4075N

TELEPHONE DIALLING DEVICE

Item	Description
4075N	communicator to connect to the telephone line which can automatically dial up to 16 telephone numbers + a "joker" forwarding 6 different alarm messages - allows two-way communication between user, burglar-alarm system and automation - surface-mounting installation - to be fitted with 6V 0.5Ah battery Item 3507/6 - P.T. ministry type approved

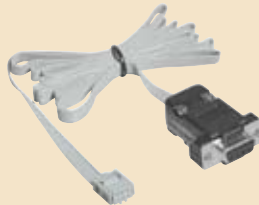
Command, control and monitoring devices



MHSERVER



F451
F451V



335919

WEB SERVER AND INTERFACE FOR PC

Item	Description
MHSERVER *	Web Server for the monitoring, command and local and remote control of My Home automation systems via Web pages which can be personalised or Virtual Switch software - video door entry answering machine function - can connect audio and video real time with the cameras - 230V a.c. power supply - installation in switchboard Item F105P/24D
F451	Web Server for the monitoring, command and local and remote control of My Home automation systems via Web pages which can be personalised or Virtual Switch software - 12V power supply with power supply Item 392100 - 6 DIN modules
F451V	Web Server as above - with web pages can receive and display pictures sent by the cameras - 27V power supply with power supply Item 346000 - 6 DIN modules
335919	interface to connect the Web Server Item F451 and Item F451V to the PC
* For the availability of this product, contact your BTicino sales agent.	