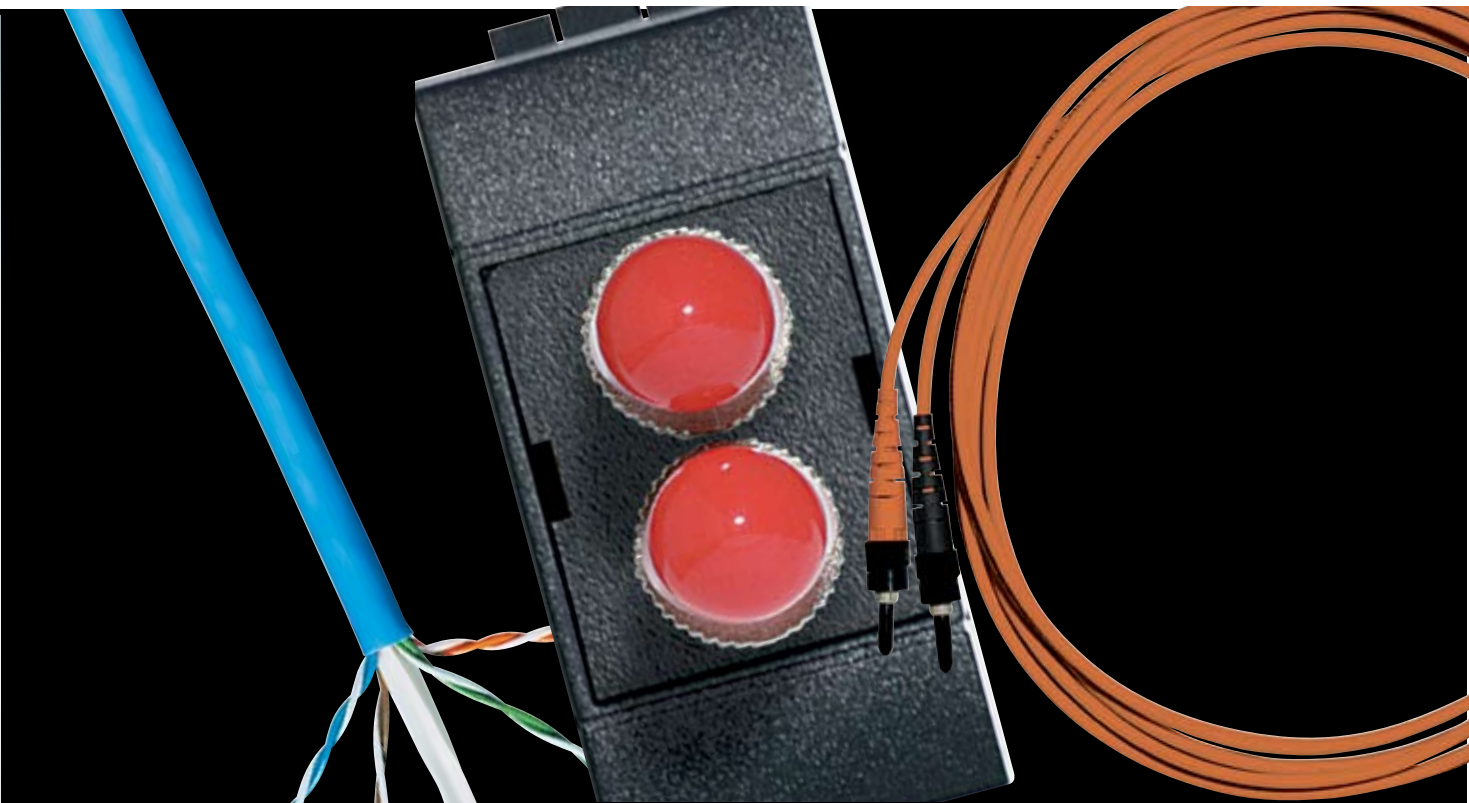


# BTNET

NEW PRODUCTS

MODULAR AND PRELOADED PATCH PANELS





## CONTENT



### 130 General characteristics

#### Catalogue

132 UTP and FTP cable

134 Patch panel and cord

135 Pop-up and floor box

136 Fiber optic

# Copper cabling solution

## 2 types of connection for maximum choice

BTNET offers a wide range of products to make copper wiring. It includes patch panels, patch cords, cables to make UTP and FTP vertical and horizontal cabling in cat. 5E and cat. 6 and solutions for workstations which fit into all the BTicino series.

BTicino proposes two types of copper cabling:  
**TOOLLESS** innovative cabling system which requires no tools (impact tools) to wire the cable.  
**110 IDC** cabling solution using impact tool to wire the cable.

The copper connection offered conforms perfectly to standard TIA/EIA568A/B and IEC EN 50173 in performance and quality.

### IDC TOOLLESS CONNECTION

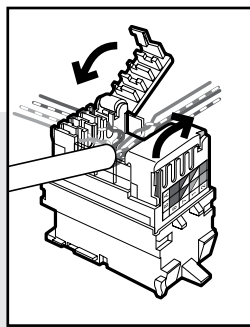
Cat. 5E  
 Cat. 6



UTP connector

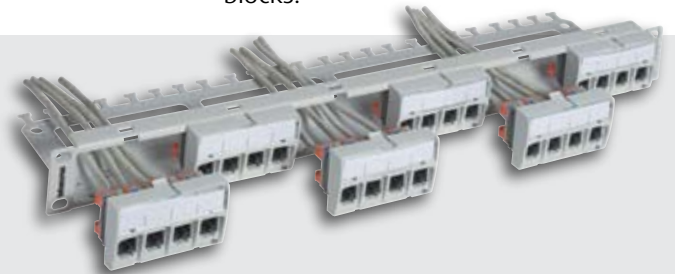


FTP connector



### MODULAR AND PRELOADED PATCH PANELS

The 24-port patch panels (light grey) can be used to make enclosures and cabinets with maximum simplicity thanks to the removable modular blocks.



### THE TOOLLESS CONNECTION SYSTEM

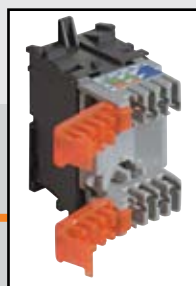
is made up of:

- Category 5E and 6 UTP and FTP connectors for workstations coordinated for all the BTicino series.
- Loose UTP and FTP connectors for modular panels and self-bearing cover plates.

- UTP and FTP preloaded and modular patch panels available in category 5E and 6 complete with: screws, nuts in cage and identification plates.
- Telephone panels with 48 cat. 3 RJ45 connectors.

### BTNET ENCLOSURES

features appearance and technical solutions which considerably improve all the aspects linked to the installation itself and to wiring the patch panels.



UTP and FTP connectors: the heart of the whole TOOLLESS system



Category 5E    Category 6

**CATEGORY 5E AND 6**  
 Easily recognisable thanks to the colour on the back of the connector: grey for cat. 5E connectors and black for cat. 6 connectors



**SHIELDING**  
 TOOLLESS FTP connectors have metal shielding on the back which differs depending on the type of use.



**EASY TO CONNECT**  
 Thanks to the modularity of the patch panels, the cables are wired simply and quickly

# BTNET fibre optic cabling solution

To make data transmission network which perform better in terms of speed, bandwidth and security against electromagnetic disturbances, BTNET offers a complete solution of passive fibre optic devices. The BTNET components for fibre optics are absolutely safe and easy to use. Their main features are:

## HIGH PERFORMANCE

Fibre optic components to use all the potential offered by this technology such as greater speed and greater available bandwidth

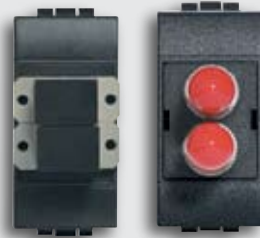
## MODULARITY OF SOLUTION

The fibre box can be easily fitted with accessories with the specific types of module required. The fibre optic product range

is made up for:

- ST and SC connectors for workstation
- modular fibre box for enclosures and cabinets
- SC-SC, ST-ST, ST-SC, MTRJ-SC and STRJ-ST fibre optic connectors with cold wiring kit

## EVERYTHING NEEDED TO MAKE A FIBRE OPTIC NETWORK



ST and SC connectors and ST, SC and MTRJ patch cords



Loose and tight fibre optic cables, from 4 to 12 fibre 50/125µm and 62.5/125µm

## CERTIFICATIONS AND CUSTOMER SERVICE

### THE STANDARDS

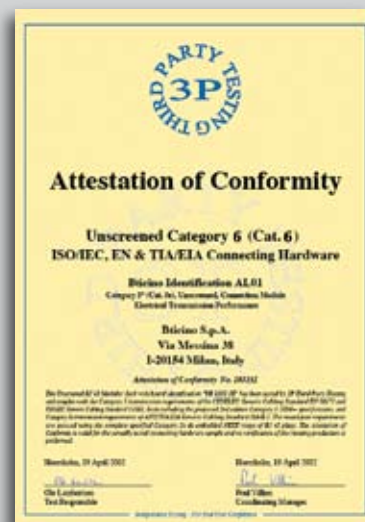
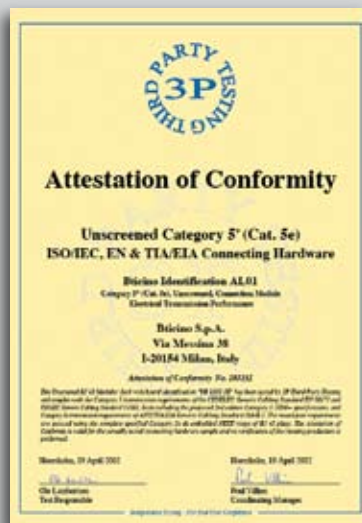
When making correct structured wiring the rules defined by the various standards

- TIA/EIA 568A/B: the first standard (American) which defines the making of structured wiring.
- ISO/IEC 11801: international standard.
- EN50173-1 (2003 Edition): European standard must be born in mind.

The following standards define the main and essential parameters for making wiring, which goes from the design of the system itself, its placement and how to test each link to the certification of the system which must be able to support the transmission speeds required.

## THE CERTIFICATIONS

BTicino has always been made by the quality and reliability of its products. All the BTNET products are tested in our Quality Laboratories and in the Test Room. As a further guarantee of the respect of standards, we also work with External 3P Certification Organisations.



## ระบบ LAN แบบ Toolless ของบิทีชีโน

ระบบเครือข่าย network ของบิทีชีโน มีชื่อเสียงในแถบยุโรปมากกว่า 10 ปี จึงได้มีการพัฒนาผลิตภัณฑ์โดยตลอด เพื่อเน้นความสะดวกในการติดตั้งได้อย่างรวดเร็ว โดยเฉพาะระบบ LAN ของบิทีชีโน ซึ่งเป็นอุปกรณ์แบบ toolless คือติดตั้งได้โดยไม่ต้องใช้เครื่องมือ เพื่อเป็นการประหยัดเวลา ง่ายต่อการติดตั้งและซ่อมบำรุง

ระบบ LAN ของบิทีชีโน มีคุณภาพโดยผ่าน มาตรฐาน ISO/IEC 11801, EN 50773-1, standard TIA/EIA 568A/B และ 3P Certificate (Third Party Testing)

หลายประเทศในยุโรปได้ใช้ อุปกรณ์ของบิทีชีโน ในส่วนของ โรงงาน รีสอร์ท คอนโดมีเนียม โรงพยาบาล อาคารสูงเอกชน รวมไปถึงงานราชการและ รัฐวิสาหกิจ อีกด้วย



## UTP and FTP cables category 5E and 6

C9881U/5E

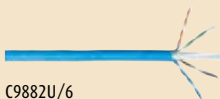


### UTP CABLE - CATEGORY 5E

Unshielded UTP cable in category 5E with solid copper 24 AWG (0.51 mm.) conductors, polyolefin insulation, 4 pairs of twisted conductors - low-flame-propagation PVC sheath - conformity to ISO/IEC 11801- grey

Item code	Sheath	Length	Packaging
<b>C9881U/5E</b>	PVC	305m	box
<b>C9882U/5E</b>	NH	305m	box

C9882U/6



### UTP CABLE - CATEGORY 6

Unshielded UTP cable in category 6 with solid copper 23 AWG (0.57 mm.) conductors, polyolefin insulation, 4 pairs of twisted conductors with internal separator - halogen-free sheath with low emission of fumes and toxic gas - conformity to ISO/IEC 11801- blue

Item code	Sheath	Length	Packaging
<b>C9881U/6</b>	PVC	305m	reels
<b>C9882U/6</b>	NH	305m	coil

C9881F/5E



### FTP CABLE - CATEGORY 5E

Shielded FTP cable in category 5E with solid copper 24 AWG (0.51 mm.) conductors total shielding with aluminium foil and tinned copper continuity wire - 4 pairs of twisted - conformity to ISO/IEC 11801- grey

Item code	Sheath	Length	Packaging
<b>C9881F/5E</b>	PVC	305m	box

C9882F/6



### FTP CABLE - CATEGORY 6

Shielded FTP cable in category 6 with solid copper 24 AWG (0.51 mm.) conductors total shielding with aluminium foil and tinned copper continuity wire - 4 pairs of twisted - conformity to ISO/IEC 11801- blue

Item code	Sheath	Length	Packaging
<b>C9882F/6</b>	NH	305m	coil



# Toolless IDC connection category 5E and 6 UTP unshielded



C9079/5E  
C9079/6



C9079/5S  
C9079/6S



C9802/TBA



C9804/TBA



C9500T/BA



M9079/5E  
M9079/6



L4279/5E  
L4279/6



N4279/5E  
N4279/6



NT4279/5E  
NT4279/6



M903/11P



M903/12P



M903/13P



M906/14P



M906/16P



E5S1WB



E5S2WB



E5S3WB

## RJ45 TOOLLESS IDC CONNECTORS FOR SELF-BEARING COVER PLATES

RJ45 connectors category 5E and 6 UTP and FTP type - insulation cutting connection without using tools - for UTP and FTP 22 - 24 AWG 4-pair 100Ω cable - conformity to standards TIA/EIA 568A/B and EN 50173 - connection T568A/B

Category 5E	Type
<b>C9079/5E</b>	UTP
<b>C9079/5S</b>	FTP
Category 6	
<b>C9079/6</b>	UTP
<b>C9079/6S</b>	FTP

## SELF-BEARING COVER PLATES FOR TOOLLESS RJ45 IDC CONNECTORS

4 and 2-place self-bearing cover plates to be completed with connectors and blank inserts suitable for installation on 503-type boxes - LIGHT white

Item code	Description
<b>C9802/TBA</b>	2-place cover plate
<b>C9804/TBA</b>	4-place cover plates

Blank insert for self-bearing cover plates

Item code	Description
<b>C9500T/BA</b>	white

## TOOLLESS RJ45 UTP CONNECTORS - CATEGORY 5E AND 6

RJ45 connectors - category 5E and 6 - connection with insulation cutter without using tools - for unshielded UTP 22 - 24 AWG 4-pair 100Ω cable - conformity to standards TIA/EIA T568A/B and EN50173 - complete with rating plate and anti-dust hatch - T568A/B

	Item code	Descriptions
<b>Category 5E</b>	<b>E4279C5E*</b>	MODUS PLUS
	<b>M9079/5E</b>	MAGIC ADVANCE
	<b>L4279/5E</b>	LIVING
	<b>N4279/5E</b>	LIGHT
	<b>NT4279/5E</b>	LIGHT TECH
<b>Category 6</b>	<b>E4279C6*</b>	MODUS PLUS
	<b>M9079/6</b>	MAGIC ADVANCE
	<b>L4279/6</b>	LIVING
	<b>N4279/6</b>	LIGHT
	<b>NT4279/6</b>	LIGHT TECH

\* เริ่มวางจำหน่ายในไตรมาสที่ 3 ของปี 2550

## PLASTIC COVER PLATES, WHITE COLOR

	Item code	Descriptions
<b>MAGIC ADVANCE</b>	<b>M903/11P</b>	ขนาด 1 ช่อง
	<b>M903/12P</b>	ขนาด 2 ช่อง
	<b>M903/13P</b>	ขนาด 3 ช่อง
	<b>M906/14P</b>	ขนาด 4 ช่อง
	<b>M906/16P</b>	ขนาด 6 ช่อง
<b>MODUS PLUS</b>	<b>E5S1WB</b>	ขนาด 1 ช่อง
	<b>E5S2WB</b>	ขนาด 2 ช่อง
	<b>E5S3WB</b>	ขนาด 3 ช่อง

# Patch panels and cords RJ connectors



C9024/5TA  
C9024/6TA



C9024/5STA  
C9024/6STA



C92..U/5E



C92..U/6



M9021M/4  
M9021M/6



L4258/12



L4258/12



NT4258/12



C9907



C9901



C9902



C9906

### UTP PRELOAD PATCH PANELS - CATEGORY 5E AND 6

Preloaded patch panels - category 5E and 6 - with RJ45 connector - insulation cutting connection without using tools - for unshielded UTP 22 - 24 AWG 4-pair 100Ω cable - conformity to standard TIA/EIA T568A/B and EN50173 - grey - complete with screws, nuts in cage and identification plates

Item code	Description	No. of ports	Rack units	Connection
<b>C9024/5TA</b>	cat. 5E	24	1	T568A/B
<b>C9024/6TA</b>	cat. 6	24	1	T568A/B

Preloaded patch panels - category 5E and 6 - with RJ45 connector - insulation cutting connection without using tools - for unshielded STP and FTP 22 - 24 AWG 4-pair 100Ω cable - conformity to standard TIA/EIA T568A/B and EN50173 - black - complete with screws, nuts in cage and identification plates

Item code	Description	No. of ports	Rack units	Connection
<b>C9024/5STA</b>	cat. 5E	24	1	T568A/B
<b>C9024/6STA</b>	cat. 6	24	1	T568A/B

### UTP PATCH CORD - CATEGORY 5E / 6

Patch cords with RJ45 connectors - UTP cable - PVC sheath - with incorporated SNAGGLE

Length (m)	Cat. 5E grey	Cat. 6 blue
1	<b>C9210U/5E</b>	<b>C9210U/6</b>
2	<b>C9220U/5E</b>	<b>C9220U/6</b>
3	<b>C9230U/5E</b>	<b>C9230U/6</b>
5	<b>C9250U/5E</b>	<b>C9250U/6</b>

Patch cords with RJ45 connectors - FTP cable

Length (m)	Cat. 5E grey	Cat. 6 blue
1	<b>C9215F/5E</b>	-
2	<b>C9220F/5E</b>	<b>C9220F/6</b>
3	<b>C9230F/5E</b>	<b>C9230F/6</b>
5	<b>C9250F/5E</b>	<b>C9250F/6</b>

### RJ11 AND RJ12 MODULAR TELEPHONE CONNECTORS

6-pin connectors for telephone connection  
110 cuttingconnection

Item code	Description
<b>M9021M/4</b>	RJ11, 2 pairs with terminal connection MAGIC ADVACNE
<b>M9021M/6</b>	RJ12, 3 pairs with terminal connection MAGIC ADVACNE
<b>L4258/12</b>	RJ12, 3 pairs, LIVING serie
<b>N4258/12</b>	RJ12, 3 pairs, LIGHT serie
<b>NT4258/12</b>	RJ12, 3 pairs, LIGHT TECH serie

### TOOLS FOR INSTALLATION

Item code	Descriptions
<b>C9907</b>	tool to wire the cable on 110 strip
<b>C9901</b>	tool to wire the twisted cable on 110 terminal board-complete with blade for cable connecting
<b>C9906</b>	pliers for wiring connectors RJ11, RJ12 and RJ45
<b>C9902</b>	tool to remove the twisted cable sheath and strip the pairs without notching the copper conductor - 5 cavities with different stripping diameters

# Pop-up and floor box Accessories



150627A



150627G



150560AC



1505600T



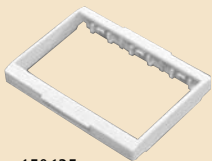
150560SB



150628A



150628G



150625



150620L

## POP-UP ACCESSORIES AND BOXES

Item code	Descriptions
150627A	aluminum Pop-Up without socket Living & Light
150627G	golden Pop-Up without socket Living & Light
150560AC	floor socket aluminum color - Living & Light
1505600T	floor socket gold color - Living & Light
150560SB	floor socket plastic floor box 100x100 mm - Living & Light
150628A	2P+T-16A socket MAGIC ADVANCE, aluminum color IPX4
150628G	2P+T-16A socket MAGIC ADVANCE, golden color IPX4
150625	Pop-Up adapter for MAGIC ADVANCE
150620L	zinc coated flush box 100x100x58 mm



150701



150702



150703



150704



150561S



150563S



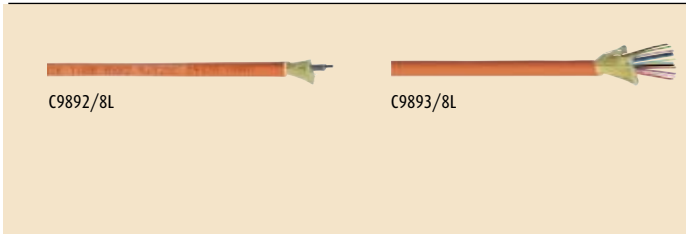
150712

## FLOOR BOX ACCESSORIES AND BOXES

Item code	Descriptions
150561	small box 185x270x93 mm can fit 10 socket-devices plain cover with black-plastic frame
150562	small box 185x270x93 mm can fit 10 socket-devices stainless-steel cover with black-plastic frame
150563	big box 305x270x93 mm can fit 20 socket-devices plain cover with black-plastic frame
150564	big box 305x270x93 mm can fit 20 socket-devices stainless-steel cover with black-plastic frame
150561S	metal-floor box for small box 202x279x97 mm
150563S	metal-floor box for big box 322x279x97 mm
150591	supporting frame

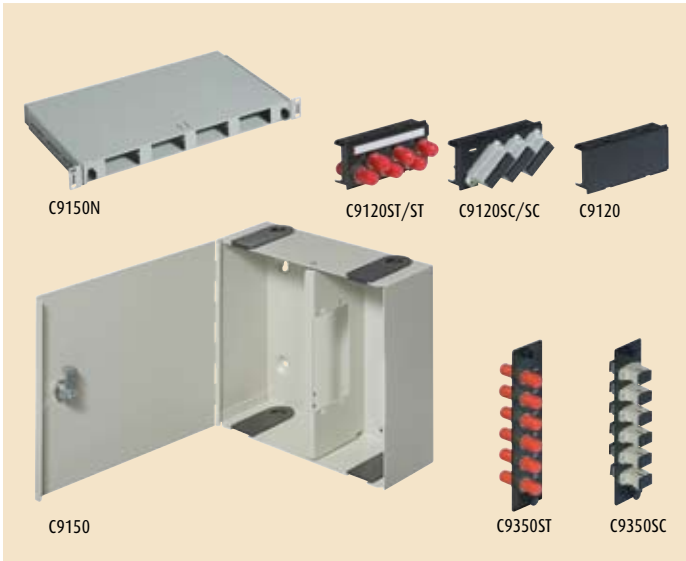


# Fiber optic cabling system



## LOOSE FIBRE OPTIC CABLE

Item code	No. of fibres	Length (m)	Size (mm)
<b>C9892/4L</b>	4	1000	62.5/125
<b>C9892/8L</b>	8	1000	62.5/125
<b>C9892/12L</b>	12	1000	62.5/125
<b>C9893/4L</b>	4	1000	50/125
<b>C9893/8L</b>	8	1000	50/125



## FIBRE BOX AND ACCESSORIES

Modular fibre box for making both SC and ST connections, depending on the modules chosen. Mixed installations can thus be made and the cabinet filled completely.

Item code	Descriptions
<b>C9150N</b>	patch cabinet set up to contain 24 F.O. ST or SC couplers - complete with clips to manage spare fibre - 1 rack unit

Coupling modules for fibre box

Item code	Descriptions
<b>C9120ST/ST</b>	F.O. ST.ST module for rack patch cabinet with 6 ST bushes
<b>C9120SC/SC</b>	F.O. SC.SC module for rack patch cabinet with 6 ST bushes
<b>C9120</b>	blank insert for fibre bloc item C9150N

Fibre box and surface-mounted modules

Item code	Descriptions
<b>C9150</b>	patch box set up to contain 6 F.O. ST or SC couplers
<b>C9350ST</b>	optic module preloaded with 6 SC-ST couplers per box
<b>C9350SC</b>	module as above with 6 SC-SC couplers

# Fiber optic cabling system



C9202MT/ST/N



C9202SC/ST/N  
C9202SC/ST

## FIBER OPTIC PATCH CORD ASSEMBLIS

### Multimode 50/125

Item code	Descriptions
<b>C9202SC/N</b>	patch cord with duplex SC-SC terminations - multimode fibre optic cable 50/125mm - grey - 2 metres long - LSZH sheath
<b>C9202ST/N</b>	patch cord with duplex ST-ST terminations - multimode fibre optic cable 50/125mm - grey - 2 metres long - LSZH sheath
<b>C9202SC/ST/N</b>	patch cord with duplex SC-ST terminations - multimode fibre optic cable 50/125mm - grey - 2 metres long - LSZH sheath
<b>C9202MT/ST/N</b>	patch cord with MTRJ terminations - ST duplex - multimode fibre optic cable 50/125mm - orange - 2m long - LSZH sheath
<b>C9202LC/ST/N</b>	patch cord with LC terminations - ST duplex - multimode fibre optic cable 50/125mm - orange - 2m long - LSZH sheath

### Multimode 62.5/125

Item code	Descriptions
<b>C9202SC</b>	patch cord with duplex SC-SC terminations - multimode fibre optic cable 62.5/125mm - grey - 2 metres long - LSZH sheath
<b>C9202ST</b>	patch cord with duplex ST-ST terminations - multimode fibre optic cable 62.5/125mm - grey - 2 metres long - LSZH sheath
<b>C9202SC/ST</b>	patch cord with duplex SC-ST terminations - multimode fibre optic cable 62.5/125mm - grey - 2 metres long - LSZH sheath
<b>C9202MT/ST</b>	patch cord with MTRJ terminations - ST duplex - multimode fibre optic cable 62.5/125mm - grey - 2m long - LSZH sheath
<b>C9202LC/ST</b>	patch cord with LC terminations - ST duplex - multimode fibre optic cable 62.5/125mm - grey - 2m long - LSZH sheath